

EMERSON MOTORS

Rescue Motors - Permanent Split Capacitor



5.6" Diameter



Features:

- Extended mounting studs
- 36" leads on blowers
- 48" leads on condenser fans
- Side shell holes for Rheem
- Reversible rotation

Condenser Fan Motors, 60 C Rated, Totally Enclosed Air Over

Mfg Part No	HP	RPM	Speed Tap	Volts	Bearings	Capacitor (mfd)	Amps
5464	1/3	825	High	208-230	Ball	10	1.9
5462	1/3	1075	High	208-230	Ball	7.5	2.6
5465	1/2	1075	High	208-230	Ball	12.5	1.9

Direct Drive Fan & Blower Motors, Open Dripproof

Mfg Part No	HP	RPM	Speed Tap	Heating	Volts	Bearings	Capacitor (mfd)	Amps
5460	1/2	1075	High	Med-Low	115	Slv	10	7.3
5461	1/2	1075	High	Med-Low	208-230	Slv	10	3.6
5470	3/4	1075	High	Med-Low	115	Ball	20	8.1
5471	3/4	1075	High	Med-Low	208-230	Ball	20	8.1

OEM Replacement for Specific Manufacturers



Tecumseh

Condenser Fan

1775

Replaces: F48DEF1775, TFM372, 810E037A84

Shaded pole, single speed, attaches by four machine screws shaft end, two 30" leads, sleeve bearings, CCWSE, 3/8" x 2 1/2" shaft with flat.

Mfg Part No	HP	RPM	Volts	Amps	Diameter (in)	Weight (lbs)
1775	1/20	1300/1500	230	1.1	5.0	7

1779

Replaces: F48HXDEJ1779, TFM502, 810E050A85

Shaded pole, single speed, sleeve bearings, mounting hubs both ends, four machine screws shaft end for attaching mounting plate, two 36" leads, CCWSE, 3/8" x 2 1/2" shaft.

Mfg Part No	HP	RPM	Volts	Amps	Diameter (in)	Weight (lbs)
1775	1/15	1300/1500	230	1.9	5.0	8

8330

Replaces: KA55HXKGD8330, TFM1862, 810E186A82

PSC, sleeve bearing, single speed, 3 lugs 120° apart, 5/16" mounting holes on a 7 1/4" diameter bolt circle, CWLE, capacitor mounted, open end bell shaft end, enclosed end bell lead end, horizontal mount, 1/2" x 2 1/8" shaft.

Mfg Part No	HP	RPM	Volts	Amps	Diameter (in)	Weight (lbs)
8330	1/4	1350/1625	230	1.9	5.6	12

8331

Replaces: KA55HXKGE8331, TFM1864, 810E186A83

Single speed, 3 lugs 120° apart, 5/16" mounting holes on a 7 1/4" dia. bolt circle, CWLE, capacitor mounted, open end bell shaft end, enclosed end bell lead end, thermally protected, horizontal mount, 1/2" x 2 1/8" shaft.

Mfg Part No	HP	RPM	Volts	Amps	Diameter (in)	Weight (lbs)
8331	1/4	1350/1625	280-420/460	0.80/0.95	5.6	12

EMERSON MOTORS

Albany, NY	518-489-0010	Rochester, NY	585-482-3876	Allentown, PA	610-437-9818	Scranton, PA	570-346-1565
Binghamton, NY	607-724-2451	Syracuse, NY	315-475-3131	Altoona, PA	814-941-7617	Stroudsburg, PA	570-424-5724
Buffalo, NY	716-853-1291	Utica, NY	315-732-4077	Erie, PA	814-459-4559	Wilkes-Barre, PA	570-824-8779
Middletown, NY	845-733-5666			Harrisburg, PA	717-558-0828	Williamsport, PA	570-323-4606

Condenser Fan - Permanent Split Capacitor



5.6" Diameter

Open Dripproof, Air Over



Features:

- High efficiency Economizer® rated (except as noted)
- 60 Hz
- Capacitor mounting holes in frame band
- Continuous duty, air over
- Water slinger
- Designed for use with 370V capacitors
- Automatic reset thermal overload protector
- Sleeve bearings have all angle thrust system
- Green ground lead
- Reversible rotation
- Class B insulation
- Extended studs are 8-32 UNC thread unless otherwise noted
- 30" leads
- Double flats on shaft
- Enclosed end shield at shaft end

Stud Mount, Shaft Up or Horizontal, Without Capacitor

Mfg Part No	HP	RPM	Volts	Bearings	Capacitor (mfd)	Amps
8661	1/6	1075	208-230	Slv	3.0	1.3
3851	1/4	1075	208-230	Slv	5.0	1.7
6880	1/3	1075	208-230	Slv	5.0	2.2
3852	1/2	1075	208-230	Slv	7.5	3.1
3097	3/4	1075	208-230	Slv	10.0	4.8

Totally Enclosed, Air Over



Features:

- 60° C ambient design
- Sleeve bearings have all angle thrust system
- Class B insulation
- Designed for use with 370V capacitors
- Extended studs
- 30" leads
- Hubless lead end
- Drain holes both ends
- Reversible rotation
- Automatic reset thermal overload protector
- Continuous duty

Stud Mount, Without Capacitor, High Ambient Design, All Angle Mount

Mfg Part No	HP	RPM	Volts	Bearings	Capacitor (mfd)	Amps
1873	1/6	825	208-230	Slv	5.0	1.0
1859	1/6	1075	208-230	Slv	5.0	1.0
1874	1/4	825	208-230	Slv	5.0	2.0
1860	1/4	1075	208-230	Slv	5.0	1.7
1875	1/3	825	208-230	Slv	5.0	2.4
1861	1/3	1075	208-230	Slv	7.5	2.1
1862	1/2	1075	208-230	Slv	10.0	3.0
1868	3/4	1075	208-230	Slv	10.0	4.5

EMERSON MOTORS

Commercial Condenser Fan - Permanent Split Capacitor

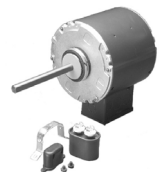


Open Dripproof & Totally Enclosed, Air Over

Features:

- Capacitor and outlet box included, unless noted
- Reversible rotation
- Double-sealed ball bearing
- Continuous duty, air over
- 40° C ambient
- Dual voltage
- Class B insulation
- Automatic reset thermal overload protector

5.6" Diameter All Angle Mounting



Mfg Part No	HP	RPM	Volts	Bearings	Capacitor (mfd)	Amps
7475	1/2	1075	208-230/460	Ball	10.0	2.8/1.4
2201	1/2	1075	208-230/460	Ball	10.0	3.2/1.6
2202	3/4	1075	208-230/460	Ball	12.5	4.6/2.3



EMERSON MOTORS

Commercial Condenser Fan - Permanent Split Capacitor



Open Dripproof & Totally Enclosed, Air Over

6.3" Diameter All Angle Mounting



Mfg Part No	HP	RPM	Volts	Bearings	Capacitor (mfd)	Amps
3568	1/2	825	208-230	Ball	10.0	3.6
3567	3/4	825	208-230	Ball	17.5	5.3
2203	1	1075	208-230/460	Ball	17.5	5.2/2.6
2204	1-1/2	1075	208-230/460	Ball	20.0	7.6/3.8

Double Shaft Fan & Blower - Permanent Split Capacitor



Open Dripproof, Air Over

5.6" Diameter Hub or Stud Mount, without Capacitor & Mounting Kit



Features:

- overload protector
- CCW rotation lead end
- Sleeve bearings have all angle thrust system
- Continuous duty, air over
- Green ground lead
- Connection & capacitor information furnished on nameplate
- Three speed
- Designed for use with 370V capacitors
- Mounting holes in shell for mounting capacitor
- When supplied, capacitor and mounting hardware are supplied detached
- Hub rings are 2 1/4" diameter, furnished detached, with extra metal outer rings for adapting to 2 1/2" diameter
- 20" leads
- Class B insulation

Mfg Part No	HP	RPM/Speeds	Volts	Bearings	Capacitor (mfd)	Amps
3134	1/4	1075/3	230	Slv	5.0	1.9
3135	1/3	1075/3	230	Slv	5.0	2.5
3136	1/2	1075/3	230	Slv	5.0	4.5

Direct Drive Fan & Blower - Permanent Split Capacitor



Open, Air Over

5.6" Diameter Hub Ring Mount (2.5"), except as noted



Features:

- Stud extensions on popular models
- Designed for use with 370V capacitors
- Class A insulation
- 24" leads
- High efficiency Economizer®
- Continuous duty, air over
- Sleeve bearings have all angle thrust system
- Reversible rotation
- Automatic reset thermal overload protector
- Connection and capacitor information furnished in the nameplate data
- 2.5" dia. hub rings included

Mfg Part No	HP	RPM/Speeds	Volts	Stack	Capacitor (mfd)	Amps	Notes
1863	1/4	1075/3	115	1.25	5.0	3.9	Not Economizer
1971	1/4	1075/3	208-230	1.25	5.0	1.8	Not Economizer
1864	1/3	1075/3	115	1.50	7.5	5.0	Not Economizer
1972	1/3	1075/3	208-230	1.50	5.0	2.4	Not Economizer
1865	1/2	1075/3	115	2.50	10.0	7.4	Not Economizer
1973	1/2	1075/3	208-230	2.50	7.5	3.3	Not Economizer
8904	3/4	1075/3	115	2.50	15.0	9.1	Not Economizer, No Stud Ext
8905	3/4	1075/3	208-230	2.50	10.0	4.6	Not Economizer, No Stud Ext

EMERSON MOTORS

Albany, NY	518-489-0010	Rochester, NY	585-482-3876	Allentown, PA	610-437-9818	Scranton, PA	570-346-1565
Binghamton, NY	607-724-2451	Syracuse, NY	315-475-3131	Altoona, PA	814-941-7617	Stroudsburg, PA	570-424-5724
Buffalo, NY	716-853-1291	Utica, NY	315-732-4077	Erie, PA	814-459-4559	Wilkes-Barre, PA	570-824-8779
Middletown, NY	845-733-5666			Harrisburg, PA	717-558-0828	Williamsport, PA	570-323-4606