

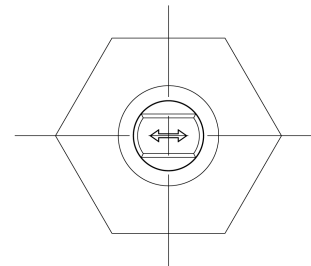
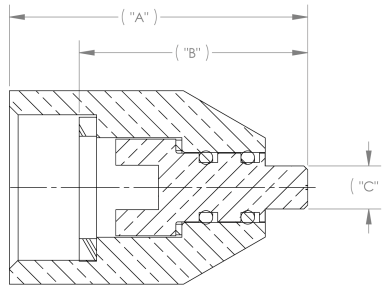
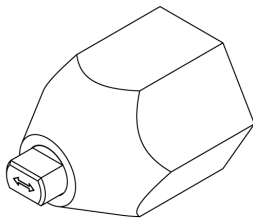


Retrofit Cap Assembly

Designed for use in refrigerant retrofit applications.

Look for these Mueller advantages:

- Replacement cap that does not require loosening before driving the valve.
- Quick turn cap provides visual identification of stem position and enhances servicability in tight spaces.
- Removable center piece is required to be in place for operation
- Dual O-ring seal in stem area, and a seal at the bottom of the cap



Retrofit Cap Assembly Specifications

Part Number	Straight Thru Ball Valve Sizes	3-Way Ball Valve Sizes	A	B	C	Sealing Torque
A 18351	1/4" - 5/8"	1/4" - 5/8"	1.31	1.02	0.16	5-6 FT LBS.
A 18352	3/4" - 7/8"	3/4" - 7/8"	1.54	1.118	0.22	5-6 FT LBS.
A 18353	1 1/8" - 1 3/8"	1 1/8"	1.95	1.59	0.31	13-15 FT LBS.
A 18354	1 5/8" - 2 1/8" 2 5/8" & 3 1/8" Reduced Port	1 3/8" - 2 1/8" 2 5/8" & 3 1/8" Reduced Port	2.57	1.97	0.38	16-18 FT LBS.
A 18355	2 5/8" & 3 1/8" Full Port	2 1/8" - 3 1/8" *	2.66	2.10	0.38	30-35 FT LBS.

* For use with 3-Way Ball Valves manufactured prior to November 2006.