

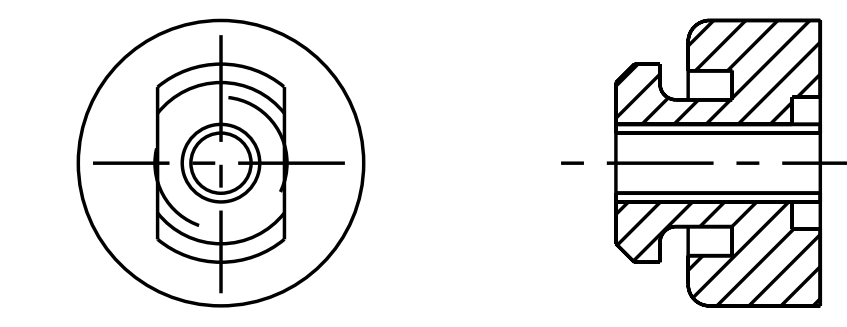
PART NO.	MODEL NUMBER	A ±3.0	B ±3.0	E	F	G	H	J	L±3.0	V±3.0	SHEETS	
497-3543-00	ZF13K4 / K4E ZF15K4 / K4E ZF18K4 / K4E	442.0 [17.40]	408.4 [16.07]	79.5 [3.13]	340.9 [13.42]	47.5 [1.87]	25.6 [1.01]	120.2 [4.73]	469.8 [18.50]	OMIT	1, 2, 3	26
497-3543-01	ZS30K4 / K4E ZS38K4 / K4E ZS45K4 / K4E	437.7 [17.23]	409.6 [16.13]	79.5 [3.13]	OMIT	47.5 [1.87]	OMIT	OMIT	OMIT	OMIT	1, 2	26
497-3543-02	ZB30KC / KCE ZB38KC / KCE ZB42KC / KCE ZB45KC / KCE	437.7 [17.23]	409.6 [16.13]	79.5 [3.13]	OMIT	47.5 [1.87]	OMIT	OMIT	OMIT	OMIT	1, 2	26
497-3543-03	ZX30KC-TFD ZX38KC-TFD ZX45KC-TFD	442.0 [17.40]	408.4 [16.07]	OMIT	OMIT	OMIT	OMIT	OMIT	OMIT	OMIT	1, 2	26 30
497-3543-05	ZF13KVE ZF18KVE	442.0 [17.40]	408.4 [16.07]	79.5 [3.13]	340.9 [13.42]	47.5 [1.87]	24.7 [0.97]	116.0 [4.57]	OMIT	451.4 [17.77]	1, 2, 4	26
497-3543-07	ZF18K4E-***-524 ZF15K4E-***-524	442.0 [17.40]	408.4 [16.07]	OMIT	340.9 [13.42]	OMIT	25.6 [1.01]	120.2 [4.73]	469.8 [18.50]	OMIT	1, 2, 3	26 32
497-3543-08	ZS30K4E-***-426 ZS38K4E-***-426 ZS45K4E-***-426	437.7 [17.23]	409.6 [16.13]	79.5 [3.13]	OMIT	OMIT	OMIT	OMIT	OMIT	OMIT	1, 2	26
497-3543-11	ZB30KQ/KQE ZB38KQ/KQE ZB45KQ/KQE	437.7 [17.24]	409.6 [16.13]	OMIT	OMIT	OMIT	OMIT	OMIT	OMIT	OMIT	1, 2	26 30
497-3543-12	ZB48KQ / KQE	443.4 [17.46]	413.7 [16.30]	OMIT	OMIT	OMIT	OMIT	OMIT	OMIT	OMIT	1, 2	26 30
497-3543-13	ZS30K4*-***-524 ZS38K4*-***-524 ZS45K4*-***-524	437.7 [17.23]	409.6 [16.13]	OMIT	OMIT	OMIT	OMIT	OMIT	OMIT	OMIT	1, 2	26 30
497-3543-14	ZX30KC/KCE-PFV/TF5 ZX38KC/KCE-TF5 ZX45KC/KCE-TF5 ZX38KC/KCE-PFV	437.7 [17.24]	409.6 [16.13]	OMIT	OMIT	OMIT	OMIT	OMIT	OMIT	OMIT	1, 2	26 27 30
497-3543-15	ZB48KQ/KQE-***-558	443.4 [17.46]	413.7 [16.30]	79.5 [3.13]	OMIT	OMIT	OMIT	OMIT	OMIT	OMIT	1, 5	26 30
497-3543-16	ZB30KQ/KQE-***-558 ZB38KQ/KQE-***-558 ZB45KQ/KQE-***-558	437.7 [17.24]	409.6 [16.13]	79.5 [3.13]	OMIT	OMIT	OMIT	OMIT	OMIT	OMIT	1, 5	26 30
497-3543-17	ZF18K4E-***-234	442.0 [17.40]	408.4 [16.07]	79.5 [3.13]	340.9 [13.42]	47.5 [1.87]	25.6 [1.01]	120.2 [4.73]	469.8 [18.50]	OMIT	1, 2, 5	34

SPECIFICATIONS	
ES NO.	DESCRIPTION
ES92-155	CONVERSION-METRIC

NOTES:

- 1. ALL TOLERANCES ±1.50 [0.060] UNLESS OTHERWISE SPECIFIED.
- 2. DUE TO ACCUMULATED ASSEMBLY TOLERANCES THE LISTED COMPONENTS MAY VARY FROM THE MOUNTING HOLES AS SHOWN BELOW:  
SUCTION FITTING : ±3.0 [0.12]  
DISCHARGE FITTING: ±3.0 [0.12]
- 3. TUBE ENDS MUST BE PLUGGED.
- 4. TORQUE T-BLOCK SCREWS TO 2.4-2.6 Nm [21-23 IN LBS].
- 5. INJECTION FITTING & THERMOSTAT TUBE OMITTED.
- 6. FOR MORE INFORMATION SEE PRODUCT CATALOG.
- 7. FULL HEIGHT OF COMPRESSOR DOES NOT INCLUDE MOUNTING SPACERS.
- 8. MOUNTING KIT:

GROMMET DUROMETER	4 FOOT KIT
35-45	527-0116-00



**COMPRESSOR WIRING DIAGRAM**

USE COPPER CONDUCTORS ONLY. USE MINIMUM 75°C WIRE FOR AMPACITY DETERMINATION. INTERNAL MOTOR PROTECTION - ALLOW TIME FOR RESET. OVERCURRENT PROTECTION DEVICE RATING AND TYPE MUST BE IN ACCORDANCE WITH REGULATORY AGENCY END PRODUCT APPROVALS-SEE SYSTEM NAMEPLATE. CRANKCASE HEATER, WHEN APPLIED, MUST BE CONNECTED ONLY TO ITS RATED VOLTAGE. TO CORRECT IMPROPER ROTATION OF THREE PHASE MODELS, SWITCH ANY TWO SUPPLY LINES. REFER TO THE APPLICABLE SYSTEM WIRING DIAGRAM.

005-1213-00

8-06

ECN	NO.	REV.	DESCRIPTION	DATE	BY	CHKD	APPR
ECN006587	35		SEE SHEET 2	02-25-13	RRP	MA	KJR
ECN005010	34		RELEASED -17	01-17-12	MPC	DC	NB
ECN003330	33		OBSOLETE -13	12-19-11	PJD	DC	DC
ECN003377	32		ADDED ZF15K4E-***-524 TO -07	02-01-11	PJD	DC	BR
ECN002981	31		REMOVED SHEET 5, CORRECTED WIRING DIAGRAM	10-13-10	PJD	DC	BH
ECN001809	30		OBSOLETE -03, -11, -12, -14 TO -16	06-25-09	FY	LZC	SX
ECN001210	29		PICTORIALLY UPDATE FOR OIL FITTING	03-30-09	VDJ	DC	BH
ECN001060	28		RELEASED -15/-16	09-4-08	CW	MY	BL
ECN000609	27		ADD MODEL NUMBER IN CHART	03-28-08	HWW	DC	DC
ECN000609	26		RELEASED-148 CHANGED FITTING VALVE	08-14-07	AG	DC	BL
ECN000150	25		RELEASED -13;OBSOLETE -06,-10	06-15-07	PMM	DC	JTP
32-1198-023	0		RELEASED	01-11-99	AJADAN		



INTERPRET PER ASME Y14.5M-1994 AND EMERSON CLIMATE TECHNOLOGIES, INC. DESIGN STANDARDS DS2002 DO NOT SCALE DRAWING

THIRD ANGLE PROJECTION

CRITICAL PRODUCT CHARACTERISTIC

UNLESS OTHERWISE SPECIFIED DIMENSIONS ARE MILLIMETER OR (INCH)

TOLERANCES:  
1-PLACE ± 0.4  
2-PLACE ± 0.15  
ANGULAR ± 0.5°

THIS DRAWING AND INFORMATION CONTAINED HEREIN ARE THE EXCLUSIVE PROPERTY OF EMERSON CLIMATE TECHNOLOGIES, INC. AND SHALL BE RETURNED UPON DEMAND AND SHALL NOT BE REPRODUCED IN WHOLE OR IN PART, DISCLOSED TO ANYONE ELSE OR USED, WITHOUT THE WRITTEN CONSENT OF EMERSON CLIMATE TECHNOLOGIES, INC.

MATERIAL SPECIFICATION: N/A

DATE: 08-17-07

SCALE: 1:1

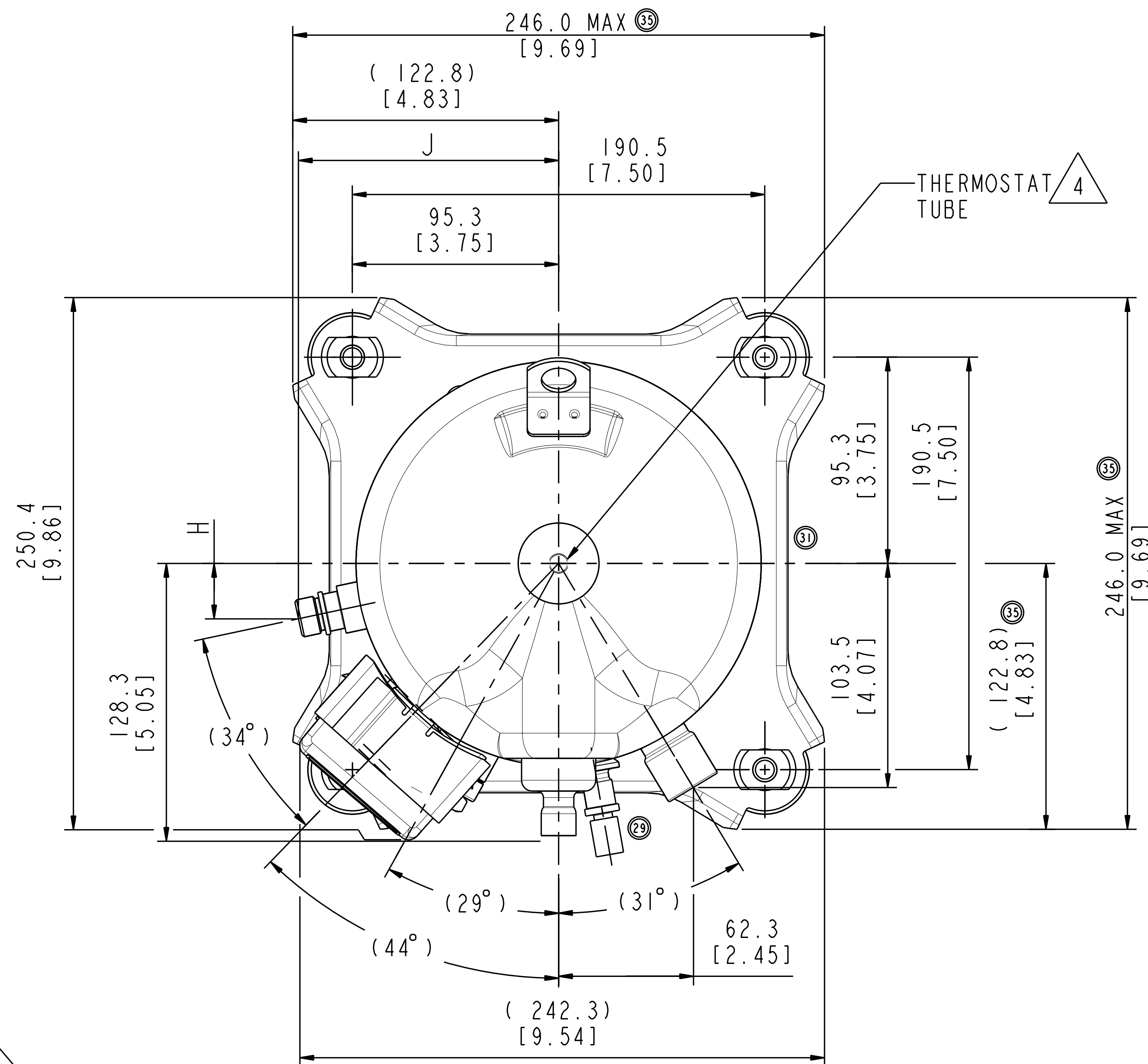
DATE FORMAT: MM-DD-YY

TITLE: REF DWG-WELD COMP ASSM

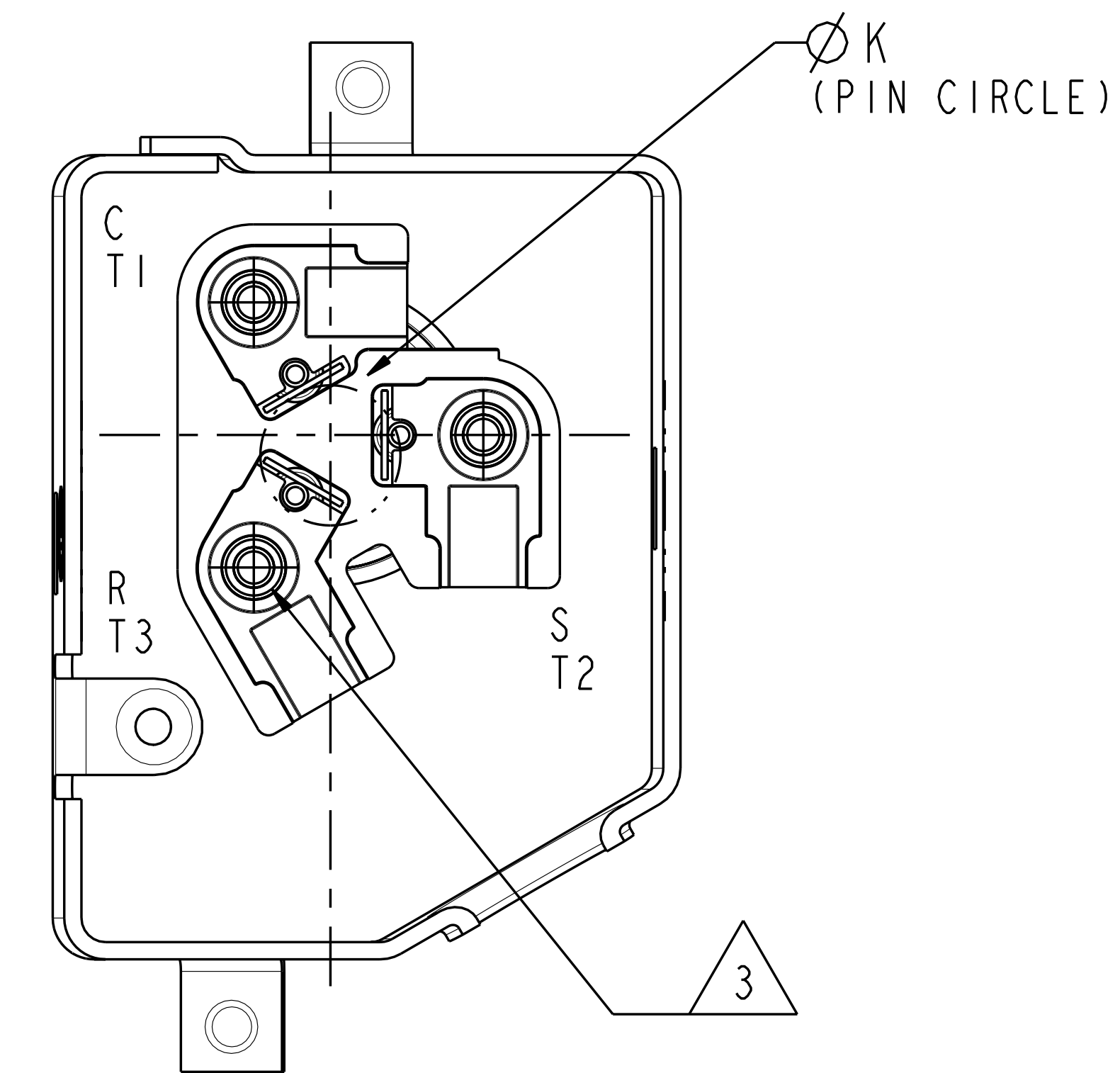
DRAWING NUMBER: 497-3543-00

SHEET 1 OF 5

SIZE: 5



MOTOR TYPE	Ø K PIN CIRCLE
PFJ PFV TF5	13.46 [0.530]
TFD TFE TF7	17.45 [0.687]

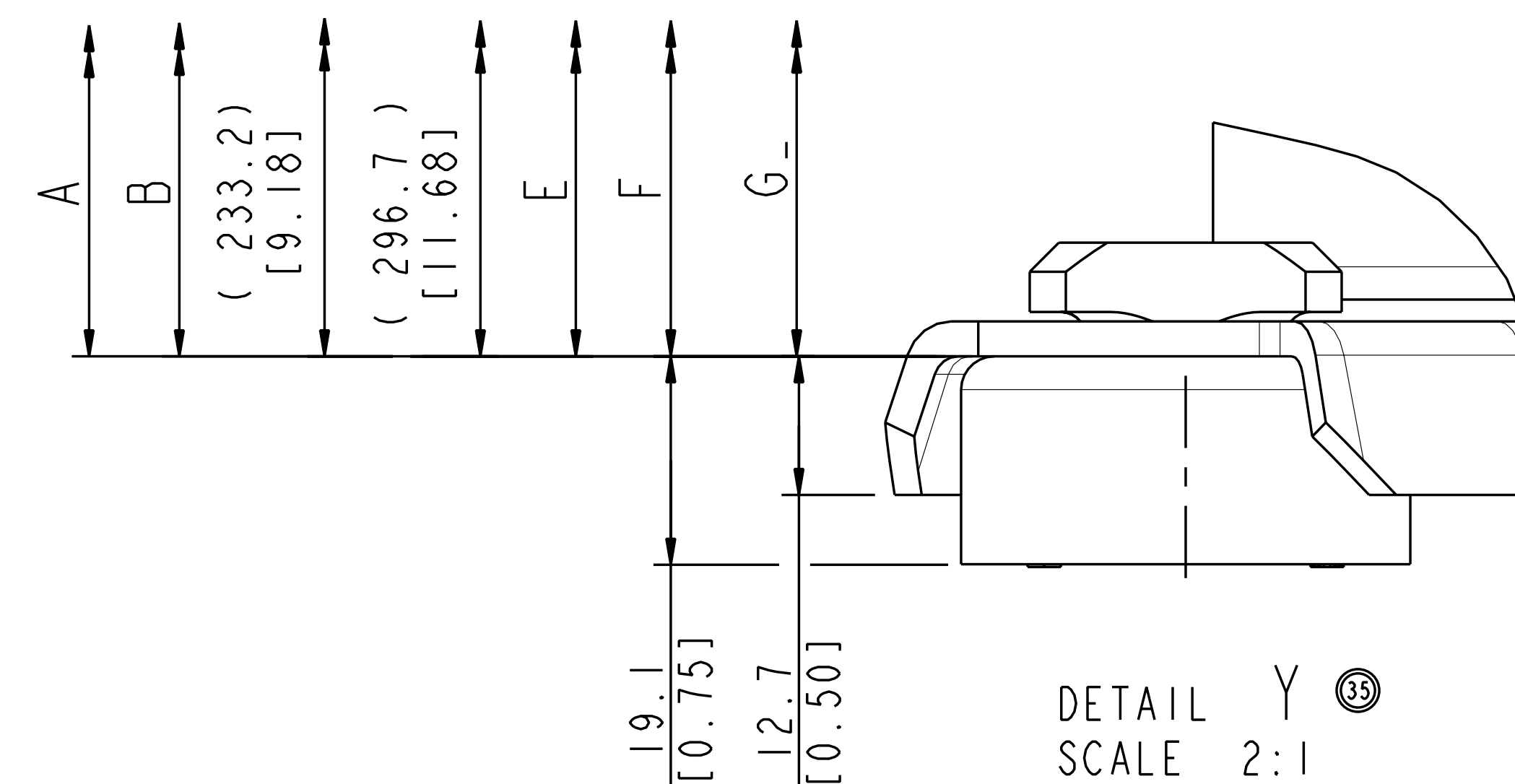
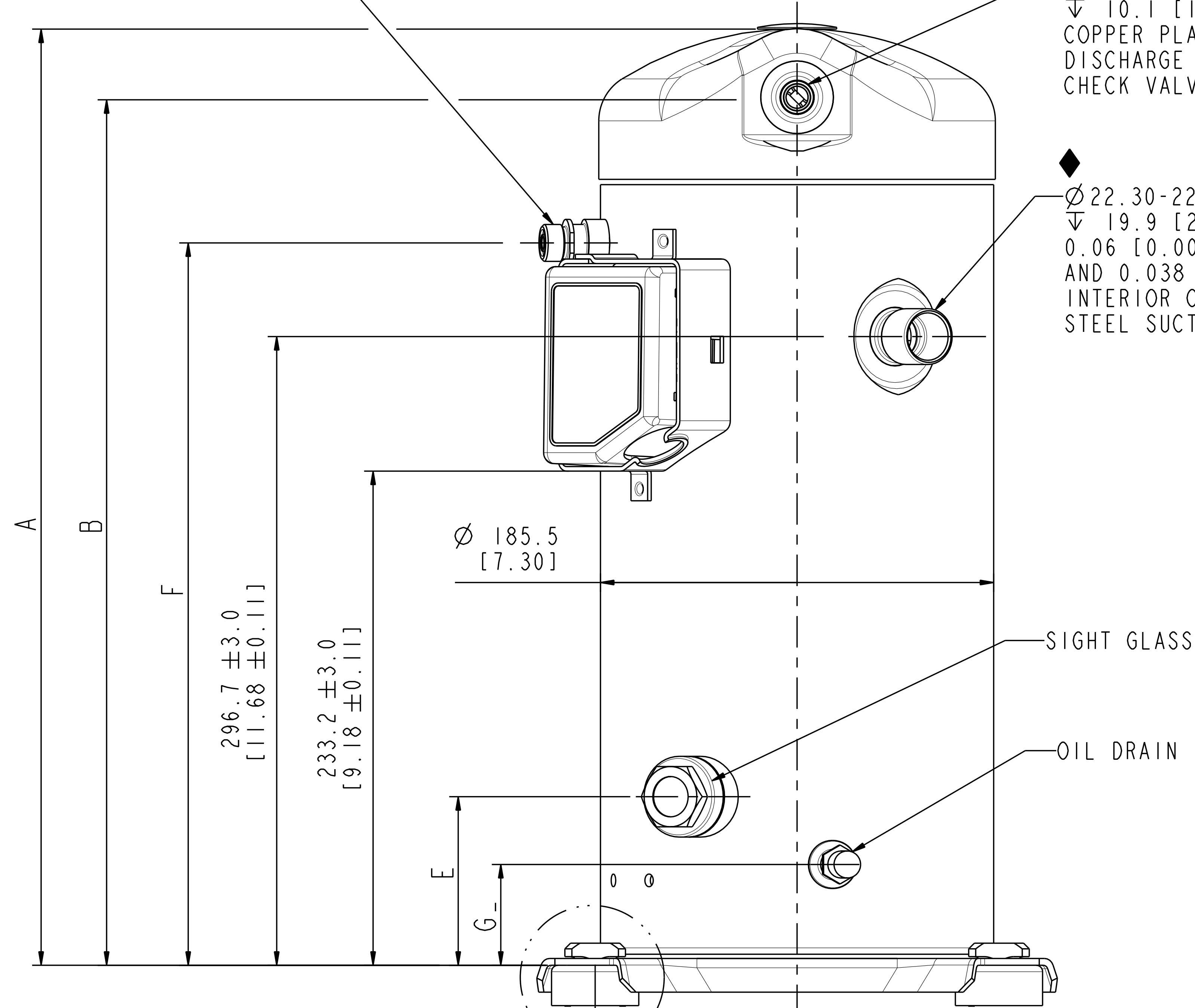


SCALE 3:2

4 LIQUID INJECTION FITTING  
[11/16-16 UN-2A THREADS]  
[0.25 ID]  
PER BILL OF MATERIAL  
(SEE SHEET 4 FOR VAPOR  
INJECTION FITTING OPTIONS)

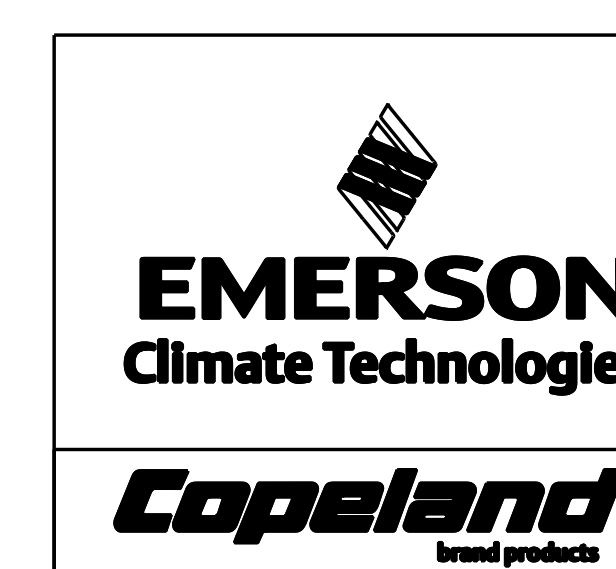
Ø 12.78-12.90 [0.503-0.508] I.D. 35  
▽ 10.1 [13/32] MIN.  
COPPER PLATED STEEL  
DISCHARGE FITTING/  
CHECK VALVE 26

Ø 22.30-22.43 [0.878-0.883] I.D. 35  
▽ 19.9 [25/32] MIN.  
0.06 [0.002] MIN THICK EXTERIOR  
AND 0.038 [0.0015] MIN THICK  
INTERIOR COPPER PLATED  
STEEL SUCTION FITTING



DETAIL Y 35  
SCALE 2:1

35 SEE DETAIL Y



INTERPRET PER ASME  
Y14.5M-1994 AND  
EMERSON CLIMATE  
TECHNOLOGIES, INC.  
DESIGN STANDARDS DS2002  
DO NOT SCALE DRAWING

THIRD ANGLE  
PROJECTION

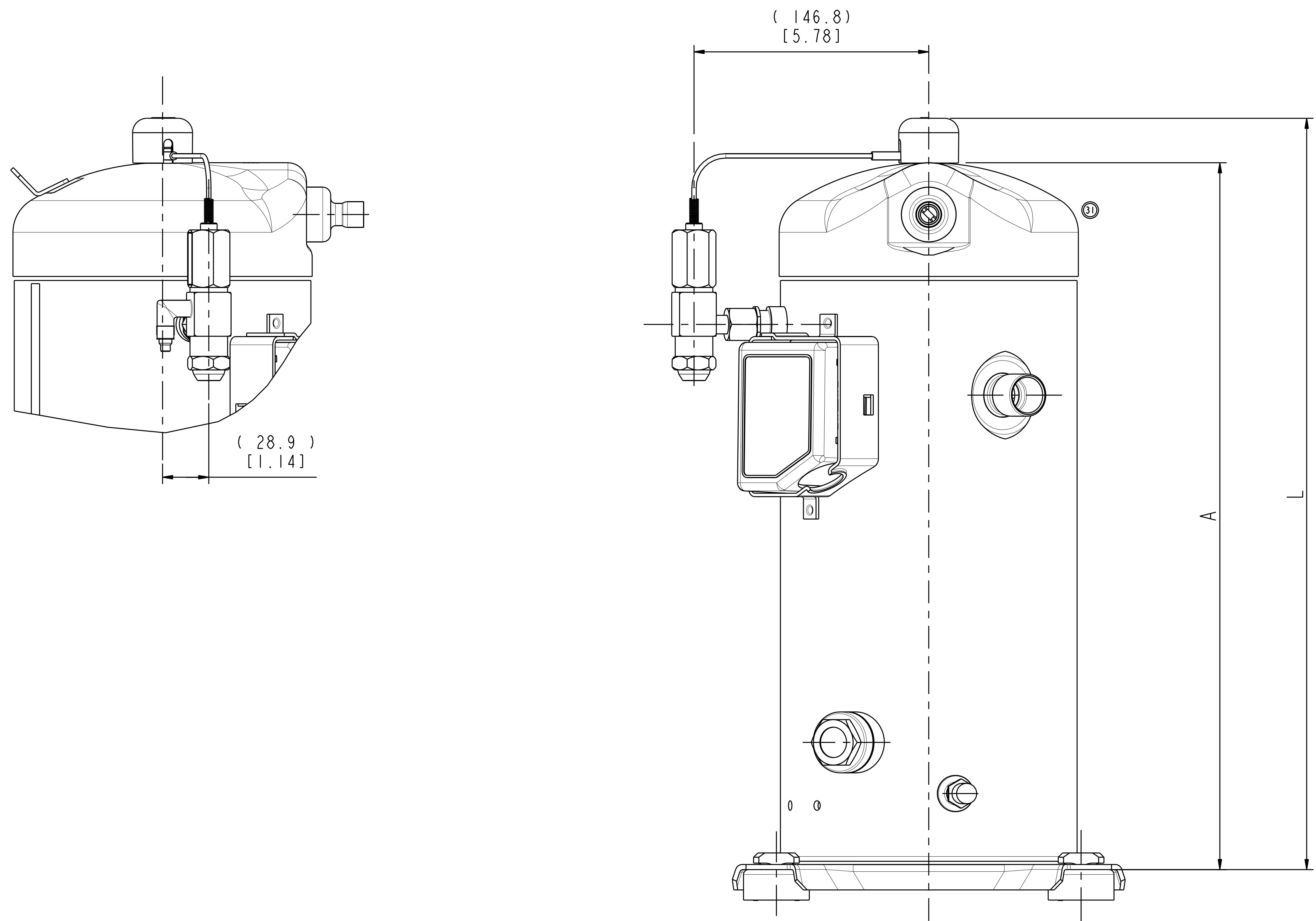
CRITICAL PRODUCT  
CHARACTERISTIC

UNLESS OTHERWISE SPECIFIED  
DIMENSIONS ARE MILLIMETER OR (INCH)

TOLERANCES:  
1-PLACE ±  
2-PLACE ±  
ANGULAR ±

ENG NOTICE NO.	REV. NO.	REVISIONS	DATE	BY	CHKD	APPR
ECN006587	35	CHANGED DIMENSIONS	02-25-13	RRP	MA	KJR
ECN005010	34	SEE SHEET I	01-17-12	MPC	DC	NB
ECN003330	33	SEE SHEET I	12-19-11	PJD	DC	DC
ECN003377	32	SEE SHEET I	02-01-11	PJD	DC	BR
ECN002981	31	UPDATE COVER-TOP	10-13-10	PJD	DC	BH
ECN001809	30	SEE SHEET I & 5	06-25-09	FY	LZC	SX
ECN001210	29	SEE SHEET I	03-30-09	VDJ	DC	BH
ECN001060	28	SEE SHEET I	09-04-08	CW	MY	BL
ECN000609	27	ADD MODEL NUMBER IN CHART	03-28-08	HWW	DC	DC
ECN000609	26	RELEASED-I48 CHANGED FITTING VALVE	08-14-07	AG	DC	BL
ECN000150	25	REDRAWN, SEE SHEET I	06-15-07	PMM	DC	JTP
32-1198-023	0	RELEASED	01-11-99	AJA	DAN	

CONFIDENTIALITY NOTICE		SUPERSEDES DWG. NO. / REV. NO.	
THIS DRAWING AND INFORMATION CONTAINED HEREIN ARE THE EXCLUSIVE PROPERTY OF EMERSON CLIMATE TECHNOLOGIES, INC. AND SHALL BE RETURNED UPON DEMAND AND SHALL NOT BE REPRODUCED IN WHOLE OR IN PART, DISCLOSED TO ANYONE ELSE OR USED, WITHOUT THE WRITTEN CONSENT OF EMERSON CLIMATE TECHNOLOGIES, INC.		DATE	DATE FORMAT
MATERIAL SPECIFICATION		SCALE	MM-DD-YY
N/A		5:16	
TITLE		DRAWING NUMBER	SHEET 2 OF 5
REF DWG-WELD COMP ASSM		497-3543-00	5



ECN	REV. NO.	DESCRIPTION	DATE	BY	CHKD	APPR
ECN006587	35	SEE SHEET 2	02-25-13	RRP	MA	KJR
ECN005010	34	SEE SHEET 1	01-17-12	MPC	DC	NB
ECN003330	33	SEE SHEET 1	12-19-11	PJD	DC	DC
ECN003377	32	SEE SHEET 1	02-01-11	PJD	DC	BR
ECN002981	31	UPDATE COVER-TOP	10-13-10	PJD	DC	BH
ECN001809	30	SEE SHEET 1 & 5	06-25-09	FY	LZC	SX
ECN001210	29	SEE SHEET 1	03-30-09	VDJ	DC	BH
ECN001060	28	SEE SHEET 1	09-04-08	CW	MY	BL
ECN000609	27	ADD MODEL NUMBER IN CHART	03-28-08	HWW	DC	DC
ECN000609	26	RELEASED-148 CHANGED FITTING VALVE	08-14-07	AG	DC	BL
ECN000150	25	REDRAWN, SEE SHEET 1	06-15-07	PMM	DC	JTP
32-1198-023	0	RELEASED	01-11-99	AJADAN		



INTERPRET PER ASME Y14.5M-1994 AND EMERSON CLIMATE TECHNOLOGIES, INC. DESIGN STANDARDS DS2002 DO NOT SCALE DRAWING

THIRD ANGLE PROJECTION

CRITICAL PRODUCT CHARACTERISTIC

UNLESS OTHERWISE SPECIFIED DIMENSIONS ARE MILLIMETER OR (INCH)

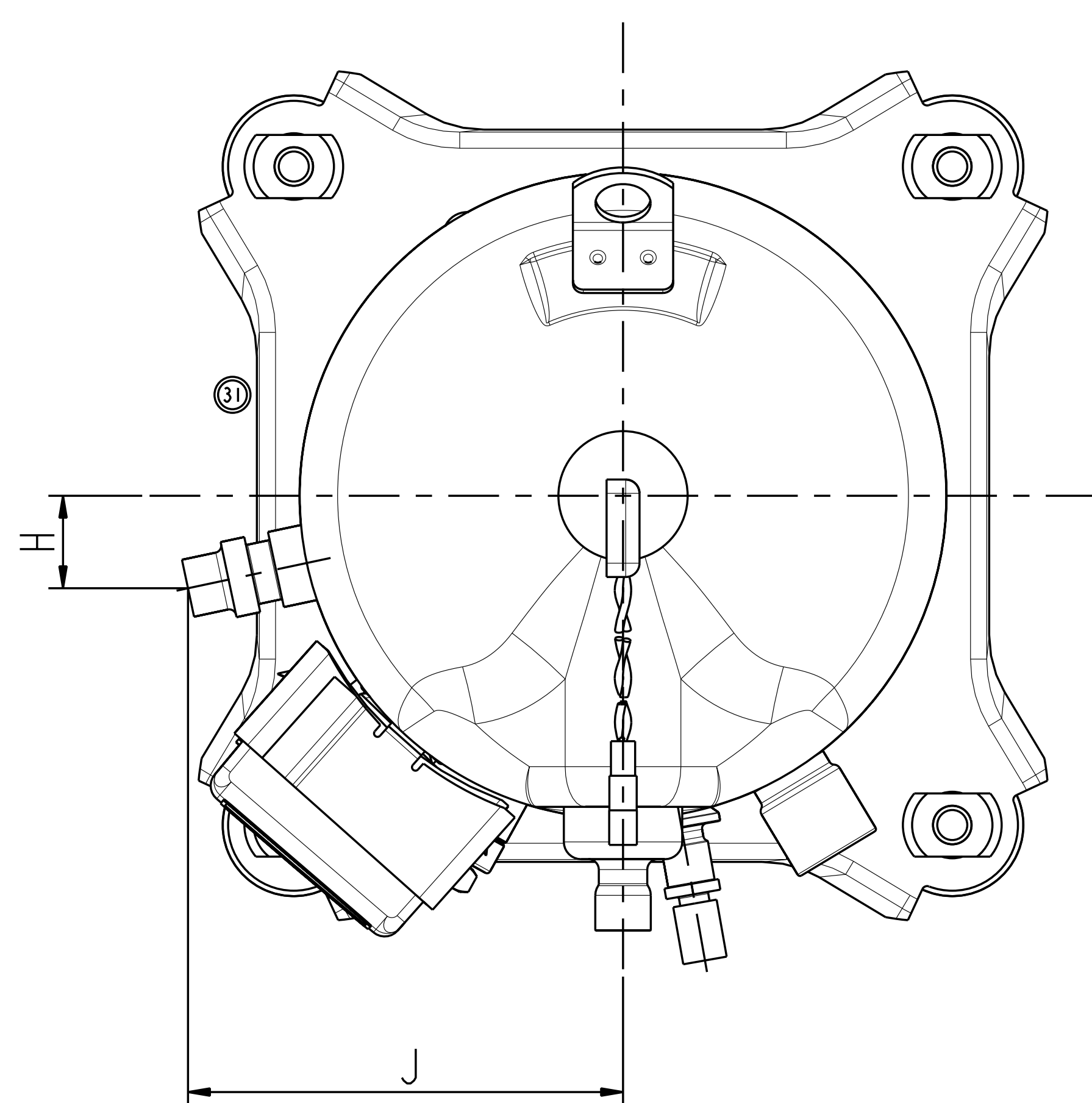
TOLERANCES:  
1-PLACE ± 0.4  
2-PLACE ± 0.15  
ANGULAR ± 0.5°

ENG NOTICE NO.	REV. NO.	REVISIONS	DATE	BY	CHKD	APPR
0		THIS DRAWING AND INFORMATION CONTAINED HEREIN ARE THE EXCLUSIVE PROPERTY OF EMERSON CLIMATE TECHNOLOGIES, INC. AND SHALL BE RETURNED UPON DEMAND AND SHALL NOT BE REPRODUCED IN WHOLE OR IN PART, DISCLOSED TO ANYONE ELSE OR USED, WITHOUT THE WRITTEN CONSENT OF EMERSON CLIMATE TECHNOLOGIES, INC.				

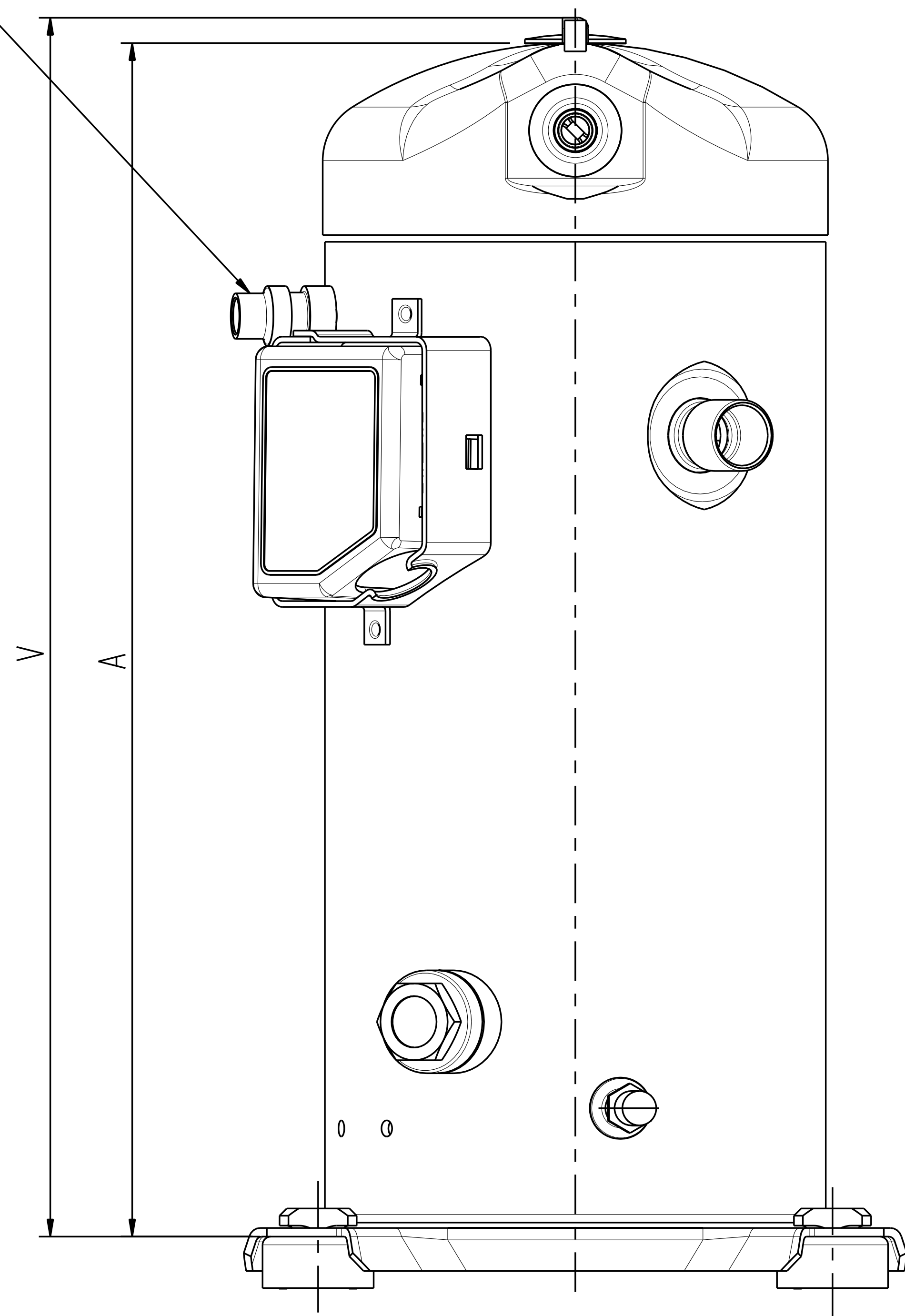
CONFIDENTIALITY NOTICE		MATERIAL SPECIFICATION	
OTL	DATE	DATE	SCALE
497-3543-00 / 24	08-17-07	MM-DD-YY	1:1

TITLE	DRAWN BY	SUPERSEDES DWG. NO. / REV. NO.
REF DWG-WELD COMP ASSM		497-3543-00 / 24

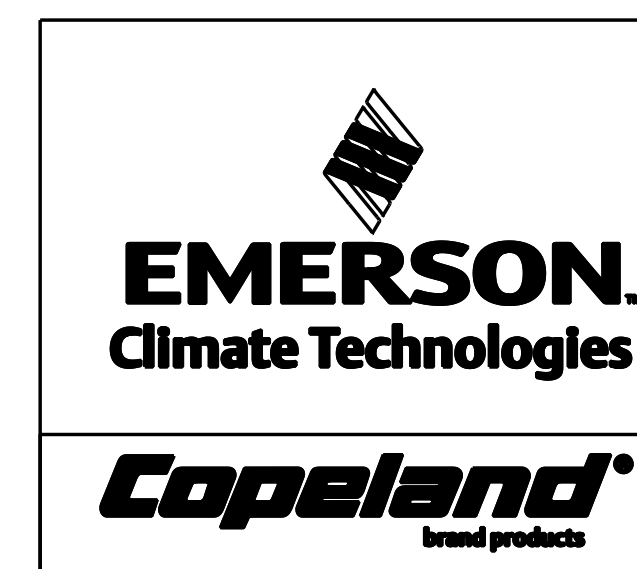
DRAWING NUMBER	SHEET 3 OF 5	SIZE
497-3543-00		5



◆ VAPOR INJECTION FITTING  
[0.50 I.D.]  
PER BILL OF MATERIAL



ENG NOTICE NO.	REV. NO.	REVISIONS	DATE	BY	CHKD	APPR
ECN006587	35	SEE SHEET 2	02-25-13	RRP	MA	KJR
ECN005010	34	SEE SHEET 1	01-17-12	MPC	DC	NB
ECN003330	33	SEE SHEET 1	12-19-11	PJD	DC	DC
ECN003377	32	SEE SHEET 1	02-01-11	PJD	DC	BR
ECN002981	31	UPDATE COVER-TOP	10-13-10	PJD	DC	BH
ECN001809	30	SEE SHEET 1 & 5	06-25-09	FY	LZC	SX
ECN001210	29	SEE SHEET 1	03-30-09	VDJ	DC	BH
ECN001060	28	SEE SHEET 1	09-04-08	CW	MY	BL
ECN000609	27	ADD MODEL NUMBER IN CHART	03-28-08	HWV	DC	DC
ECN000609	26	RELEASED-148 CHANGED FITTING VALVE	08-14-07	AG	DC	BL
ECN000150	25	REDRAWN, SEE SHEET 1	06-15-07	PMM	DC	JTP
32-1198-023	0	RELEASED	01-11-99	AJA	DAN	



INTERPRET PER ASME  
Y14.5M-1994 AND  
EMERSON CLIMATE  
TECHNOLOGIES, INC.  
DESIGN STANDARDS DS2002  
DO NOT SCALE DRAWING

THIRD ANGLE  
PROJECTION

CRITICAL PRODUCT  
CHARACTERISTIC

UNLESS OTHERWISE SPECIFIED  
DIMENSIONS ARE MILLIMETER OR (INCH)

TOLERANCES:  
1-PLACE ±  
2-PLACE ±  
ANGULAR ±

CONFIDENTIALITY NOTICE  
THIS DRAWING AND INFORMATION CONTAINED HEREIN ARE THE EXCLUSIVE  
PROPERTY OF EMERSON CLIMATE TECHNOLOGIES, INC. AND SHALL BE RETURNED  
UPON DEMAND AND SHALL NOT BE REPRODUCED IN WHOLE OR IN PART,  
DISCLOSED TO ANYONE ELSE OR USED, WITHOUT THE WRITTEN CONSENT OF  
EMERSON CLIMATE TECHNOLOGIES, INC.

MATERIAL SPECIFICATION

N/A

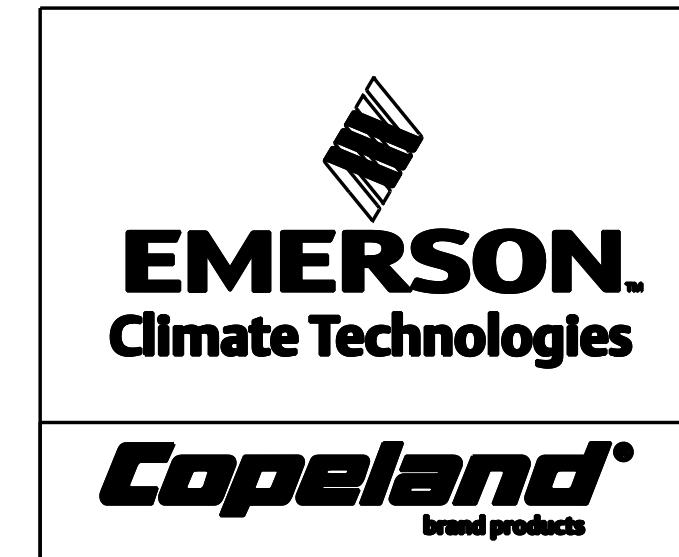
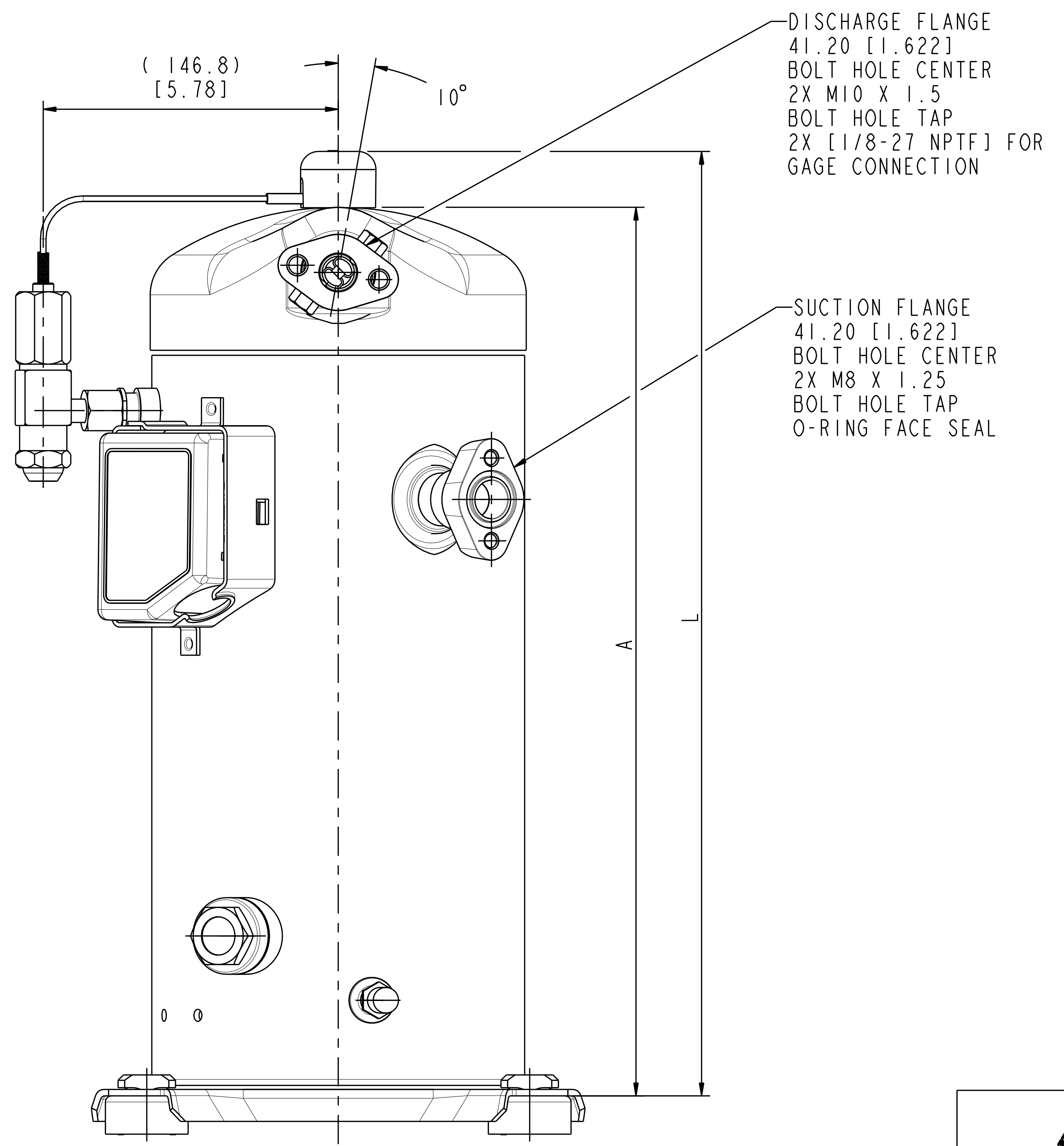
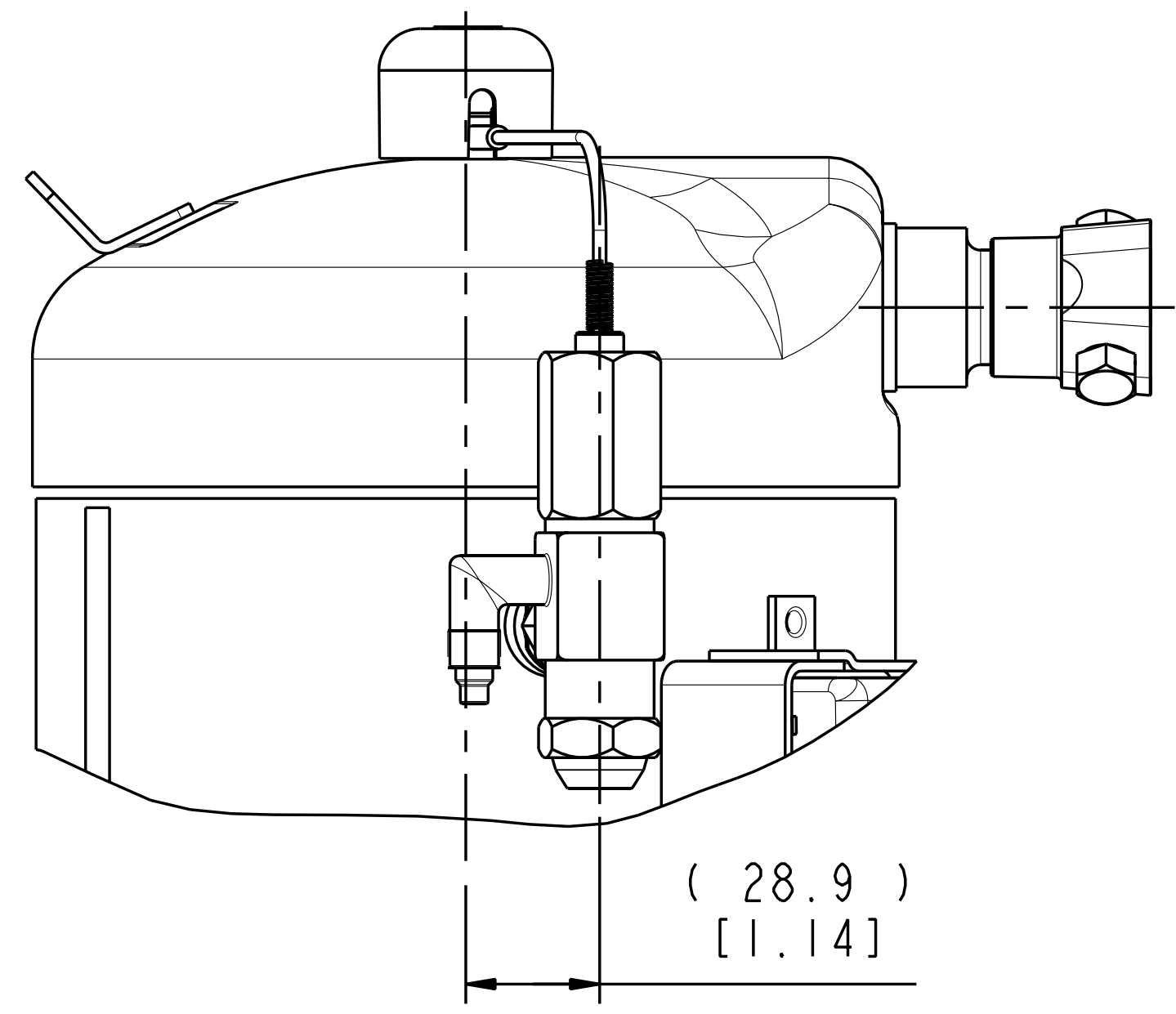
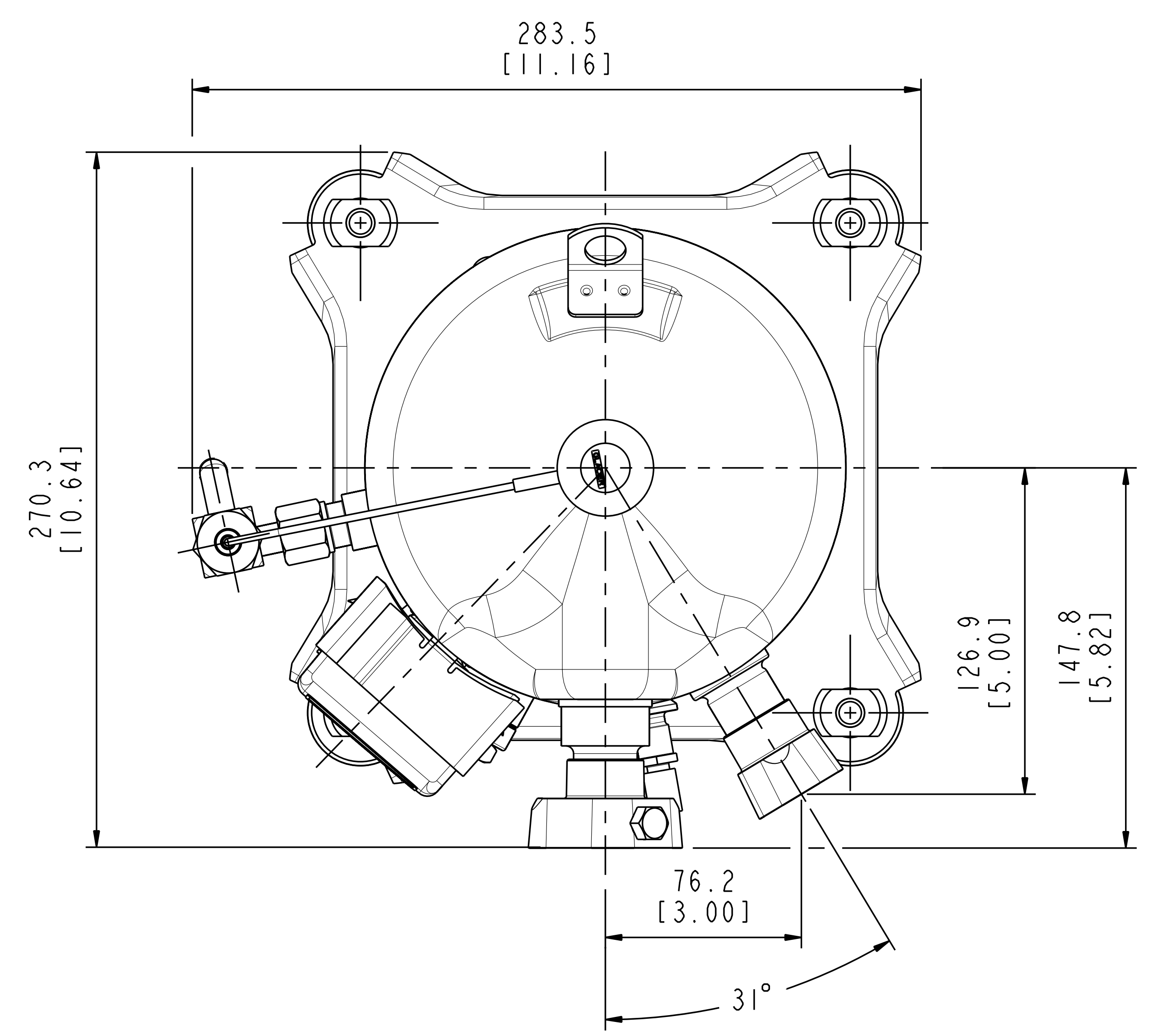
TITLE  
REF DWG-WELD COMP ASSM

DRAWN BY: PMM  
DATE: 03-12-07

SUPERSEDES DWG. NO. / REV. NO.  
497-3543-00 / 24

SCALE: 3:4  
DATE FORMAT: MM-DD-YY

DRAWING NUMBER: 497-3543-00  
SHEET 4 OF 5



INTERPRET PER ASME  
Y14.5M-1994 AND  
EMERSON CLIMATE  
TECHNOLOGIES, INC.  
DESIGN STANDARDS DS2002  
DO NOT SCALE DRAWING

THIRD ANGLE  
PROJECTION

CRITICAL PRODUCT  
CHARACTERISTIC

UNLESS OTHERWISE SPECIFIED  
DIMENSIONS ARE MILLIMETER OR (INCH)

TOLERANCES:  
1-PLACE ± 0.4  
2-PLACE ± 0.15  
ANGULAR ± 0.5°

ECN006587	35	SEE SHEET 2	02-25-13	RRP	MA	KJR
ECN005010	34	SEE SHEET 1	01-17-12	MPC	DC	NB
32-1198-023	0	RELEASED	01-11-99	AJA	DAN	
ENG NOTICE NO.	REV. NO.	REVISIONS	DATE	BY	CHKD	APPR
CONFIDENTIALITY NOTICE						
THIS DRAWING AND INFORMATION CONTAINED HEREIN ARE THE EXCLUSIVE PROPERTY OF EMERSON CLIMATE TECHNOLOGIES, INC. AND SHALL BE RETURNED UPON DEMAND AND SHALL NOT BE REPRODUCED IN WHOLE OR IN PART, DISCLOSED TO ANYONE ELSE OR USED, WITHOUT THE WRITTEN CONSENT OF EMERSON CLIMATE TECHNOLOGIES, INC.						
MATERIAL SPECIFICATION		DRAWN BY / SUPERSEDES DWG. NO. / REV. NO.				
N/A		MMB / DATE / SCALE / DATE FORMAT / MM-DD-YY				
N/A		02-14-12 / 1:2 / MM-DD-YY				
TITLE		DRAWING NUMBER / SHEET 5 OF 5 / DWG SIZE				
REF DWG-WELD COMP ASSM		497-3543-00 / 5				