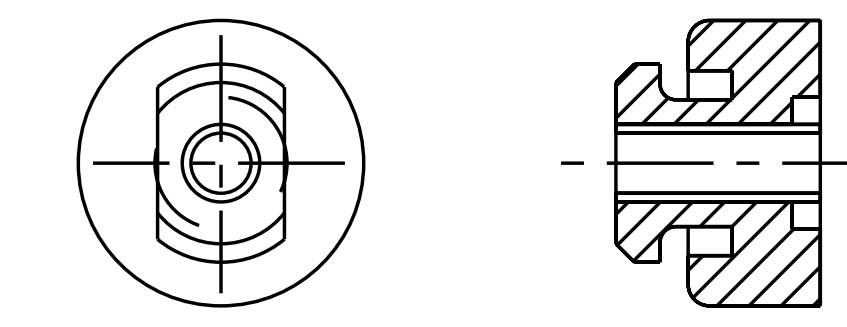


PART NO.	MODEL NUMBER	A ±3.0	B ±3.0	E	F	G	H	J	L±3.0	V±3.0	SHEETS	SPECIFICATIONS	
												ES NO.	DESCRIPTION
497-3543-00	ZF13K4 / K4E ZF15K4 / K4E ZF18K4 / K4E	442.0 [17.40]	408.4 [16.07]	79.5 [3.13]	340.9 [13.42]	47.5 [1.87]	25.6 [1.01]	120.2 [4.73]	469.8 [18.50]	OMIT	1, 2, 3	ES92-155	CONVERSION-METRIC
497-3543-01	ZS30K4 / K4E ZS38K4 / K4E ZS45K4 / K4E	437.7 [17.23]	409.6 [16.13]	79.5 [3.13]	OMIT	47.5 [1.87]	OMIT	OMIT	OMIT	OMIT	1, 2		
497-3543-02	ZB30KC / KCE ZB38KC / KCE ZB42KC / KCE ZB45KC / KCE	437.7 [17.23]	409.6 [16.13]	79.5 [3.13]	OMIT	47.5 [1.87]	OMIT	OMIT	OMIT	OMIT	1, 2		
497-3543-03	ZX30KC-TFD ZX38KC-TFD ZX45KC-TFD	442.0 [17.40]	408.4 [16.07]	OMIT	OMIT	OMIT	OMIT	OMIT	OMIT	OMIT	1, 2		
497-3543-05	ZF13KVE ZF18KVE	442.0 [17.40]	408.4 [16.07]	79.5 [3.13]	340.9 [13.42]	47.5 [1.87]	24.7 [0.97]	116.0 [4.57]	OMIT	451.4 [17.77]	1, 2, 4		
497-3543-07	ZF18K4E-***-524 ZF15K4E-***-524	442.0 [17.40]	408.4 [16.07]	OMIT	340.9 [13.42]	OMIT	25.6 [1.01]	120.2 [4.73]	469.8 [18.50]	OMIT	1, 2, 3		
497-3543-08	ZS30K4E-***-426 ZS38K4E-***-426 ZS45K4E-***-426	437.7 [17.23]	409.6 [16.13]	79.5 [3.13]	OMIT	OMIT	OMIT	OMIT	OMIT	OMIT	1, 2		
497-3543-11	ZB30KQ/KQE ZB38KQ/KQE ZB45KQ/KQE	437.7 [17.24]	409.6 [16.13]	OMIT	OMIT	OMIT	OMIT	OMIT	OMIT	OMIT	1, 2		
497-3543-12	ZB48KQ / KQE	443.4 [17.46]	413.7 [16.30]	OMIT	OMIT	OMIT	OMIT	OMIT	OMIT	OMIT	1, 2		
497-3543-13	ZS30K4*-***-524 ZS38K4*-***-524 ZS45K4*-***-524	437.7 [17.23]	409.6 [16.13]	OMIT	OMIT	OMIT	OMIT	OMIT	OMIT	OMIT	1, 2		
497-3543-14	ZX30KC/KCE-PFV/TF5 ZX38KC/KCE-TF5 ZX45KC/KCE-TF5 ZX38KC/KCE-PFV	437.7 [17.24]	409.6 [16.13]	OMIT	OMIT	OMIT	OMIT	OMIT	OMIT	OMIT	1, 2		
497-3543-15	ZB48KQ/KQE-***-558	443.4 [17.46]	413.7 [16.30]	79.5 [3.13]	OMIT	OMIT	OMIT	OMIT	OMIT	OMIT	1, 5		
497-3543-16	ZB30KQ/KQE-***-558 ZB38KQ/KQE-***-558 ZB45KQ/KQE-***-558	437.7 [17.24]	409.6 [16.13]	79.5 [3.13]	OMIT	OMIT	OMIT	OMIT	OMIT	OMIT	1, 5		

NOTES:

- 1. ALL TOLERANCES ±1.50 [0.060] UNLESS OTHERWISE SPECIFIED.
- 2. DUE TO ACCUMULATED ASSEMBLY TOLERANCES THE LISTED COMPONENTS MAY VARY FROM THE MOUNTING HOLES AS SHOWN BELOW:
SUCTION FITTING : ±3.0 [0.12]
DISCHARGE FITTING: ±3.0 [0.12]
- 3. TUBE ENDS MUST BE PLUGGED.
- 4. TORQUE T-BLOCK SCREWS TO 2.4-2.6 Nm [21-23 IN LBS].
- 5. INJECTION FITTING & THERMOSTAT TUBE OMITTED.
- 6. FOR MORE INFORMATION SEE PRODUCT CATALOG.
- 7. FULL HEIGHT OF COMPRESSOR DOES NOT INCLUDE MOUNTING SPACERS.
- 8. MOUNTING KIT:

GROMMET DUROMETER	4 FOOT KIT
35-45	527-0116-00

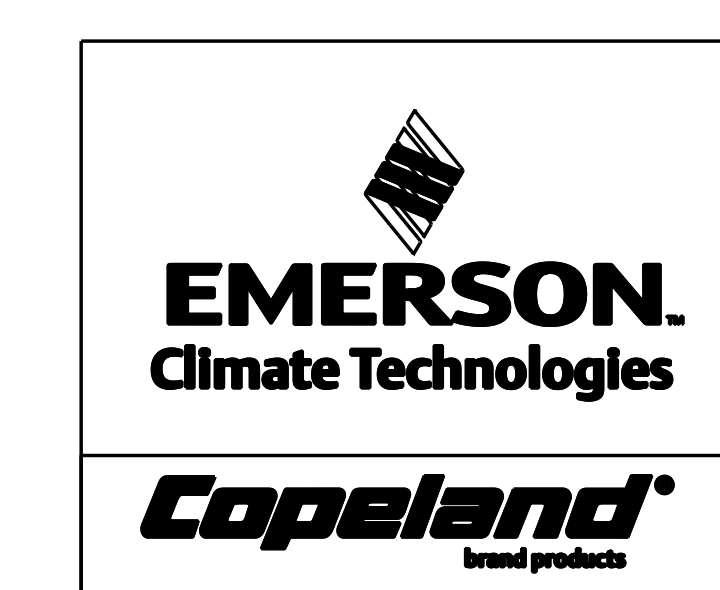


COMPRESSOR WIRING DIAGRAM

USE COPPER CONDUCTORS ONLY. USE MINIMUM 75°C WIRE FOR AMPACITY DETERMINATION. INTERNAL MOTOR PROTECTION - ALLOW TIME FOR RESET. OVERCURRENT PROTECTION DEVICE RATING AND TYPE MUST BE IN ACCORDANCE WITH REGULATORY AGENCY END PRODUCT APPROVALS-SEE SYSTEM NAMEPLATE. CRANKCASE HEATER, WHEN APPLIED, MUST BE CONNECTED ONLY TO ITS RATED VOLTAGE. TO CORRECT IMPROPER ROTATION OF THREE PHASE MODELS, SWITCH ANY TWO SUPPLY LINES. REFER TO THE APPLICABLE SYSTEM WIRING DIAGRAM.

005-1213-00

8-06



INTERPRET PER ASME Y14.5M-1994 AND EMERSON CLIMATE TECHNOLOGIES, INC. DESIGN STANDARDS DS2002 DO NOT SCALE DRAWING

THIRD ANGLE PROJECTION

CRITICAL PRODUCT CHARACTERISTIC

UNLESS OTHERWISE SPECIFIED DIMENSIONS ARE MILLIMETER OR (INCH)

TOLERANCES:
1-PLACE ± 0.4
2-PLACE ± 0.15
ANGULAR ± 0.5°

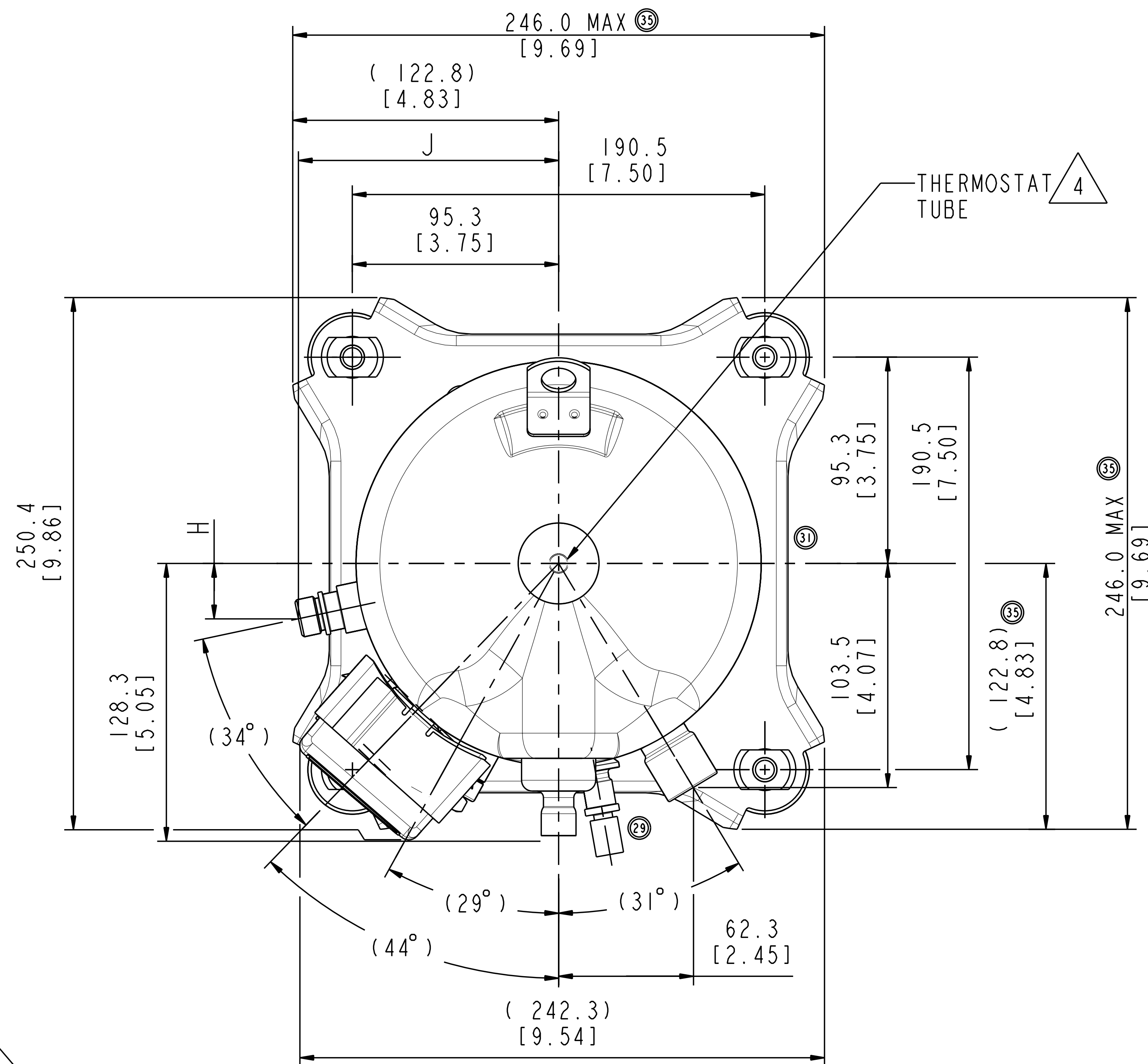
ENG NOTICE NO.	REV. NO.	REVISIONS	DATE	BY	CHKD	APPR
ECN006587	36	REMOVED SHEET NO.05	07-16-13	RRP	BR	KJR
ECN006587	35	SEE SHEET 2	02-25-13	RRP	MA	KJR
	34	NEVER RELEASED	01-17-12	MPC	DC	NB
ECN003330	33	OBSOLETE -13	12-19-11	PJD	DC	DC
ECN003377	32	ADDED ZF15K4E-***-524 TO -07	02-01-11	PJD	DC	BR
ECN002981	31	REMOVED SHEET 5, CORRECTED WIRING DIAGRAM	10-13-10	PJD	DC	BH
ECN001809	30	OBSOLETE -03, -11, -12, -14 TO -16	06-25-09	FY	LZC	SX
ECN001210	29	PICTORIALLY UPDATE FOR OIL FITTING	03-30-09	VDJ	DC	BH
ECN001060	28	RELEASED -15/-16	09-4-08	CW	MY	BL
ECN000609	27	ADD MODEL NUMBER IN CHART	03-28-08	HWW	DC	DC
ECN000609	26	RELEASED-148 CHANGED FITTING VALVE	08-14-07	AG	DC	BL
ECN000150	25	RELEASED -13;OBSOLETE -06,-10	06-15-07	PMM	DC	JTP
32-1198-023	0	RELEASED	01-11-99	AJADAN		

CONFIDENTIALITY NOTICE
THIS DRAWING AND INFORMATION CONTAINED HEREIN ARE THE EXCLUSIVE PROPERTY OF EMERSON CLIMATE TECHNOLOGIES, INC. AND SHALL BE RETURNED UPON DEMAND AND SHALL NOT BE REPRODUCED IN WHOLE OR IN PART, DISCLOSED TO ANYONE ELSE OR USED, WITHOUT THE WRITTEN CONSENT OF EMERSON CLIMATE TECHNOLOGIES, INC.

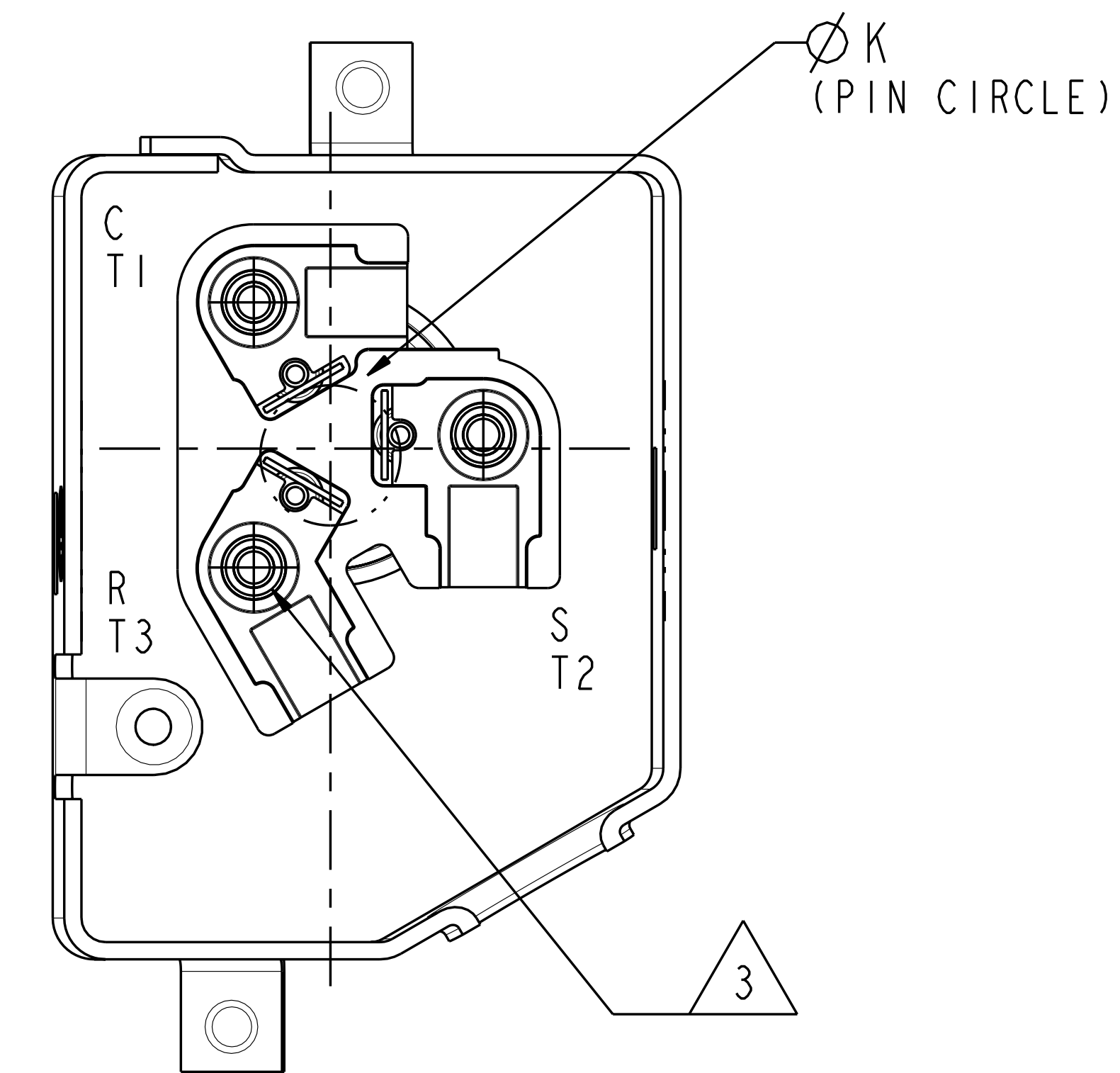
MATERIAL SPECIFICATION: N/A

DRAWN BY: OTL
DATE: 08-17-07
SUPERSEDES DWG. NO. / REV. NO.: 497-3543-00 / 24
SCALE: I:1
DATE FORMAT: MM-DD-YY
DRAWING NUMBER: 497-3543-00
SHEET 1 OF 4

TITLE: REF DWG-WELD COMP ASSM



MOTOR TYPE	Ø K PIN CIRCLE
PFJ PFV TF5	13.46 [0.530]
TFD TFE TF7	17.45 [0.687]

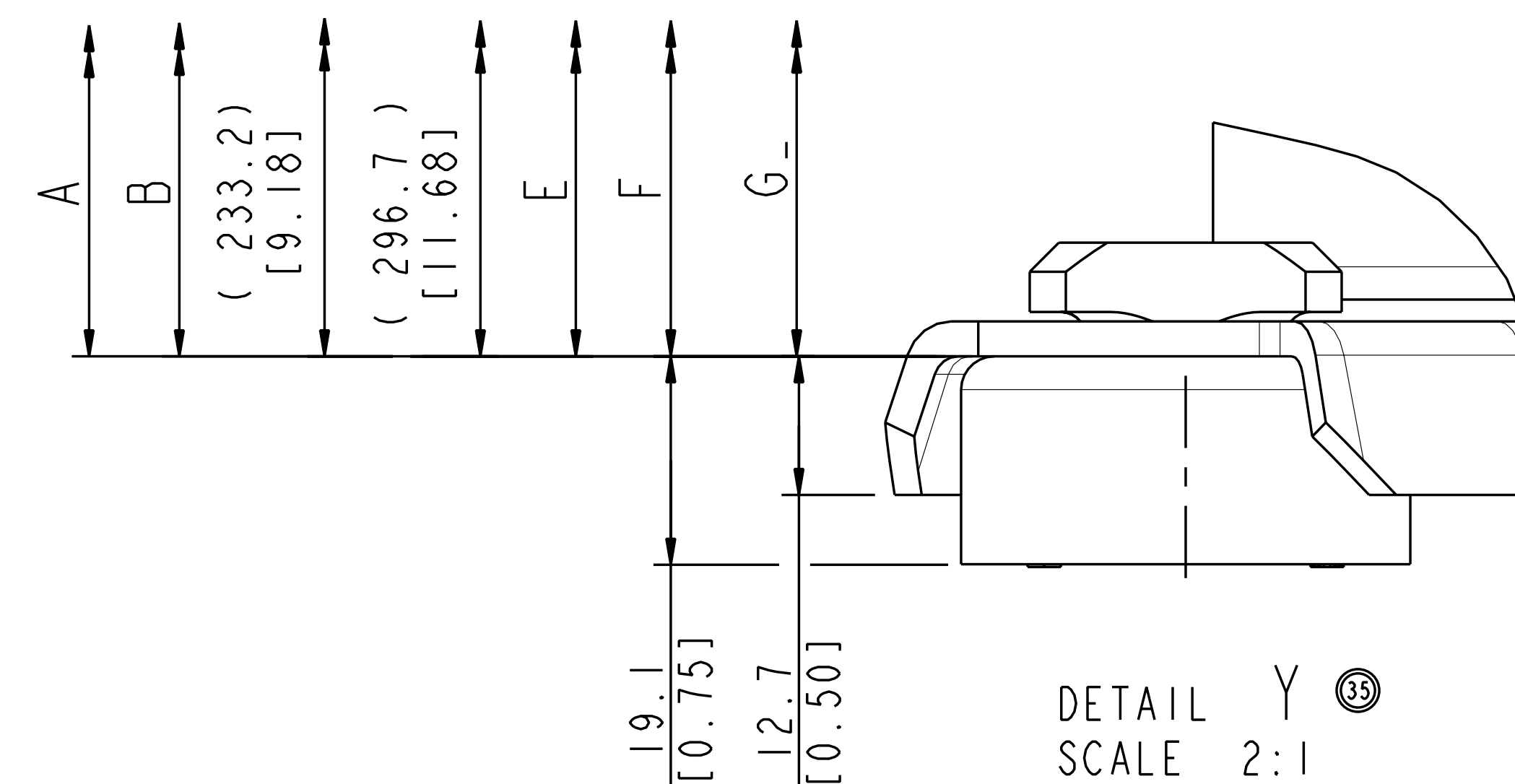
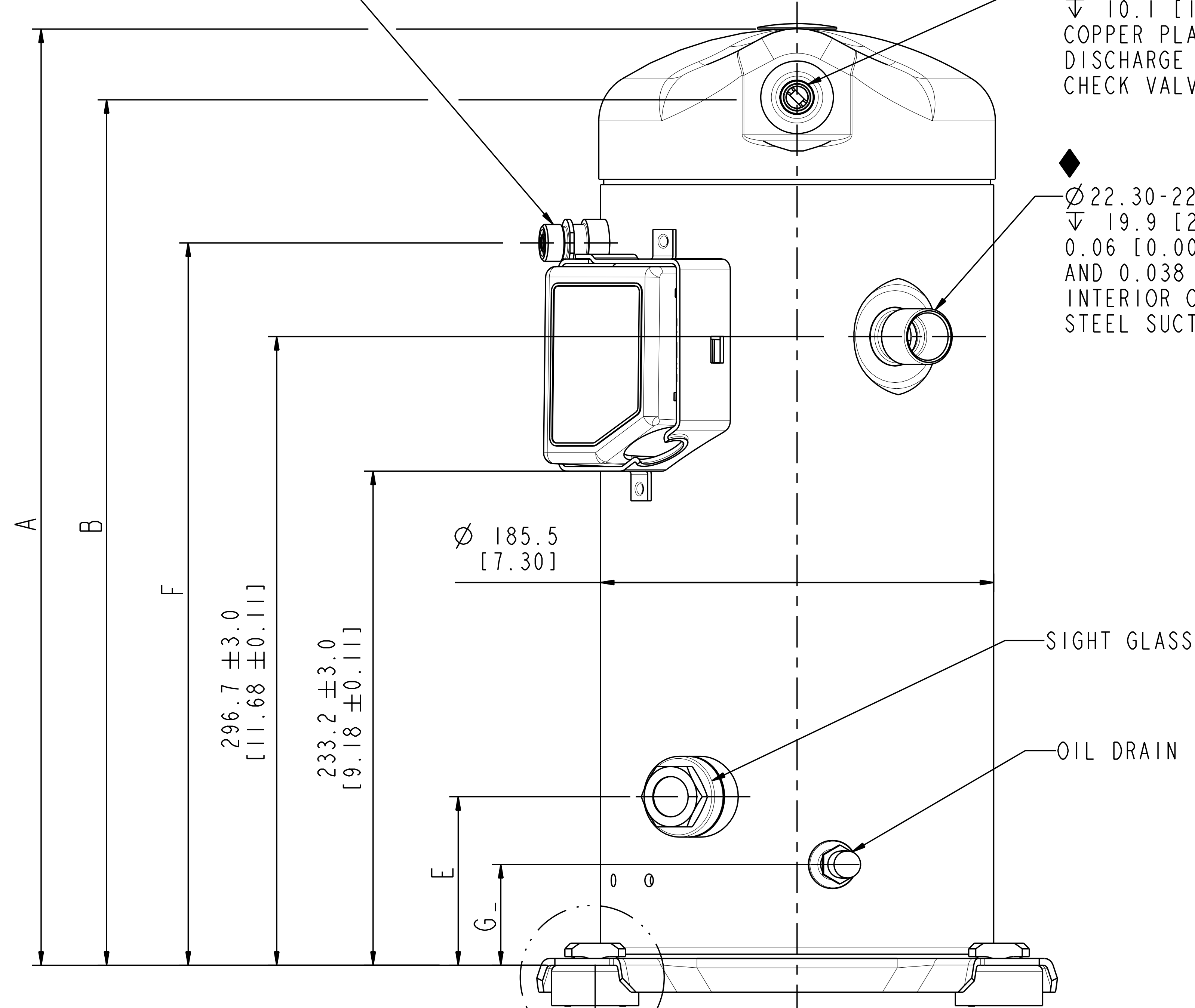


SCALE 3:2

4 LIQUID INJECTION FITTING
[11/16-16 UN-2A THREADS]
[0.25 ID]
PER BILL OF MATERIAL
(SEE SHEET 4 FOR VAPOR
INJECTION FITTING OPTIONS)

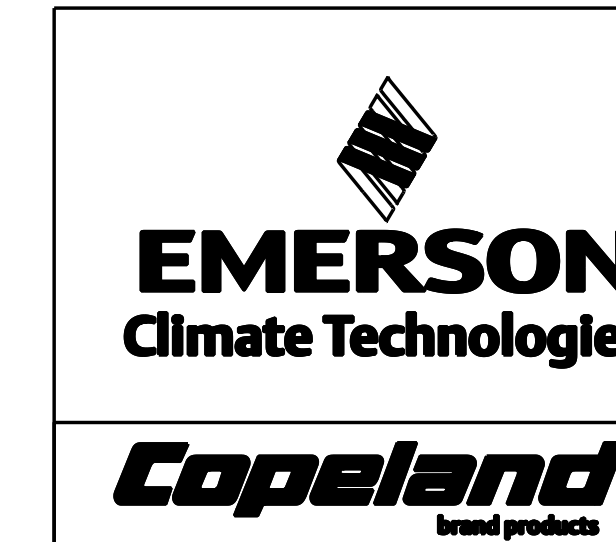
Ø 12.78-12.90 [0.503-0.508] I.D. 35
▽ 10.1 [13/32] MIN.
COPPER PLATED STEEL
DISCHARGE FITTING/
CHECK VALVE 26

Ø 22.30-22.43 [0.878-0.883] I.D. 35
▽ 19.9 [25/32] MIN.
0.06 [0.002] MIN THICK EXTERIOR
AND 0.038 [0.0015] MIN THICK
INTERIOR COPPER PLATED
STEEL SUCTION FITTING



DETAIL Y 35
SCALE 2:1

35 SEE DETAIL Y



INTERPRET PER ASME
Y14.5M-1994 AND
EMERSON CLIMATE
TECHNOLOGIES, INC.
DESIGN STANDARDS DS2002
DO NOT SCALE DRAWING

THIRD ANGLE
PROJECTION

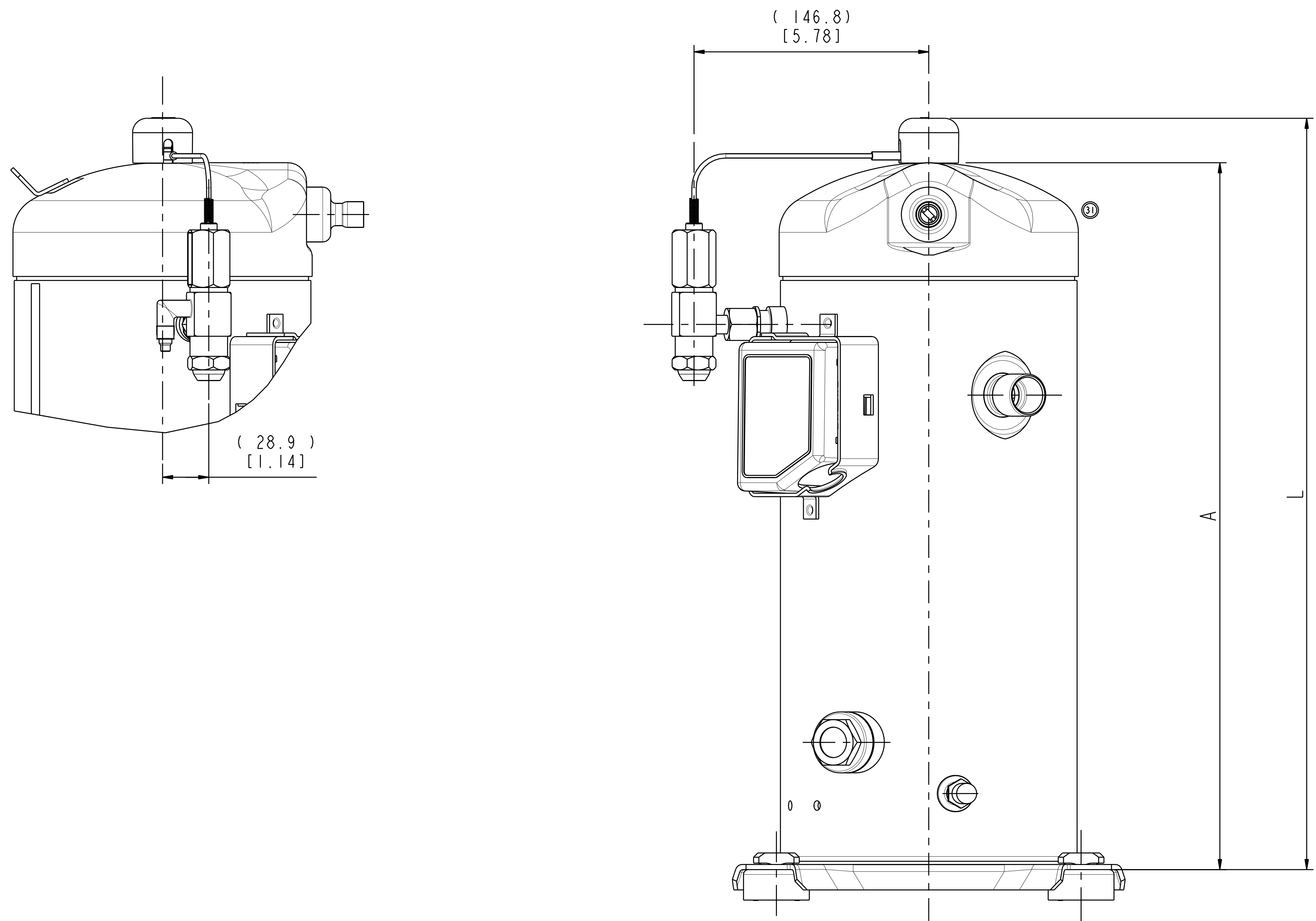
CRITICAL PRODUCT
CHARACTERISTIC

UNLESS OTHERWISE SPECIFIED
DIMENSIONS ARE MILLIMETER OR (INCH)

TOLERANCES:
1-PLACE ±
2-PLACE ±
ANGULAR ±

ENG NOTICE NO.	REV. NO.	REVISIONS	DATE	BY	CHKD	APPR
ECN006587	36	SEE SHEET I	07-16-13	RRP	BR	KJR
ECN006587	35	CHANGED DIMENSIONS	02-25-13	RRP	MA	KJR
-	34	SEE SHEET I	01-17-12	MPC	DC	NB
ECN003330	33	SEE SHEET I	12-19-11	PJD	DC	DC
ECN003377	32	SEE SHEET I	02-01-11	PJD	DC	BR
ECN002981	31	UPDATE COVER-TOP	10-13-10	PJD	DC	BH
ECN001809	30	SEE SHEET I & 5	06-25-09	FY	LZC	SX
ECN001210	29	SEE SHEET I	03-30-09	VDJ	DC	BH
ECN001060	28	SEE SHEET I	09-04-08	CW	MY	BL
ECN000609	27	ADD MODEL NUMBER IN CHART	03-28-08	HW	DC	DC
ECN000609	26	RELEASED-I48 CHANGED FITTING VALVE	08-14-07	AG	DC	BL
ECN000150	25	REDRAWN, SEE SHEET I	06-15-07	PMM	DC	JTP
32-1198-023	0	RELEASED	01-11-99	AJA	DAN	

MATERIAL SPECIFICATION		SUPERSEDES DWG. NO. / REV. NO.	
N/A		497-3543-00	24
DATE		SCALE	DATE FORMAT
03-12-07	5:16	MM-DD-YY	
TITLE		DRAWING NUMBER	SHEET 2 OF 4 DWG
REF DWG-WELD COMP ASSM		497-3543-00	5



ECN	REV. NO.	DESCRIPTION	DATE	BY	CHKD	APPR
ECN006587	36	SEE SHEET 1	07-16-13	RRP	BR	KJR
ECN006587	35	SEE SHEET 2	02-25-13	RRP	MA	KJR
--	34	SEE SHEET 1	01-17-12	MPC	DC	NB
ECN003330	33	SEE SHEET 1	12-19-11	PJD	DC	DC
ECN003377	32	SEE SHEET 1	02-01-11	PJD	DC	BR
ECN002981	31	UPDATE COVER-TOP	10-13-10	PJD	DC	BH
ECN001809	30	SEE SHEET 1 & 5	06-25-09	FY	LZC	SX
ECN001210	29	SEE SHEET 1	03-30-09	VDJ	DC	BH
ECN001060	28	SEE SHEET 1	09-04-08	CW	MY	BL
ECN000609	27	ADD MODEL NUMBER IN CHART	03-28-08	HHW	DC	DC
ECN000609	26	RELEASED-148 CHANGED FITTING VALVE	08-14-07	AG	DC	BL
ECN000150	25	REDRAWN, SEE SHEET 1	06-15-07	PMM	DC	JTP
32-1198-023	0	RELEASED	01-11-99	AJADAN		



INTERPRET PER ASME Y14.5M-1994 AND EMERSON CLIMATE TECHNOLOGIES, INC. DESIGN STANDARDS DS2002 DO NOT SCALE DRAWING

THIRD ANGLE PROJECTION

CRITICAL PRODUCT CHARACTERISTIC

UNLESS OTHERWISE SPECIFIED DIMENSIONS ARE MILLIMETER OR (INCH)

TOLERANCES:
1-PLACE ± 0.4
2-PLACE ± 0.15
ANGULAR ± 0.5°

CONFIDENTIALITY NOTICE

THIS DRAWING AND INFORMATION CONTAINED HEREIN ARE THE EXCLUSIVE PROPERTY OF EMERSON CLIMATE TECHNOLOGIES, INC. AND SHALL BE RETURNED UPON DEMAND AND SHALL NOT BE REPRODUCED IN WHOLE OR IN PART, DISCLOSED TO ANYONE ELSE OR USED, WITHOUT THE WRITTEN CONSENT OF EMERSON CLIMATE TECHNOLOGIES, INC.

MATERIAL SPECIFICATION

N/A

DATE: 08-17-07

SCALE: 1:1

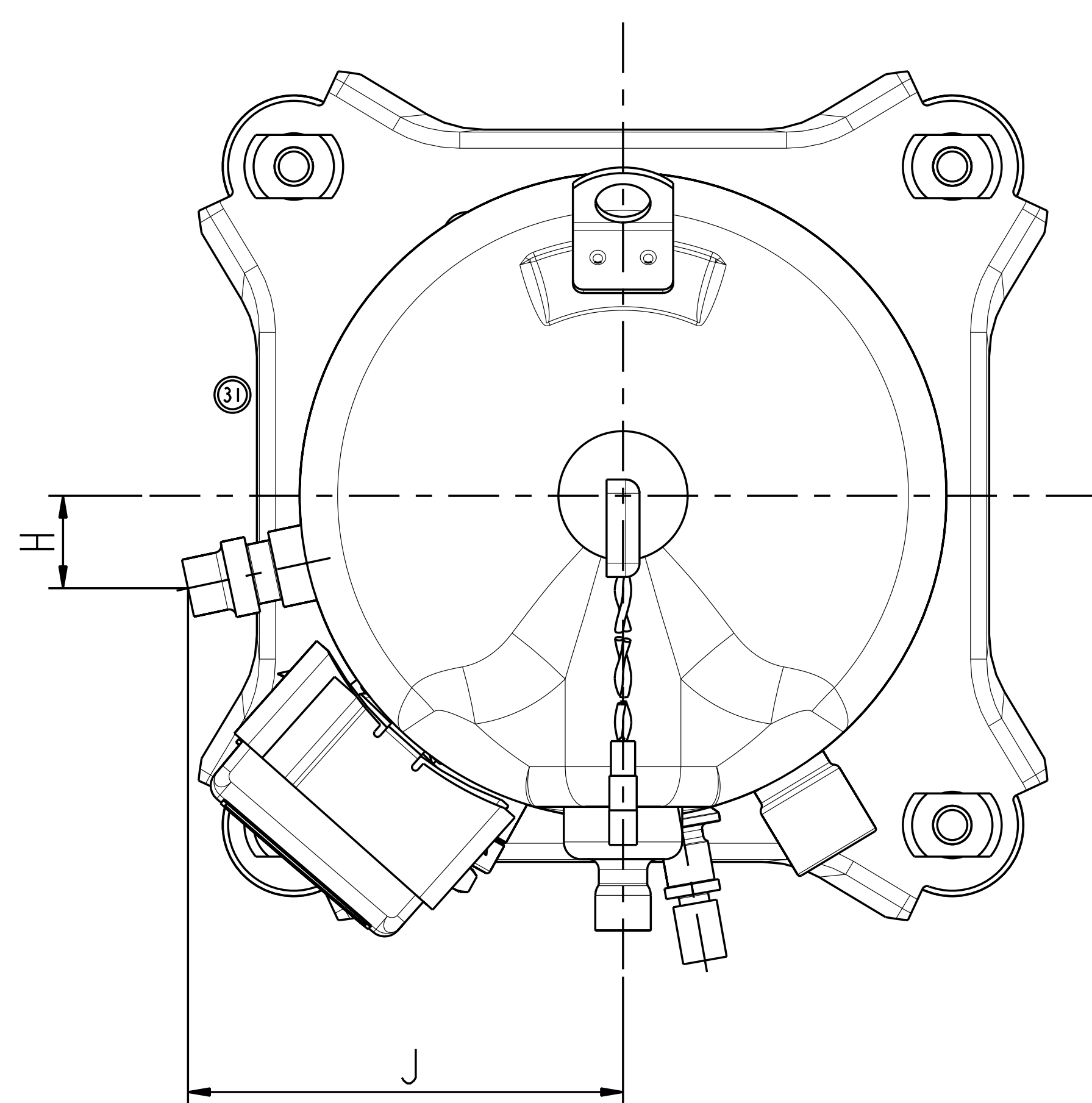
DATE FORMAT: MM-DD-YY

TITLE: REF DWG-WELD COMP ASSM

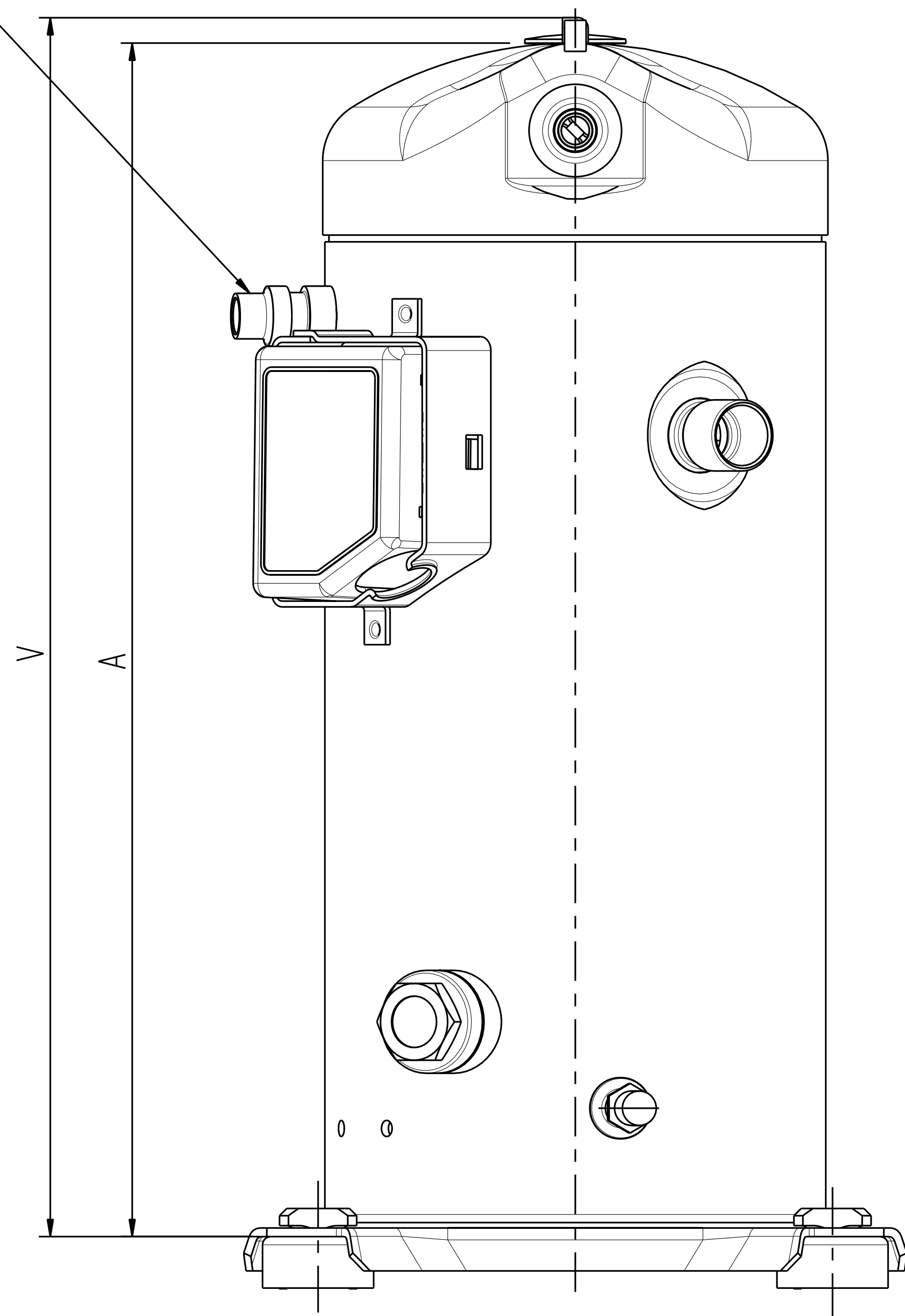
DRAWING NUMBER: 497-3543-00

SHEET 3 OF 4

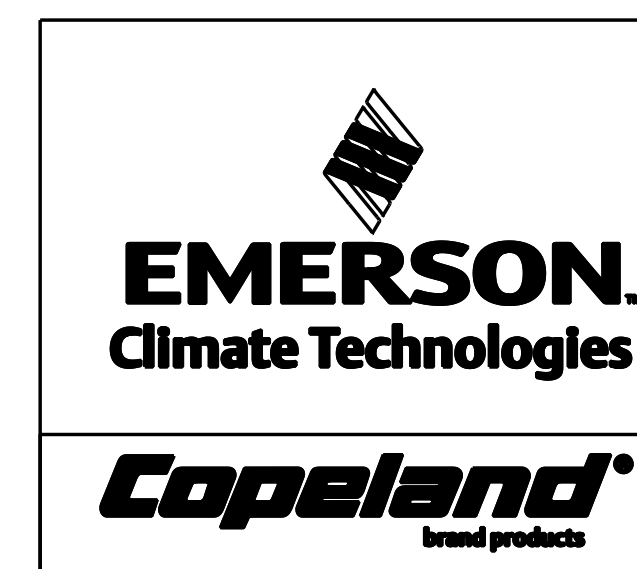
SIZE: 5



◆ VAPOR INJECTION FITTING
[0.50 I.D.]
PER BILL OF MATERIAL



ENG NOTICE NO.	REV. NO.	REVISIONS	DATE	BY	CHKD	APPR
ECN006587	36	SEE SHEET 1	07-16-13	RRP	BR	KJR
ECN006587	35	SEE SHEET 2	02-25-13	RRP	MA	KJR
--	34	SEE SHEET 1	01-17-12	MPC	DC	NB
ECN003330	33	SEE SHEET 1	12-19-11	PJD	DC	DC
ECN003377	32	SEE SHEET 1	02-01-11	PJD	DC	BR
ECN002981	31	UPDATE COVER-TOP	10-13-10	PJD	DC	BH
ECN001809	30	SEE SHEET 1 & 5	06-25-09	FY	LZC	SX
ECN001210	29	SEE SHEET 1	03-30-09	VDJ	DC	BH
ECN001060	28	SEE SHEET 1	09-04-08	CW	MY	BL
ECN000609	27	ADD MODEL NUMBER IN CHART	03-28-08	HHW	DC	DC
ECN000609	26	RELEASED-148 CHANGED FITTING VALVE	08-14-07	AG	DC	BL
ECN000150	25	REDRAWN, SEE SHEET 1	06-15-07	PMM	DC	JTP
32-1198-023	0	RELEASED	01-11-99	AJA	DAN	



INTERPRET PER ASME
Y14.5M-1994 AND
EMERSON CLIMATE
TECHNOLOGIES, INC.
DESIGN STANDARDS DS2002
DO NOT SCALE DRAWING

THIRD ANGLE
PROJECTION

CRITICAL PRODUCT
CHARACTERISTIC

UNLESS OTHERWISE SPECIFIED
DIMENSIONS ARE MILLIMETER OR (INCH)

TOLERANCES:
1-PLACE ±
2-PLACE ±
ANGULAR ±

CONFIDENTIALITY NOTICE
THIS DRAWING AND INFORMATION CONTAINED HEREIN ARE THE EXCLUSIVE
PROPERTY OF EMERSON CLIMATE TECHNOLOGIES, INC. AND SHALL BE RETURNED
UPON DEMAND AND SHALL NOT BE REPRODUCED IN WHOLE OR IN PART,
DISCLOSED TO ANYONE ELSE OR USED, WITHOUT THE WRITTEN CONSENT OF
EMERSON CLIMATE TECHNOLOGIES, INC.

MATERIAL SPECIFICATION

N/A

TITLE
REF DWG-WELD COMP ASSM

DRAWN BY: PMM
DATE: 03-12-07

SUPERSEDES DWG. NO. / REV. NO.
497-3543-00 / 24

SCALE: 3:4
DATE FORMAT: MM-DD-YY

DRAWING NUMBER: 497-3543-00
SHEET 4 OF 4