

MODEL NUMBER

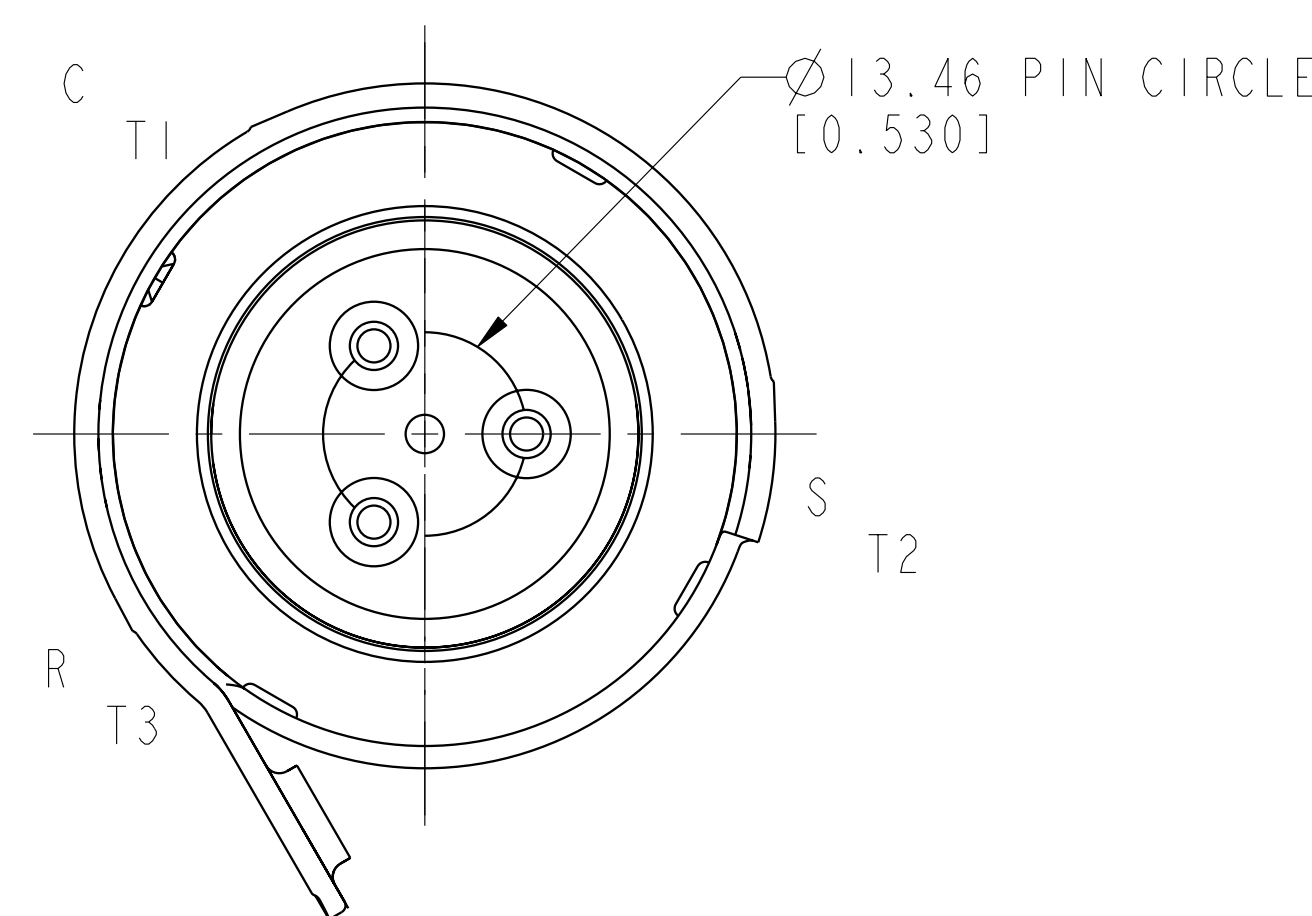
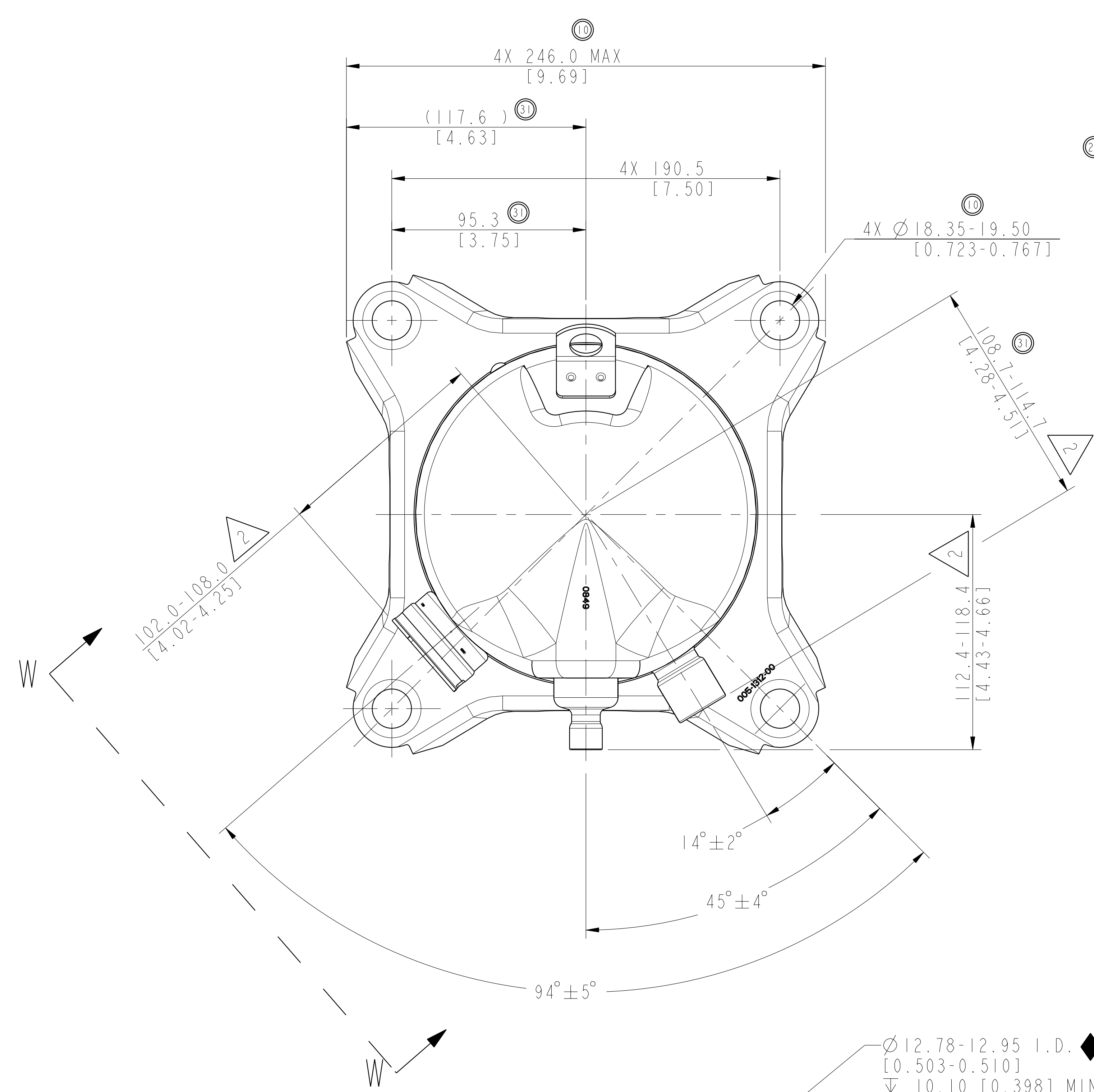
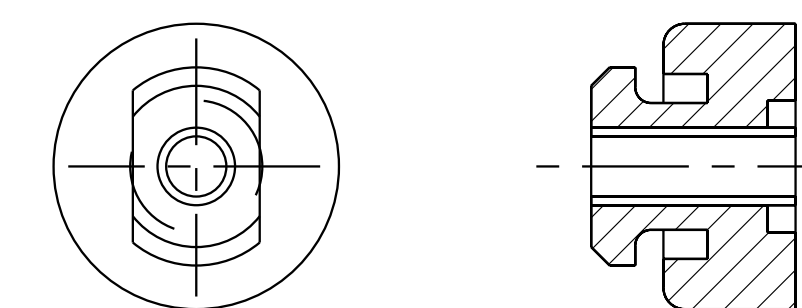
21	ZP34/36/38/39/42/44/49/51/54K5E-PFV
19	ZP34/36/38/39/42/44/49/51/54K5E-TF5
22	ZP34/36/38/39/42/44/49/51/54K5E-TFD
31	ZP36/42/44/49/51/54K5E-PFJ
20	ZP34/36/38/39/42/44/49/51/54K5E-TFE
23	ZP39/44/49/51K5E-TF7

SPECIFICATIONS	
ES NO.	DESCRIPTION
ES92-155	CONVERSION-METRIC

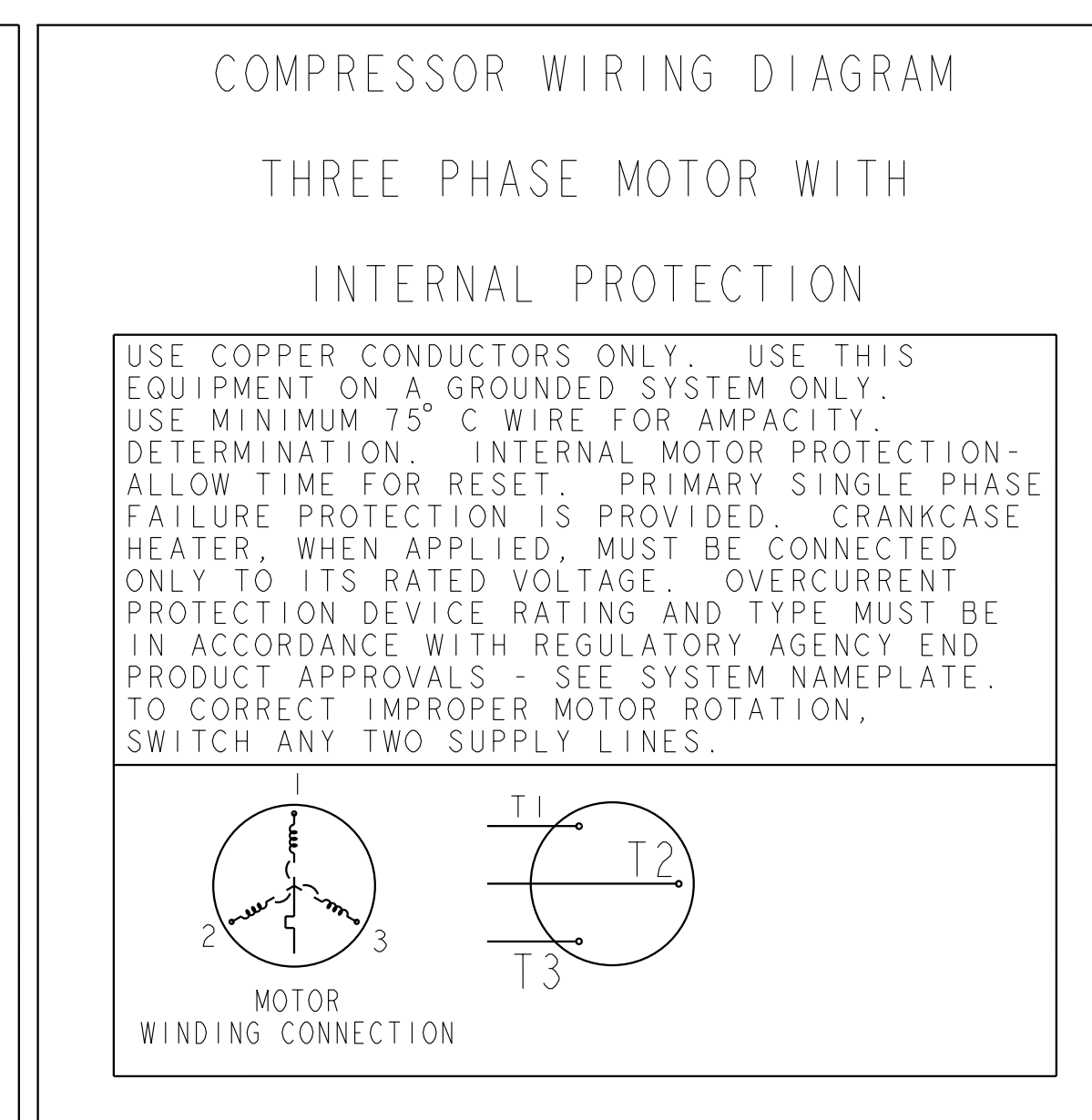
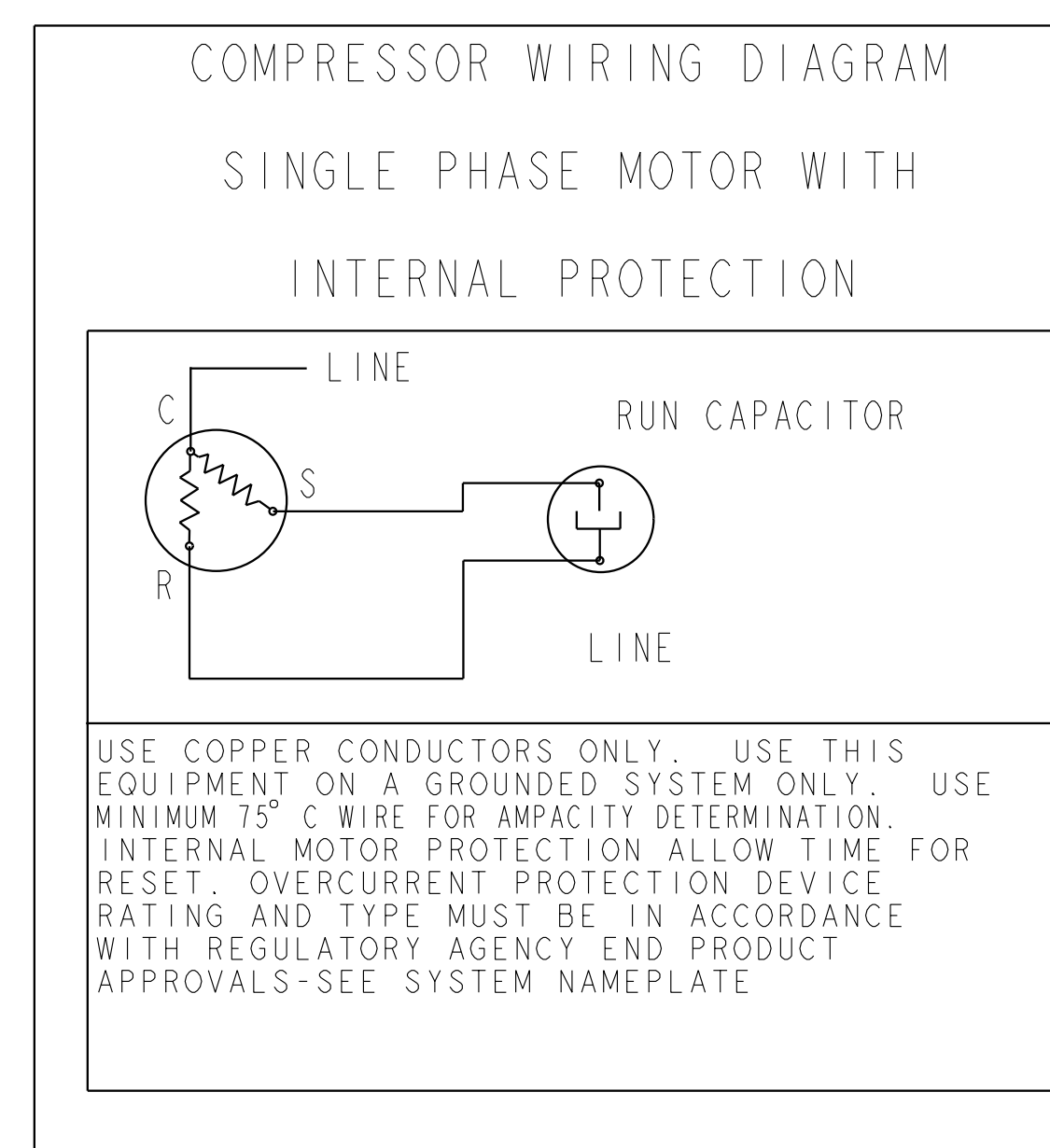
NOTES:

- ALL TOLERANCES ± 1.50 [0.060] UNLESS OTHERWISE SPECIFIED.
- THE SUCTION TUBE, DISCHARGE TUBE, AND FENCE RADIAL DIMENSIONS ARE TO BE GAUGED FROM THE CENTER OF THE MOUNTING HOLE PATTERN.
- TUBE ENDS MUST BE PLUGGED.
- MOUNTING KIT:

GROMMET DUROMETER	4 FOOT KIT
35-45	527-0116-00

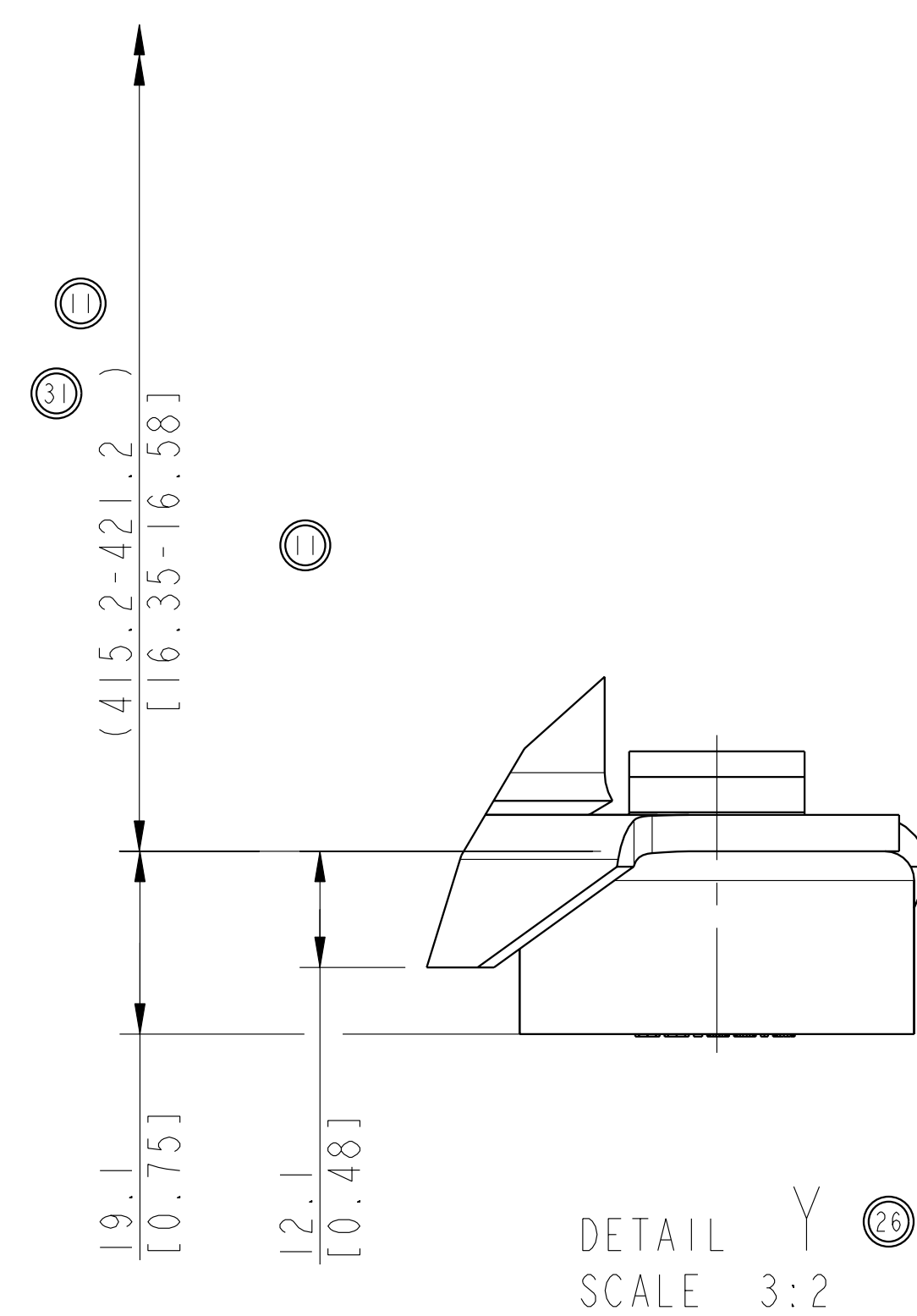


VIEW W-W
SCALE 2:1

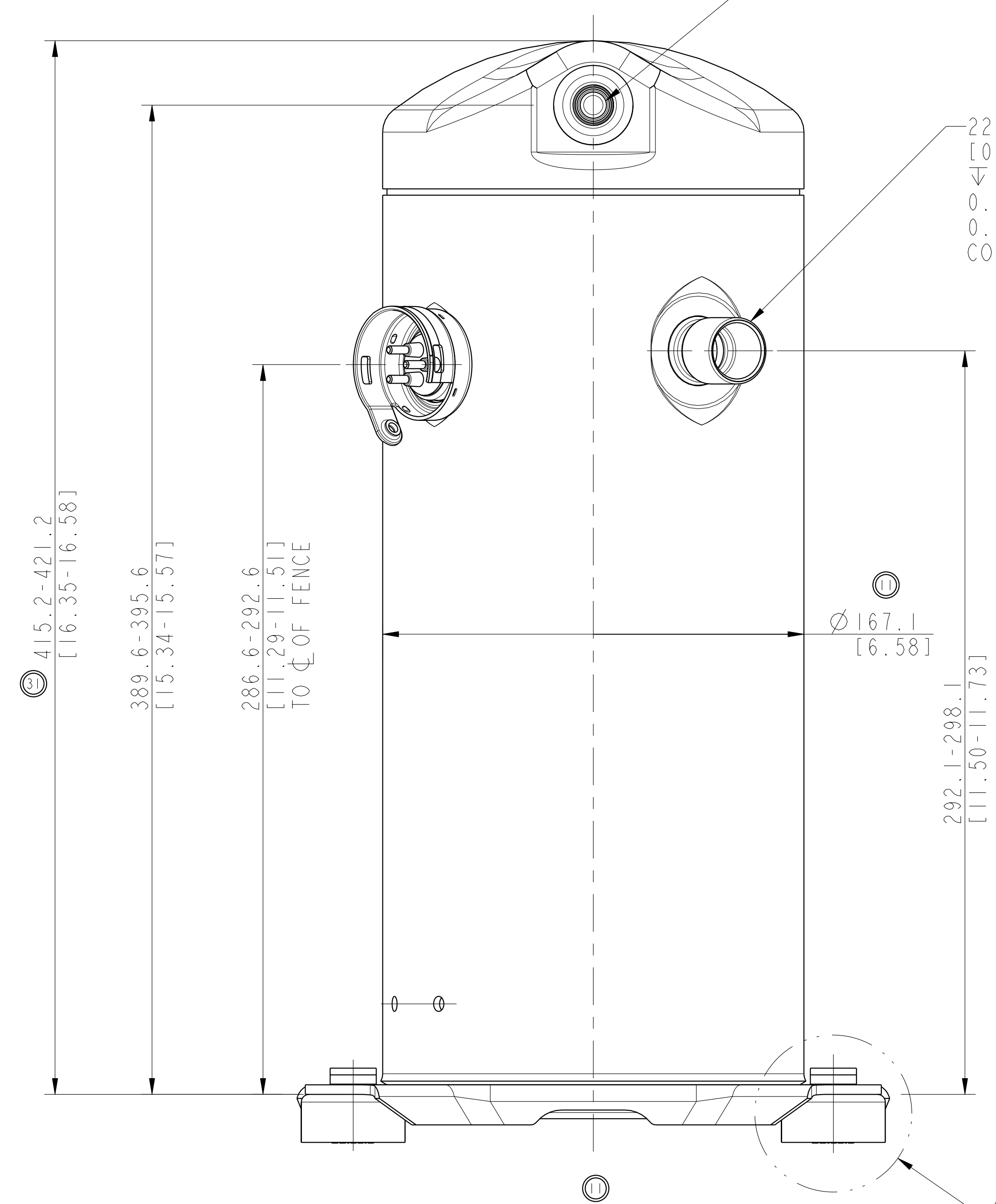


12.78-12.95 I.D. [0.503-0.510]
10.10 [0.398] MIN,
0.038 [0.0015] MIN THICK EXTERIOR AND
0.038 [0.0015] MIN THICK INTERIOR
COPPER PLATED STEEL DISCHARGE FITTING.

22.30-22.48 I.D. [0.878-0.885]
19.9 [0.78] MIN,
0.038 [0.0015] MIN THICK EXTERIOR AND
0.038 [0.0015] MIN THICK INTERIOR
COPPER PLATED STEEL SUCTION FITTING



DETAIL Y
SCALE 3:2



SEE DETAIL Y

ECN	REV	DESCRIPTION	DATE	BY	CHKD	APPR
ECN003097	31	ADDED ZP44K5E-PFJ, MODIFIED DIMENSIONS	12-19-11	PBM	BR	KJR
ECN004352	30	ADDED MODEL ZP39K5E-TF7	10-07-11	INY	BR	KJR
ECN003811	29	MODIFIED DIMENSIONS	04-26-11	INY	BR	KJR
ECN002632	28	ADDED MODEL ZP49K5E-PFJ	01-28-11	INY	BR	KJR
ECN002564	27	ADDED MODEL ZP44K5E-TF7	11-29-10	PBM	BR	KJR
ECN002571	26	ADDED MODEL ZP49K5E-TF7	10-27-10	INY	MA	KJR
ECN001760	25	ADDED MODEL ZP44K5E-TFE	10-21-09	PAS	EC	KJR
ECN001833	24	ADDED MODEL ZP51K5E-TF7	09-08-09	PBM	EC	KJR
ECN001781	23	ADDED MODEL ZP34K5E-TFE	08-24-09	INY	EC	KJR
ECN001785	22	ADDED MODEL ZP44K5E-TFD	07-21-09	PAS	EC	KJR
ECN001050	21	ADDED MODEL ZP44K5E-PFV	05-05-09	TM	EC	KJR
ECN001294	20	ADDED MODEL ZP49K5E-TFD/TFE	03-20-09	PBM	EC	KJR
ECN001050	19	ADDED MODEL ZP44K5E-TFS	01-02-09	JPL	EC	KJR
ECN000756	18	ADDED MODEL ZP49K5E-TFS	11-10-08	PNA	EC	KJR
32-0306-064	17	REMOVED MODEL ZP51K5E-PFZ	11-02-08	INY	EC	KJR
32-0306-064	16	ADDED MODELS ZP51K5E-PFJ AND ZP51K5E-PFZ	10-22-08	INY	EC	KJR
ECN000756	15	ADDED ZP49K5E-PFV	07-23-08	INY	EC	KJR
32-0306-064	14	ADDED ZP54K5E-PFJ	07-08-08	PBM	MA	KJR
ECN001129	13	ADDED ZP38K5E-TFE	06-30-08	INY	EC	KJR
ECN000460	12	ADDED ZP39K5E-TFE	05-22-08	PBM	EC	KJR
ECN000144	11	REVISED DIMENSION WAS: 4x 246.0 MAX & 4x 18.35-19.50	12-26-07	SUP	EC	KJR
ECN000764	10	CHANGED DIMENSION WAS 4x 240.0-246.0 & 4x 19.00-19.50	10-29-07	SVK	EC	KJR
32-0806-095	9	ADDED ZP36K5E-TFE	10-03-07	SVK	EC	KJR
32-1105-002	8	ADDED ZP42K5E-PFJ	09-25-06	MA	CA	
32-1105-089	7	ADDED ZP42/51/54K5E-TFE	04-11-06	MA	CA	
32-1105-002	6	ADDED ZP36K5E-PFJ	03-29-06	MA	CA	
32-0905-008	5	REVISED & REDRAWN	09-01-05	CAT	JAS	
32-1104-066	4	DIM [0.749-0.767] WAS [0.75-0.761]	11-17-04	DLK	GD	
32-1103-065	3	CHANGED LOWER COVER AND ASSOC. DIMS.	10-12-04	LMW	GD	
32-1103-065	2	ADDED ZP34/38/42K5E	09-14-04	MA	LMW	
32-1103-065	1	ADDED ZP39 AND 36K5	06-29-04	LMW	LMW	
32-1103-065	0	RELEASED	05-10-04	LMW	GD	RST



INTERPRET PER ASME Y14.5M-1994 AND EMERSON CLIMATE TECHNOLOGIES, INC. DESIGN STANDARDS DS2002 DO NOT SCALE DRAWING
THIRD ANGLE PROJECTION
CRITICAL PRODUCT CHARACTERISTIC
UNLESS OTHERWISE SPECIFIED DIMENSIONS ARE MILLIMETER OR (1 INCH)
TOLERANCES:
1-PLACE \pm
2-PLACE \pm
ANGULAR \pm

24 THIS DRAWING AND INFORMATION CONTAINED HEREIN ARE THE EXCLUSIVE PROPERTY OF EMERSON CLIMATE TECHNOLOGIES, INC. AND SHALL BE RETURNED UPON DEMAND AND SHALL NOT BE REPRODUCED IN WHOLE OR IN PART, DISCLOSED TO ANYONE ELSE OR USED, WITHOUT THE WRITTEN CONSENT OF EMERSON CLIMATE TECHNOLOGIES, INC.
MATERIAL SPECIFICATION
DRAWN BY: LMW
DATE: 05-10-04
SUPERSEDES DWG. NO. / REV. NO.: G021-497-A005-00 / 0
SCALE: 3:4
DATE FORMAT: MM-DD-YY
DRAWING NUMBER: 497-2835-00
SHEET 1 OF 1
DWG SIZE: 5