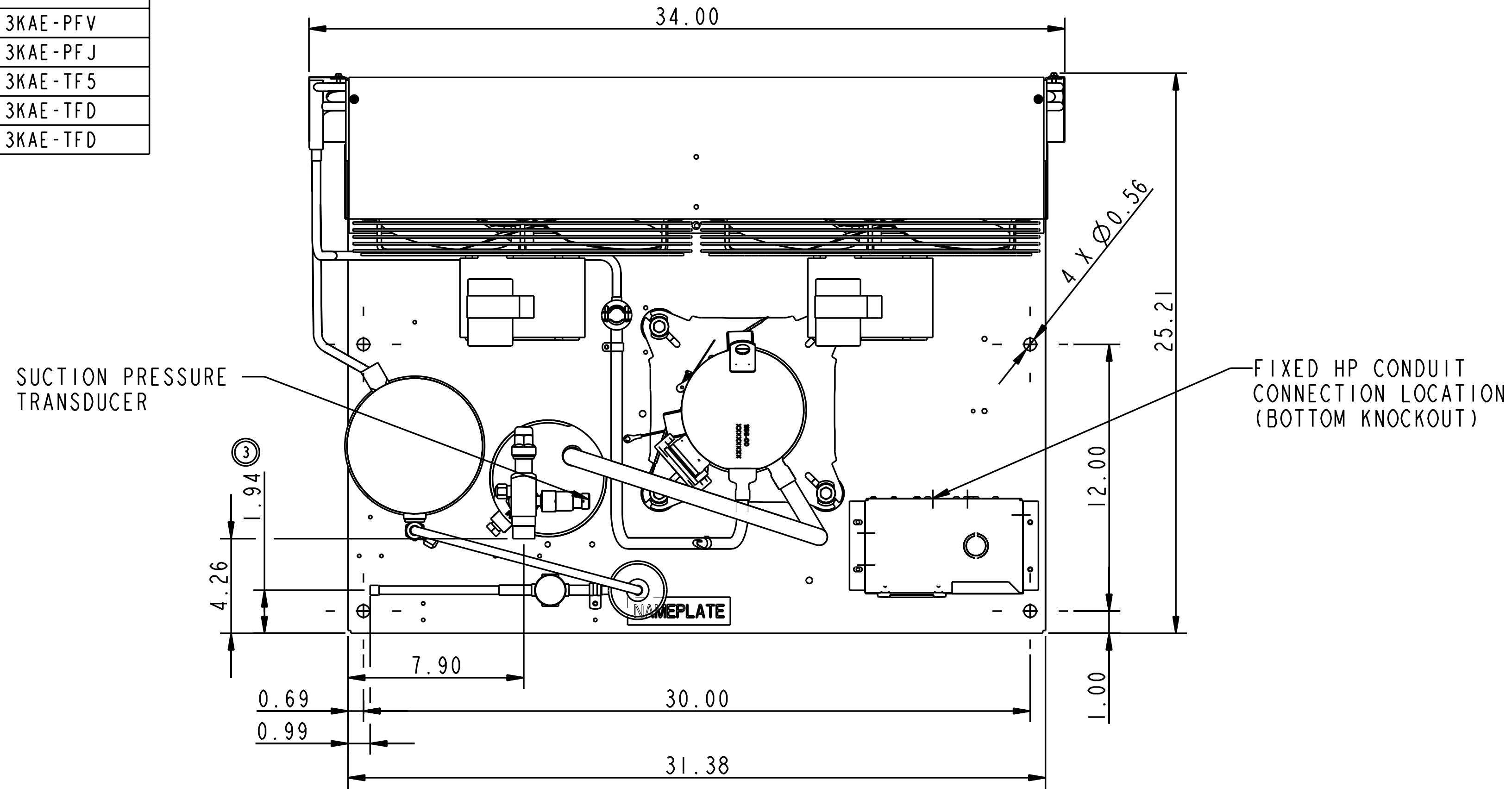
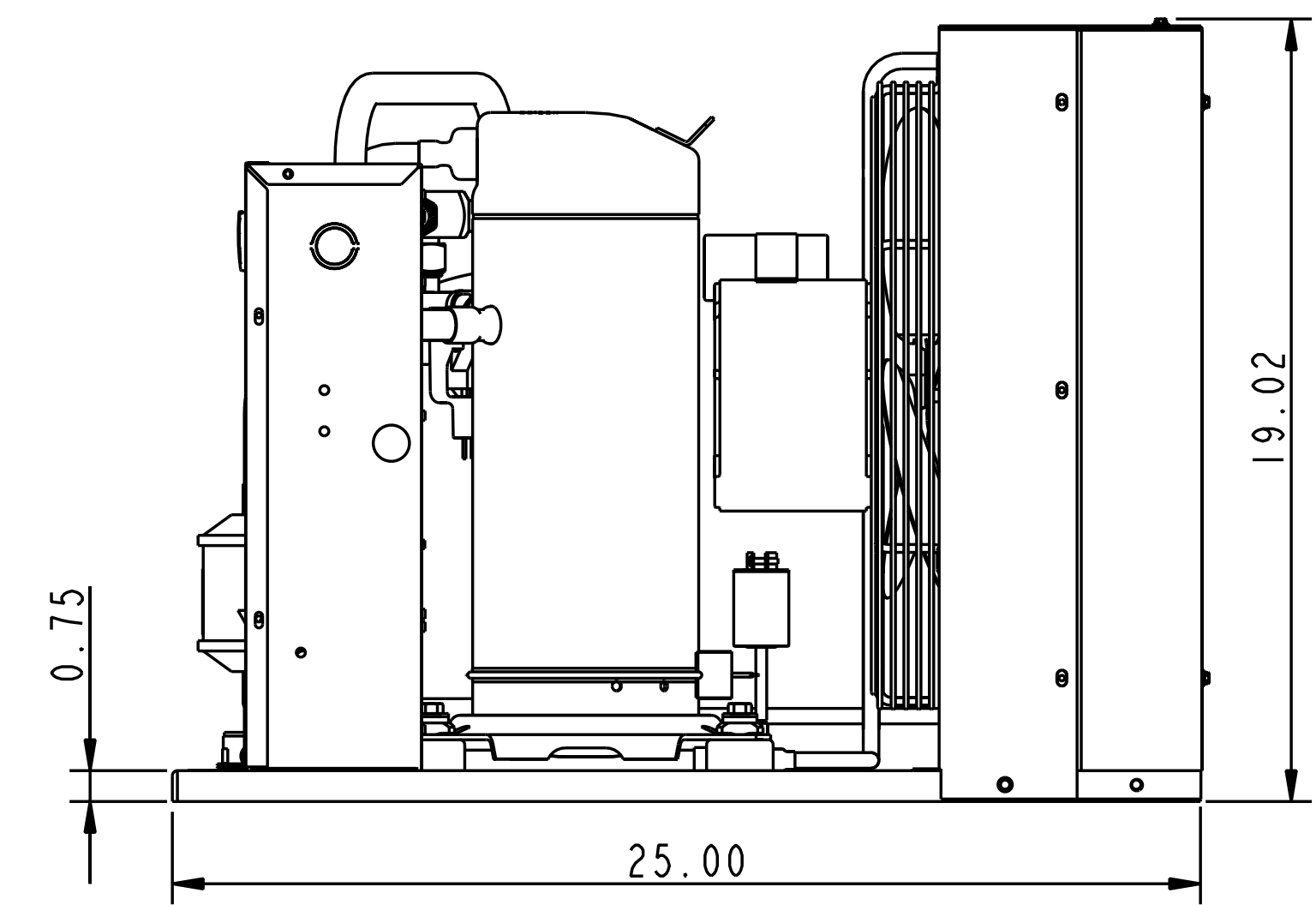
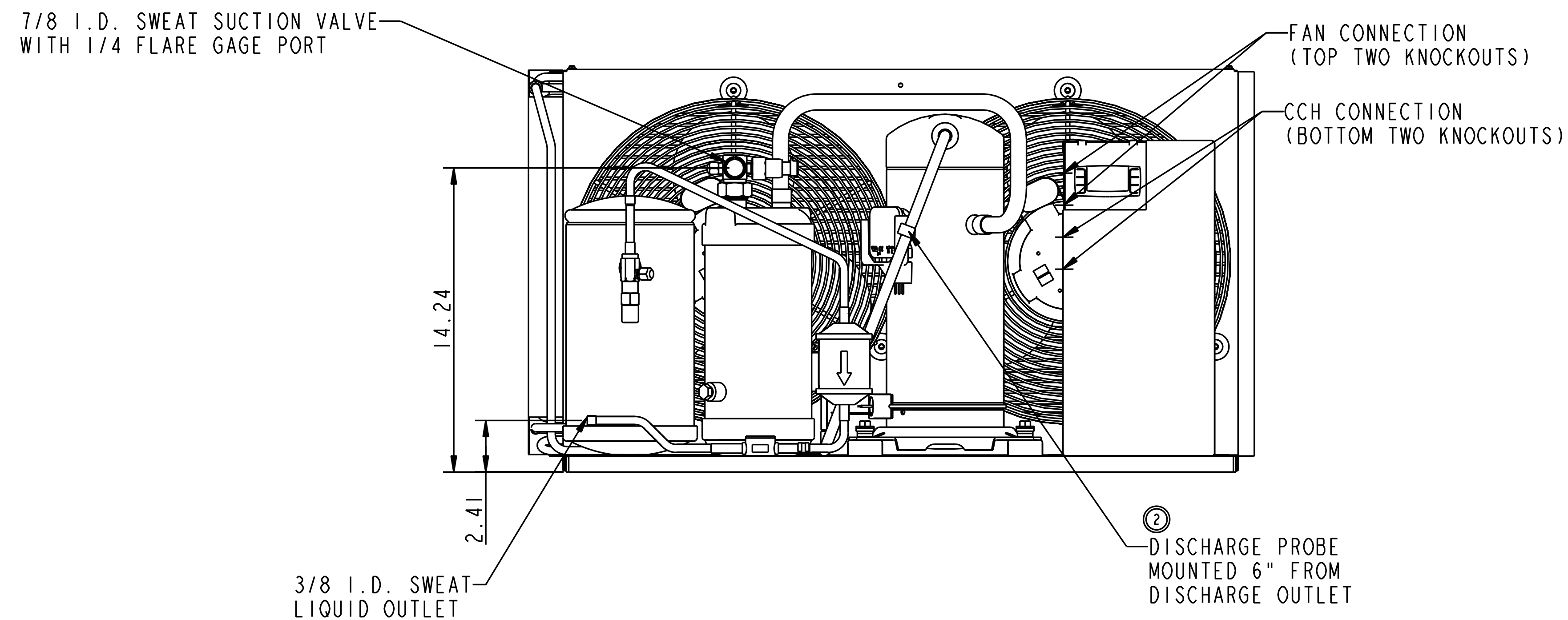


UNIT MODEL NUMBER	COMPRESSOR_MODEL_NO
FFAP-020Z-CFV-071	ZS13KAE-PFV
FFAP-020Z-CFZ-371	ZS13KAE-PFJ
FFAP-020Z-TFC-071	ZS13KAE-TF5
FFAP-020Z-TFD-071	ZS13KAE-TFD
FFAP-020Z-TFM-371	ZS13KAE-TFD



- NOTES:
- RECEIVER PUMPDOWN CAPACITY AT 90%:  
R-22 17.4 LBS.  
R-134A 17.6 LBS.  
R-404A 15.1 LBS.  
R-407A 16.6 LBS.  
R-407C 16.5 LBS.
  - ACCUMULATOR PUMPDOWN CAPACITY AT 90%:  
R-22 13.1 LBS.  
R-134A 13.3 LBS.  
R-404A 11.4 LBS.  
R-407A 12.5 LBS.  
R-407C 12.5 LBS.
  - ALL OPENINGS MUST BE CAPPED OR PLUGGED.



ENG NOTICE NO.	REV. NO.	REVISIONS	DATE	BY	CHKD	APPR
ECN007807	5	REVISED TUBE-DISCH. & CONTROL ASSM.	11-13-13	HPV	TR	
ECN006351	4	PICTORIALLY REVISED CLAMP	02-22-13	BAJ		
ECN006351	3	PICTORIALLY REVISED LIQUID ASSM	10-24-12	BAJ		
ECN006082	2	REVISED SUCTION VALVE & TUBE ACCU.	08-17-12	SA	TR	
ECN005519	1	REVISED BASE	04-18-12	UCM	TR	
ECN004829	0	RELEASED	01-06-12	SA	TR	

TITLE	DRAWING NUMBER	SHEET 1 OF 1	DWG SIZE
REF DWG -WELD UNIT ASSM	496-5717-00		4

EMERSON Climate Technologies  
**Copeland** brand products

INTERPRET PER ASME Y14.5M-1994 AND EMERSON CLIMATE TECHNOLOGIES, INC. DESIGN STANDARDS DS2002  
DO NOT SCALE DRAWING

THIRD ANGLE PROJECTION

CRITICAL PRODUCT CHARACTERISTIC

UNLESS OTHERWISE SPECIFIED DIMENSIONS ARE INCH OR (MILLIMETER)  
TOLERANCES:  
2-PLACE ±  
3-PLACE ±  
ANGULAR ±

6 CONFIDENTIALITY NOTICE  
THIS DRAWING AND INFORMATION CONTAINED HEREIN ARE THE EXCLUSIVE PROPERTY OF EMERSON CLIMATE TECHNOLOGIES, INC. AND SHALL BE RETURNED UPON DEMAND AND SHALL NOT BE REPRODUCED IN WHOLE OR IN PART, DISCLOSED TO ANYONE ELSE OR USED, WITHOUT THE WRITTEN CONSENT OF EMERSON CLIMATE TECHNOLOGIES, INC.

MATERIAL SPECIFICATION: SA  
DATE: 01-06-12  
SCALE: 1:4  
DATE FORMAT: MM-DD-YY