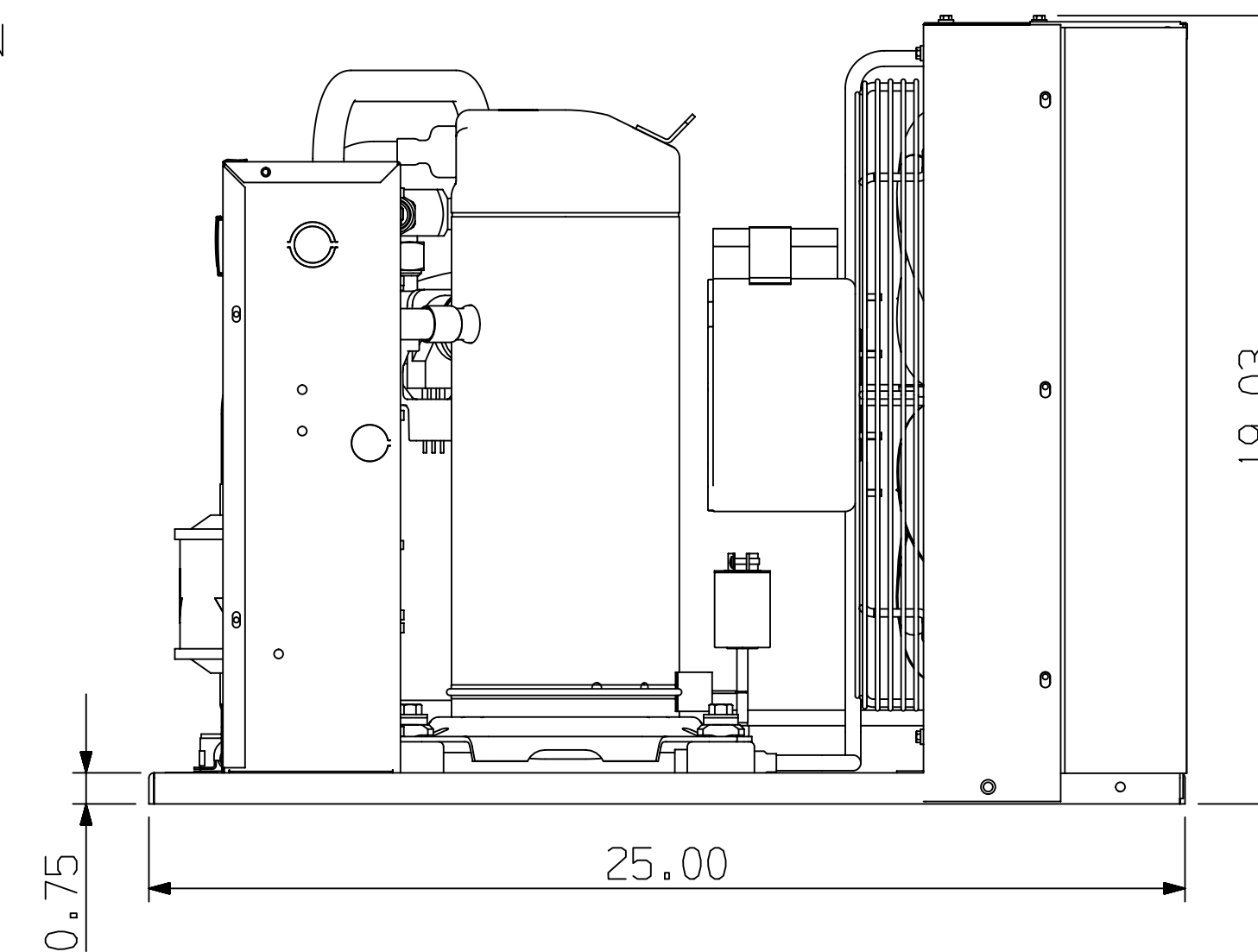
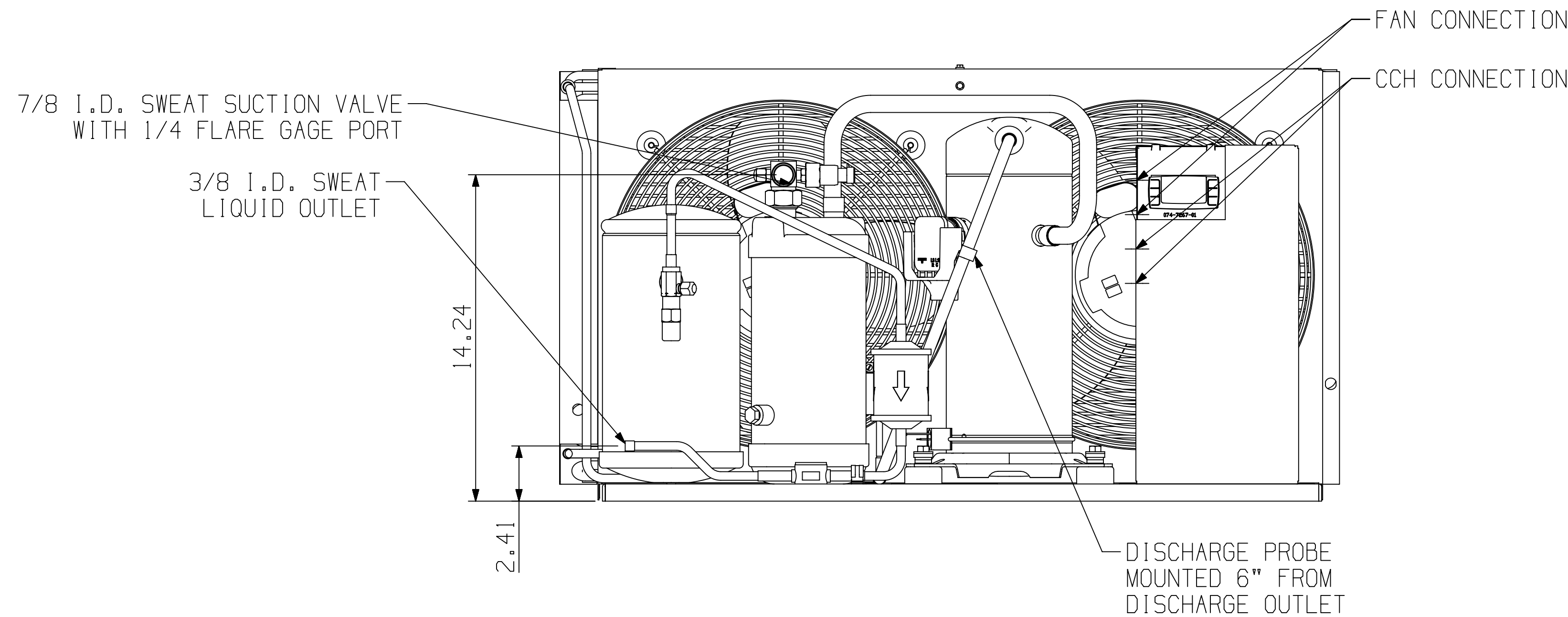
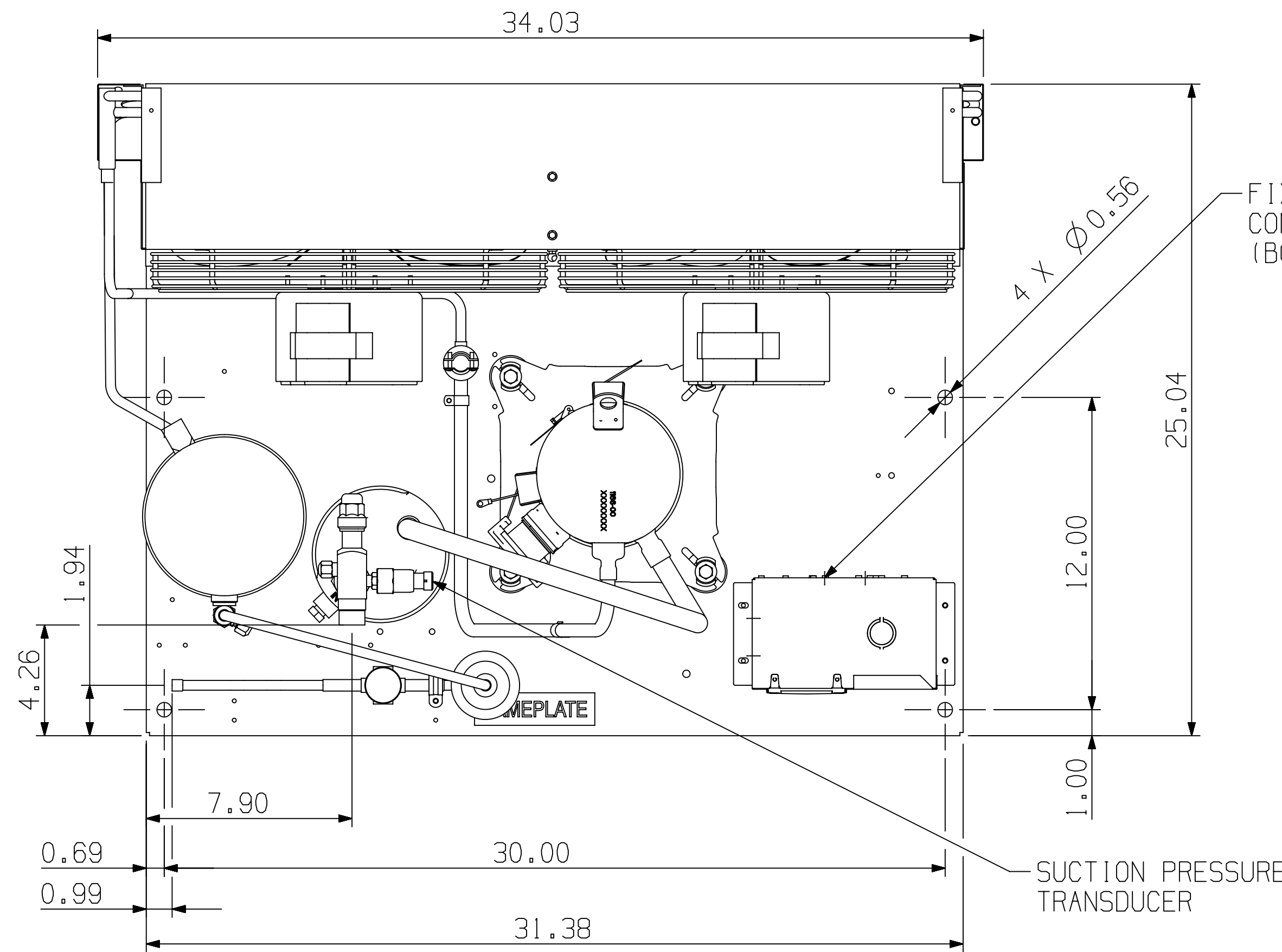


UNIT MODEL NUMBER	COMPRESSOR MODEL NO
FFAP-022Z-CFV-071	ZS15KAE-PFV
FFAP-022Z-CFZ-371	ZS15KAE-PFJ
FFAP-022Z-TFC-071	ZS15KAE-TF5
FFAP-022Z-TFD-071	ZS15KAE-TFD

NOTES:

- UNIT PUMPDOWN CAPACITY AT 90%
R-12 19.2 LBS
R-22 17.4 LBS
R-134a 17.6 LBS
R-404A 15.1 LBS
R-407A 16.6 LBS
R-407C 16.5 LBS
R-502 17.6 LBS
R-507 15.1 LBS
- ALL OPENINGS MUST BE CAPPED OR PLUGGED.



ENG NOTICE NO.	REV.NO.	REVISIONS	DATE	BY	CHKD	APPR
ECN100068	8	REDRAWN & REVISED NOTE 1	10-21-14	PHK	TR	
ECN005027	0	RELEASED	01-18-12	SA	TR	

CONFIDENTIALITY NOTICE			
THIS DRAWING AND INFORMATION CONTAINED HEREIN ARE THE EXCLUSIVE PROPERTY OF EMERSON CLIMATE TECHNOLOGIES, INC. AND SHALL BE RETURNED UPON DEMAND AND SHALL NOT BE REPRODUCED IN WHOLE OR IN PART, DISCLOSED TO ANYONE ELSE OR USED, WITHOUT THE WRITTEN CONSENT OF EMERSON CLIMATE TECHNOLOGIES, INC.			
MATERIAL SPECIFICATION	DRAWN BY PHK	SUPERSEDES DWG. NO. / REV. NO. 496-5719-00 / 7	
	DATE 10-21-14	SCALE 1:4	DATE FORMAT: MM-DD-YY
TITLE REF DWG -WELD UNIT ASSM	DRAWING NUMBER 496-5719-00	SHEET 1 OF 1	DWG 4 SIZE

EMERSON
Climate Technologies

Copeland
brand products

INTERPRET PER ASME
Y14.5M-1994 AND
EMERSON CLIMATE
TECHNOLOGIES, INC.
DESIGN STANDARDS DS2002

DO NOT SCALE DRAWING

THIRD ANGLE
PROJECTION

CRITICAL PRODUCT
CHARACTERISTICS

UNLESS OTHERWISE SPECIFIED
DIMENSIONS ARE INCH OR (MILLIMETER)
TOLERANCES:
1- PLACE ±
2- PLACE ±
ANGULAR ±