

## SUBMITTAL DATA: MXZ-3C30NA

### MULTI-INDOOR INVERTER HEAT-PUMP SYSTEM

Job Name:

System Reference:

Date:

**GENERAL FEATURES**

- Quiet Operation
- Optional base pan heater to prevent ice in drain pan
- Limited warranty: five years parts and seven years compressors


**ACCESSORIES**

- 3/8" x 1/2" Port Adapter (MAC-A454JP-E)
- 1/2" x 3/8" Port Adapter (MAC-A455JP-E)
- 1/2" x 5/8" Port Adapter (MAC-A456JP-E)
- 1/4" x 3/8" Port Adapter (PAC-493PI)
- 3/8" x 5/8" Port Adapter (PAC-SG76RJ-E)
- M-NET Adapter (PAC-IF01MNT-E)
- Base Heater (PAC-645BH-E)



Outdoor Unit: MXZ-3C24NA



(For data on specific indoor units, see the MXZ-C Technical and Service Manual.)

Specifications			Model Name
Unit Type			MXZ-3C30NA
Cooling* (Non-ducted / Ducted)	Rated Capacity	Btu/h	28,400 / 27,400
	Capacity Range	Btu/h	12,600-28,400 / 12,600-27,400
	Rated Total Input	W	2,680 / 2,860
Heating at 47°F* (Non-ducted / Ducted)	Rated Capacity	Btu/h	28,600 / 27,600
	Capacity Range	Btu/h	11,400-36,000 / 11,400-35,000
	Rated Total Input	W	2,150 / 2,220
Heating at 17°F* (Non-ducted/Ducted)	Rated Capacity	Btu/h	16,000 / 15,100
	Rated Total Input	W	2,120 / 2,140
Electrical Requirements	Power Supply	Voltage, Phase, Hertz	208 / 230V, 1-Phase, 60 Hz
	Recommended Fuse/Breaker Size	A	25
	MCA	A	22.1
Voltage	Indoor - Outdoor S1-S2	V	AC 208 / 230
	Indoor - Outdoor S2-S3	V	DC ±24
Compressor			INVERTER-driven Scroll Hermetic
Fan Motor (ECM)		F.L.A.	1.9
Sound Pressure Level	Cooling	dB(A)	52
	Heating		56
External Dimensions (H x W x D)		In (mm)	31-11/32 x 37-13/32 x 13 (796 x 950 x 330)
Net Weight		Lbs (kg)	135 (61)
External Finish			Munsell 3.0Y 7.8/1.1
Refrigerant Pipe Size O.D. — Eight Ports	Liquid (High Pressure)	In (mm)	1/4 (12.7)
	Gas (Low Pressure)		A: 1/2 (6.35) ; B,C: 3/8 (9.52)
Max. Refrigerant Line Length		Ft (m)	230 (70)
Max. Piping Length for Each Indoor Unit		Ft (m)	82 (25)
Max. Refrigerant Pipe Height Difference	If IDU is Above ODU	Ft (m)	49 (15)
	If IDU is Below ODU		49 (15)
Connection Method			Flared/Flared
Refrigerant			R410A

\* Rating Conditions per AHRI Standard:

 Cooling | Indoor: 80° F (27° C) DB / 67° F (19° C) WB  
 Cooling | Outdoor: 95° F (35° C) DB / 23.9° C (75° F) WB

 Heating at 47°F | Indoor: 70° F (21° C) DB / 60° F (16° C) WB  
 Heating at 47°F | Outdoor: 47° F (8° C) DB / 43° F (6° C) WB

 Heating at 17° F | Indoor: 70° F (21° C) DB  
 Heating at 17° F | Outdoor: 17° F (-8° C) DB / 15° F (-9° C) WB

# SPECIFICATIONS: MXZ-3C30NA, contd.

**Operating Range:**

Outdoor	
Cooling	14 to 115° F (-10 to 46° C) DB
Heating	5 to 65° F (-15 to 18° C) WB

**Energy Efficiencies:**

Indoor Unit Type	SEER	EER	HSPF	COP @ 47°F	COP @ 17°F
<b>Non-ducted (06 + 06 + 09)</b>	19.0	10.6	10.6	3.90	2.77
<b>Ducted and Non-ducted</b>	17.6	10.1	10.1	3.77	2.78
<b>Ducted (09 + 09 + 09)</b>	16.2	9.6	9.6	3.64	2.78

**Multi-zone Indoor/Outdoor Combination Table**

	MSZ-FH*	MSZ-GE*	MFZ*	MVZ*	SEZ-KD*	SLZ*	PCA (A24)*	PLA*	PEAD*
<b>MXZ-3C30NA</b>	OK	OK	OK	12,18,24 OK 30,36 NO	OK	OK	OK	18,24 OK 12,30 NO	24 OK 30, 36 NO

\* Refer to indoor unit submittal.

**Notes:**

- Minimum of two Indoor Units must be connected to the MXZ-3C30NA.
- Minimum installed capacity cannot be less than 12,000 Btu/h.
- System can operate with only one Indoor Unit turned on.
- May connect to any style indoor unit or combination.
- Information provided at 208/230V.  
Refer to the MXZ-C Technical & Service Manual for detailed specifications and additional information per Indoor Unit Combination.

**MVZ CONNECTION RULES:**

- Only 1 MVZ may be used on any system.
- When an MVZ is connected, total connected capacity must be 100% or less.
- When an MVZ is connected, no P-Series indoor units can be used (PCA, PLA, or PEAD).

Notes:

# MXZ-3C30NA OPERATIONAL PERFORMANCE

**DUCTED:**

Operational Performance for Indoor Unit Combinations (Unit A + Unit B + Unit C)	Cooling Capacity Range (Btu/h)			Power Usage Range (W)	Current (208/230V)
	Heating Capacity Range (Btu/h)				
	Unit A	Unit B	Unit C		
9	9000	0	0	TBD	
	10900	0	0		
12	12000	0	0		
	13600	0	0		
15	15000	0	0		
	18000	0	0		
18	17200	0	0		
	21600	0	0		
24	24000	0	0		
	26000	0	0		
9 + 9	9000	9000	0		
	10900	10900	0		
9 + 12	9000	12000	0		
	10500	14000	0		
9 + 15	9000	15000	0		
	10200	17000	0		
9 + 18	8733	17467	0		
	9133	18267	0		
9 + 24	7418	19782	0		
	7473	19927	0		
12 + 12	12000	12000	0		
	13600	13600	0		
12 + 15	11644	14556	0		
	12178	15222	0		
12 + 18	10880	16320	0		
	10960	16440	0		
12 + 24	9067	18133	0		
	9133	18267	0		
15 + 15	13600	13600	0		
	13700	13700	0		
15 + 18	12364	14836	0		
	12455	14945	0		
18 + 18	13600	13600	0		
	13700	13700	0		
9 + 9 + 9	9000	9000	9000		
	9133	9133	9133		
9 + 9 + 12	8220	8220	10960		
	8280	8280	11040		
9 + 9 + 15	7582	7582	12636		
	7582	7582	12636		
9 + 9 + 18	7050	7050	14100		
	7000	7000	14000		
9 + 12 + 12	7582	10109	10109		
	7582	10109	10109		
9 + 12 + 15	7050	9400	11750		
	7000	9333	11667		
12 + 12 + 12	9400	9400	9400		
	9333	9333	9333		

# MXZ-3C30NA OPERATIONAL PERFORMANCE, contd.

**NON-DUCTED:**

Operational Performance for Indoor Unit Combinations (Unit A + Unit B + Unit C)	Cooling Capacity Range (Btu/h)			Power Usage Range (W)	Current (208/230V)
	Heating Capacity Range (Btu/h)				
	Unit A	Unit B	Unit C		
6	6000	0	0	TBD	
	7400	0	0		
9	9000	0	0		
	11000	0	0		
12	12000	0	0		
	14400	0	0		
15	14000	0	0		
	18000	0	0		
18	17200	0	0		
	21600	0	0		
24	22500	0	0		
	27600	0	0		
6 + 6	6000	6000	0		
	7400	7400	0		
6 + 9	6000	9000	0		
	7360	11040	0		
6 + 12	6000	12000	0		
	7333	14667	0		
6 + 15	5714	14286	0		
	7257	18143	0		
6 + 18	5750	17250	0		
	6900	20700	0		
6 + 24	5440	21760	0		
	5520	22080	0		
9 + 9	9000	9000	0		
	11000	11000	0		
9 + 12	8571	11429	0		
	10886	14514	0		
9 + 15	8625	14375	0		
	10350	17250	0		
9 + 18	8600	17200	0		
	9200	18400	0		
9 + 24	7418	19782	0		
	7527	20073	0		
12 + 12	11500	11500	0		
	13800	13800	0		
12 + 15	11467	14333	0		
	12267	15333	0		
12 + 18	10880	16320	0		
	11040	16560	0		
12 + 24	9067	18133	0		
	9200	18400	0		
15 + 15	13600	13600	0		
	13800	13800	0		
15 + 18	12364	14836	0		
	12545	15055	0		
18 + 18	13600	13600	0		
	13800	13800	0		
6 + 6 + 6	6000	6000	6000		
	7400	7400	7400		
6 + 6 + 9	6000	6000	9000		
	7371	7371	11057		
6 + 6 + 12	6000	6000	12000		
	7100	7100	14200		
6 + 6 + 15	5778	5778	14444		
	6311	6311	15778		
6 + 6 + 18	5680	5680	17040		
	5720	5720	17160		
6 + 6 + 24	5000	5000	20000		
	5000	5000	20000		

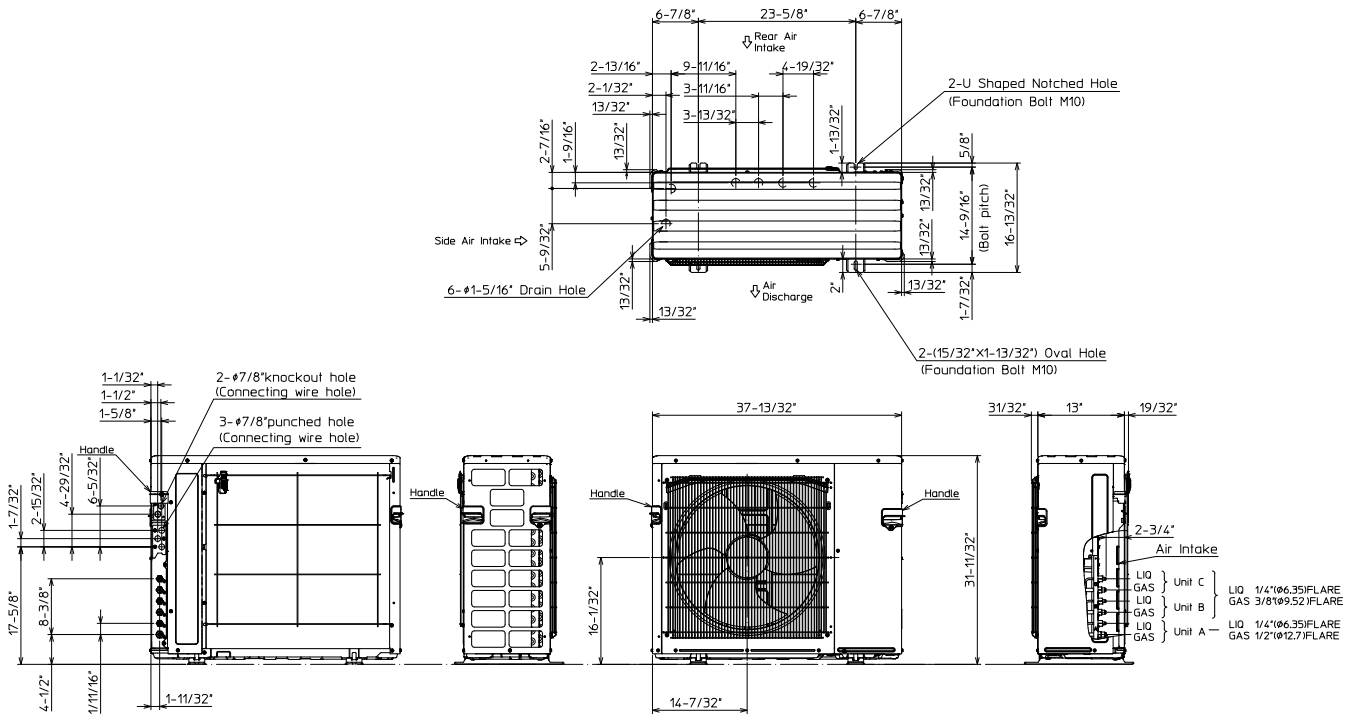
# MXZ-3C30NA OPERATIONAL PERFORMANCE, contd.

**NON-DUCTED:**

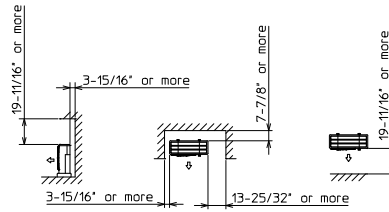
Operational Performance for Indoor Unit Combinations (Unit A + Unit B + Unit C)	Cooling Capacity Range (Btu/h)			Power Usage Range (W)	Current (208/230V)
	Heating Capacity Range (Btu/h)				
	Unit A	Unit B	Unit C		
6 + 9 + 9	6000	9000	9000	TBD	
	7100	10650	10650		
6 + 9 + 12	5778	8667	11556		
	6311	9467	12622		
6 + 9 + 15	5680	8520	14200		
	5720	8580	14300		
6 + 9 + 18	5382	8073	16145		
	5382	8073	16145		
6 + 12 + 12	5680	11360	11360		
	5720	11440	11440		
6 + 12 + 15	5382	10764	13455		
	5382	10764	13455		
6 + 12 + 18	5000	10000	15000		
	5000	10000	15000		
6 + 15 + 15	5000	12500	12500		
	5000	12500	12500		
9 + 9 + 9	8667	8667	8667		
	9467	9467	9467		
9 + 9 + 12	8520	8520	11360		
	8580	8580	11440		
9 + 9 + 15	8073	8073	13455		
	8073	8073	13455		
9 + 9 + 18	7500	7500	15000		
	7500	7500	15000		
9 + 12 + 12	8073	10764	10764		
	8073	10764	10764		
9 + 12 + 15	7500	10000	12500		
	7500	10000	12500		
12 + 12 + 12	10000	10000	10000		
	10000	10000	10000		

# DIMENSIONS: MXZ-3C30NA

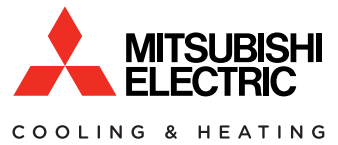
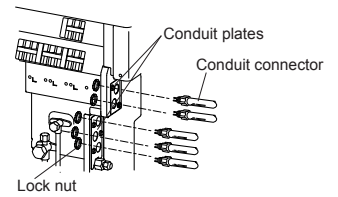
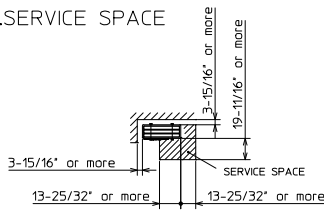
Unit: inch (mm)



## 1. FREE SPACE



## 2. SERVICE SPACE



1340 Satellite Boulevard  
 Suwanee, GA 30024  
 Toll Free: 800-433-4822  
 www.mehvac.com

FORM# MXZ-3C30NA for Multiple Indoor Unit Styles - 201505

Specifications are subject to change without notice.  
 © 2015 Mitsubishi Electric US, Inc.