

SUBMITTAL DATA: MXZ-4C36NA

MULTI-INDOOR INVERTER HEAT-PUMP SYSTEM

Job Name:

System Reference:

Date:

GENERAL FEATURES

- Quiet Operation
- Optional base pan heater to prevent ice in drain pan
- Limited warranty: five years parts and seven years compressors

ACCESSORIES

- Distribution Pipe for Flare Connection (MSDD-50AR; necessary for installing two branch boxes)
- Distribution Pipe for Brazed Connection (MSDD-50BR; necessary for installing two branch boxes)
- 3/8" x 1/2" Port Adapter (MAC-A454JP)
- 1/2" x 3/8" Port Adapter (MAC-A455JP)
- 1/2" x 5/8" Port Adapter (MAC-A456JP)
- 1/4" x 3/8" Port Adapter (PAC-493PI)
- 3/8" x 5/8" Port Adapter (PAC-SG76RJ)
- M-NET Adapter (PAC-IF01MNT-E)
- Base Heater (PAC-645BH-E)



Outdoor Unit: MXZ-4C36NA




(For data on specific indoor units, see the MXZ-C Technical and Service Manual.)

Specifications			Model Name
Unit Type			MXZ-4C36NA
Cooling* (Non-ducted / Ducted)	Rated Capacity	Btu/h	35,400 / 34,400
	Capacity Range	Btu/h	12,600-36,400 / 12,600-34,800
	Rated Total Input	W	3,760 / 3,940
Heating at 47°F* (Non-ducted / Ducted)	Rated Capacity	Btu/h	36,000 / 34,400
	Capacity Range	Btu/h	11,400-43,000 / 11,400-41,400
	Rated Total Input	W	3,020 / 3,100
Heating at 17°F* (Non-ducted/Ducted)	Rated Capacity	Btu/h	22,200 / 20,300
	Rated Total Input	W	3,340 / 3,450
Electrical Requirements	Power Supply	Voltage, Phase, Hertz	208 / 230V, 1-Phase, 60 Hz
	Recommended Fuse/Breaker Size	A	25
	MCA	A	22.1
Voltage	Indoor - Outdoor S1-S2	V	AC 208 / 230
	Indoor - Outdoor S2-S3	V	DC ±24
Compressor			INVERTER-driven Scroll Hermetic
Fan Motor (ECM)		F.L.A.	1.9
Sound Pressure Level	Cooling		54
	Heating	dB(A)	56
External Dimensions (H x W x D)		In (mm)	31-11/32 x 37-13/32 x 13 (796 x 950 x 330)
Net Weight		Lbs (kg)	137 (62)
External Finish			Munsell 3.0Y 7.8/1.1
Refrigerant Pipe Size O.D. — Eight Ports	Liquid (High Pressure)	In (mm)	1/4 (12.7)
	Gas (Low Pressure)		A: 1/2 (6.35) ; B,C,D: 3/8 (9.52)
Max. Refrigerant Line Length		Ft (m)	230 (70)
Max. Piping Length for Each Indoor Unit		Ft (m)	82 (25)
Max. Refrigerant Pipe Height Difference	If IDU is Above ODU	Ft (m)	49 (15)
	If IDU is Below ODU	Ft (m)	49 (15)
Connection Method			Flared/Flared
Refrigerant			R410A

* Rating Conditions per AHRI Standard:

 Cooling | Indoor: 80° F (27° C) DB / 67° F (19° C) WB
 Cooling | Outdoor: 95° F (35° C) DB / 23.9° C (75° F) WB

 Heating at 47°F | Indoor: 70° F (21° C) DB / 60° F (16° C) WB
 Heating at 47°F | Outdoor: 47° F (8° C) DB / 43° F (6° C) WB

 Heating at 17° F | Indoor: 70° F (21° C) DB
 Heating at 17° F | Outdoor: 17° F (-8° C) DB / 15° F (-9° C) WB

SPECIFICATIONS: MXZ-4C36NA, contd.

Operating Range:

	Outdoor
Cooling	14 to 115° F (-10 to 46° C) DB
Heating	5 to 65° F (-15 to 18° C) WB

Energy Efficiencies:

Indoor Unit Type	SEER	EER	HSPF	COP @ 47°F	COP @ 17°F
Non-ducted	19.2	9.4	11.0	3.50	2.67
Ducted and Non-ducted	17.6	9.05	10.4	3.38	2.61
Ducted	16.0	8.7	9.8	3.25	2.54

Multi-zone Indoor/Outdoor Combination Table

	MSZ-FH*	MSZ-GE*	MFZ*	MVZ*	SEZ-KD*	SLZ*	PCA (A24)*	PLA*	PEAD*
MXZ-4C36NA	OK	OK	OK	12,18,24 OK 30, 36 NO	OK	OK	NO	18, 24 OK 30, 36 NO	24 OK 30, 36 NO

* Refer to indoor unit submittal.

Notes:

- Minimum of two Indoor Units must be connected to the MXZ-4C36NA.
- Minimum installed capacity cannot be less than 12,000 Btu/h.
- System can operate with only one Indoor Unit turned on.
- May connect to any style indoor unit or combination.
- Information provided at 208/230V.
Refer to the MXZ-C Technical & Service Manual for detailed specifications and additional information per Indoor Unit Combination.

MVZ CONNECTION RULES:

- Only 1 MVZ may be used on any system.
- When an MVZ is connected, total connected capacity must be 100% or less.
- When an MVZ is connected, no P-Series indoor units can be used (PCA, PLA, or PEAD).

Notes:

MXZ-4C36NA OPERATIONAL PERFORMANCE

DUCTED:

Operational Performance for Indoor Unit Combinations (Unit A + Unit B + Unit C+ Unit D)	Cooling Capacity Range (Btu/h)				Power Usage Range (W)	Current (208/230V)
	Heating Capacity Range (Btu/h)					
	Unit A	Unit B	Unit C	Unit D		
9	9000	0	0	0	TBD	
	10900	0	0	0		
12	12000	0	0	0		
	13600	0	0	0		
15	15000	0	0	0		
	18000	0	0	0		
18	17200	0	0	0		
	21600	0	0	0		
24	24000	0	0	0		
	26000	0	0	0		
9 + 9	9000	9000	0	0		
	10900	10900	0	0		
9 + 12	9000	12000	0	0		
	10500	14000	0	0		
9 + 15	9000	15000	0	0		
	10200	17000	0	0		
9 + 18	8733	17467	0	0		
	9333	18667	0	0		
9 + 24	7636	20364	0	0		
	7636	20364	0	0		
12 + 12	12000	12000	0	0		
	13600	13600	0	0		
12 + 15	11644	14556	0	0		
	12444	15556	0	0		
12 + 18	11200	16800	0	0		
	11200	16800	0	0		
12 + 24	9333	18667	0	0		
	9333	18667	0	0		
15 + 15	14000	14000	0	0		
	14000	14000	0	0		
15 + 18	12727	15273	0	0		
	12727	15273	0	0		
18 + 18	14000	14000	0	0		
	14000	14000	0	0		
9 + 9 + 9	9000	9000	9000	0		
	10900	10900	10900	0		
9 + 9 + 12	9000	9000	12000	0		
	9810	9810	13080	0		
9 + 9 + 15	8727	8727	14545	0		
	8918	8918	14864	0		
9 + 9 + 18	8000	8000	16000	0		
	8175	8175	16350	0		
9 + 9 + 24	6857	6857	18286	0		
	7007	7007	18686	0		
9 + 12 + 12	8727	11636	11636	0		
	8918	11891	11891	0		
9 + 12 + 15	8000	10667	13333	0		
	8175	10900	13625	0		
9 + 12 + 18	7385	9846	14769	0		
	7546	10062	15092	0		
9 + 15 + 15	7385	12308	12308	0		
	7546	12577	12577	0		
9 + 15 + 18	6857	11429	13714	0		
	7007	11679	14014	0		
12 + 12 + 12	10667	10667	10667	0		
	10900	10900	10900	0		
12 + 12 + 15	9846	9846	12308	0		
	10062	10062	12577	0		
12 + 12 + 18	9143	9143	13714	0		
	9343	9343	14014	0		

MXZ-4C36NA OPERATIONAL PERFORMANCE, contd.

DUCTED:

Operational Performance for Indoor Unit Combinations (Unit A + Unit B + Unit C+ Unit D)	Cooling Capacity Range (Btu/h)				Power Usage Range (W)	Current (208/230V)
	Heating Capacity Range (Btu/h)					
	Unit A	Unit B	Unit C	Unit D		
12 + 15 + 15	9143	11429	11429	0	TBD	
	9343	11679	11679	0		
9 + 9 + 9 + 9	8600	8600	8600	8600		
	8600	8600	8600	8600		
9 + 9 + 9 + 12	8031	8031	8031	10708		
	8031	8031	8031	10708		
9 + 9 + 9 + 15	7543	7543	7543	12571		
	7543	7543	7543	12571		
9 + 9 + 12 + 12	7543	7543	10057	10057		
	7543	7543	10057	10057		

NON-DUCTED:

Operational Performance for Indoor Unit Combinations (Unit A + Unit B + Unit C+ Unit D)	Cooling Capacity Range (Btu/h)				Power Usage Range (W)	Current (208/230V)
	Heating Capacity Range (Btu/h)					
	Unit A	Unit B	Unit C	Unit D		
6	6000	0	0	0	TBD	
	7400	0	0	0		
9	9000	0	0	0		
	11000	0	0	0		
12	12000	0	0	0		
	14400	0	0	0		
15	14000	0	0	0		
	18000	0	0	0		
18	17200	0	0	0		
	21600	0	0	0		
24	22500	0	0	0		
	27600	0	0	0		
6 + 6	6000	6000	0	0		
	7400	7400	0	0		
6 + 9	6000	9000	0	0		
	7360	11040	0	0		
6 + 12	6000	12000	0	0		
	7333	14667	0	0		
6 + 15	5714	14286	0	0		
	7257	18143	0	0		
6 + 18	5750	17250	0	0		
	7000	21000	0	0		
6 + 24	5600	22400	0	0		
	5600	22400	0	0		
9 + 9	9000	9000	0	0		
	11000	11000	0	0		
9 + 12	8571	11429	0	0		
	10886	14514	0	0		
9 + 15	8625	14375	0	0		
	10500	17500	0	0		
9 + 18	8600	17200	0	0		
	9333	18667	0	0		
9 + 24	7636	20364	0	0		
	7636	20364	0	0		
12 + 12	11500	11500	0	0		
	14000	14000	0	0		
12 + 15	11467	14333	0	0		
	12444	15556	0	0		
12 + 18	11200	16800	0	0		
	11200	16800	0	0		
12 + 24	9333	18667	0	0		
	9333	18667	0	0		
15 + 15	14000	14000	0	0		
	14000	14000	0	0		

MXZ-4C36NA OPERATIONAL PERFORMANCE, contd.

NON-DUCTED:

Operational Performance for Indoor Unit Combinations (Unit A + Unit B + Unit C+ Unit D)	Cooling Capacity Range (Btu/h)				Power Usage Range (W)	Current (208/230V)
	Heating Capacity Range (Btu/h)					
	Unit A	Unit B	Unit C	Unit D		
15 + 18	12727	15273	0	0	TBD	
	12727	15273	0	0		
18 + 18	14000	14000	0	0		
	14000	14000	0	0		
6 + 6 + 6	6000	6000	6000	0		
	7400	7400	7400	0		
6 + 6 + 9	6000	6000	9000	0		
	7371	7371	11057	0		
6 + 6 + 12	6000	6000	12000	0		
	7300	7300	14600	0		
6 + 6 + 15	5778	5778	14444	0		
	7289	7289	18222	0		
6 + 6 + 18	5680	5680	17040	0		
	6560	6560	19680	0		
6 + 6 + 24	5333	5333	21333	0		
	5467	5467	21867	0		
6 + 9 + 9	6000	9000	9000	0		
	7300	10950	10950	0		
6 + 9 + 12	5778	8667	11556	0		
	7289	10933	14578	0		
6 + 9 + 15	5680	8520	14200	0		
	6560	9840	16400	0		
6 + 9 + 18	5818	8727	17455	0		
	5964	8945	17891	0		
6 + 9 + 24	4923	7385	19692	0		
	5046	7569	20185	0		
6 + 12 + 12	5680	11360	11360	0		
	6560	13120	13120	0		
6 + 12 + 15	5818	11636	14545	0		
	5964	11927	14909	0		
6 + 12 + 18	5333	10667	16000	0		
	5467	10933	16400	0		
6 + 12 + 24	4571	9143	18286	0		
	4686	9371	18743	0		
6 + 15 + 15	5333	13333	13333	0		
	5467	13667	13667	0		
6 + 15 + 18	4923	12308	14769	0		
	5046	12615	15138	0		
6 + 18 + 18	4571	13714	13714	0		
	4686	14057	14057	0		
9 + 9 + 9	8667	8667	8667	0		
	10933	10933	10933	0		
9 + 9 + 12	8520	8520	11360	0		
	9840	9840	13120	0		
9 + 9 + 15	8727	8727	14545	0		
	8945	8945	14909	0		
9 + 9 + 18	8000	8000	16000	0		
	8200	8200	16400	0		
9 + 9 + 24	6857	6857	18286	0		
	7029	7029	18743	0		
9 + 12 + 12	8727	11636	11636	0		
	8945	11927	11927	0		
9 + 12 + 15	8000	10667	13333	0		
	8200	10933	13667	0		
9 + 12 + 18	7385	9846	14769	0		
	7569	10092	15138	0		
9 + 15 + 15	7385	12308	12308	0		
	7569	12615	12615	0		
9 + 15 + 18	6857	11429	13714	0		
	7029	11714	14057	0		

MXZ-4C36NA OPERATIONAL PERFORMANCE, contd.

NON-DUCTED:

Operational Performance for Indoor Unit Combinations (Unit A + Unit B + Unit C+ Unit D)	Cooling Capacity Range (Btu/h)				Power Usage Range (W)	Current (208/230V)
	Heating Capacity Range (Btu/h)					
	Unit A	Unit B	Unit C	Unit D		
12 + 12 + 12	10667	10667	10667	0	TBD	
	10933	10933	10933	0		
12 + 12 + 15	9846	9846	12308	0		
	10092	10092	12615	0		
12 + 12 + 18	9143	9143	13714	0		
	9371	9371	14057	0		
12 + 15 + 15	9143	11429	11429	0		
	9371	11714	11714	0		
6 + 6 + 6 + 6	6000	6000	6000	6000		
	7400	7400	7400	7400		
6 + 6 + 6 + 9	6000	6000	6000	9000		
	7378	7378	7378	11067		
6 + 6 + 6 + 12	6000	6000	6000	12000		
	7160	7160	7160	14320		
6 + 6 + 6 + 15	5818	5818	5818	14545		
	6509	6509	6509	16273		
6 + 6 + 6 + 18	5900	5900	5900	17700		
	6000	6000	6000	18000		
6 + 6 + 6 + 24	5143	5143	5143	20571		
	5143	5143	5143	20571		
6 + 6 + 9 + 9	6000	6000	9000	9000		
	7160	7160	10740	10740		
6 + 6 + 9 + 12	5818	5818	8727	11636		
	6509	6509	9764	13018		
6 + 6 + 9 + 15	5900	5900	8850	14750		
	6000	6000	9000	15000		
6 + 6 + 9 + 18	5538	5538	8308	16615		
	5538	5538	8308	16615		
6 + 6 + 12 + 12	5900	5900	11800	11800		
	6000	6000	12000	12000		
6 + 6 + 12 + 15	5538	5538	11077	13846		
	5538	5538	11077	13846		
6 + 6 + 12 + 18	5143	5143	10286	15429		
	5143	5143	10286	15429		
6 + 6 + 15 + 15	5143	5143	12857	12857		
	5143	5143	12857	12857		
6 + 9 + 9 + 9	5818	8727	8727	8727		
	6509	9764	9764	9764		
6 + 9 + 9 + 12	5900	8850	8850	11800		
	6000	9000	9000	12000		
6 + 9 + 9 + 15	5538	8308	8308	13846		
	5538	8308	8308	13846		
6 + 9 + 9 + 18	5143	7714	7714	15429		
	5143	7714	7714	15429		
6 + 9 + 12 + 12	5538	8308	11077	11077		
	5538	8308	11077	11077		
6 + 9 + 12 + 15	5143	7714	10286	12857		
	5143	7714	10286	12857		
6 + 12 + 12 + 12	5143	10286	10286	10286		
	5143	10286	10286	10286		
9 + 9 + 9 + 9	8850	8850	8850	8850		
	9000	9000	9000	9000		
9 + 9 + 9 + 12	8308	8308	8308	11077		
	8308	8308	8308	11077		
9 + 9 + 9 + 15	7714	7714	7714	12857		
	7714	7714	7714	12857		
9 + 9 + 12 + 12	7714	7714	10286	10286		
	7714	7714	10286	10286		
6 + 6 + 12 + 12	6000	6000	12000	12000		
	7500	7500	15000	15000		

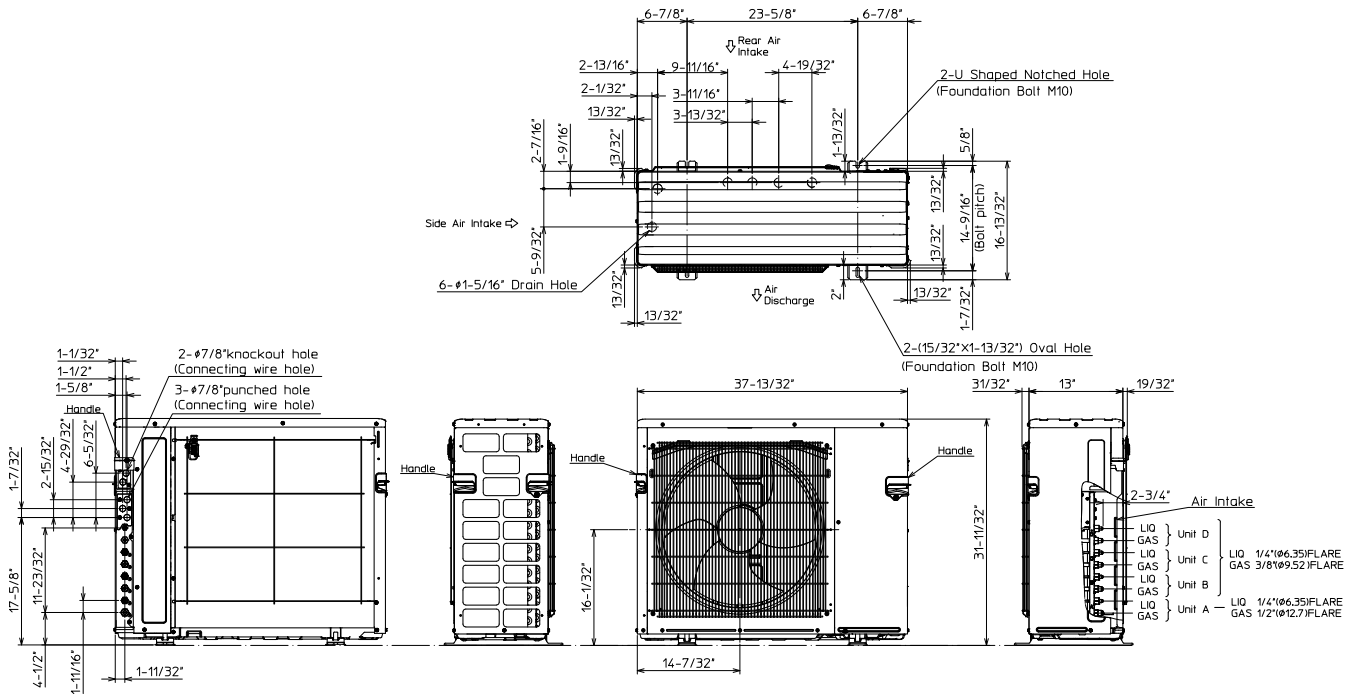
MXZ-4C36NA OPERATIONAL PERFORMANCE, contd.

NON-DUCTED:

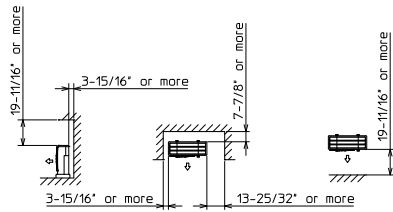
Operational Performance for Indoor Unit Combinations (Unit A + Unit B + Unit C+ Unit D)	Cooling Capacity Range (Btu/h)				Power Usage Range (W)	Current (208/230V)
	Heating Capacity Range (Btu/h)					
	Unit A	Unit B	Unit C	Unit D		
6 + 6 + 12 + 15	5538	5538	11077	13846	TBD	
	6923	6923	13846	17308		
6 + 6 + 12 + 18	5143	5143	10286	15429		
	6429	6429	12857	19286		
6 + 6 + 15 + 15	5143	5143	12857	12857		
	6429	6429	16071	16071		
6 + 6 + 15 + 18	4800	4800	12000	14400		
	6000	6000	15000	18000		
6 + 9 + 9 + 9	6000	9000	9000	9000		
	7509	11264	11264	11264		
6 + 9 + 9 + 12	6000	9000	9000	12000		
	7500	11250	11250	15000		
6 + 9 + 9 + 15	5538	8308	8308	13846		
	6923	10385	10385	17308		
6 + 9 + 9 + 18	5143	7714	7714	15429		
	6429	9643	9643	19286		
6 + 9 + 12 + 12	5538	8308	11077	11077		
	6923	10385	13846	13846		
6 + 9 + 12 + 15	5143	7714	10286	12857		
	6429	9643	12857	16071		
6 + 9 + 12 + 18	4800	7200	9600	14400		
	6000	9000	12000	18000		
6 + 9 + 15 + 15	4800	7200	12000	12000		
	6000	9000	15000	15000		
6 + 12 + 12 + 12	5143	10286	10286	10286		
	6429	12857	12857	12857		
6 + 12 + 12 + 15	4800	9600	9600	12000		
	6000	12000	12000	15000		
9 + 9 + 9 + 9	9000	9000	9000	9000		
	11250	11250	11250	11250		
9 + 9 + 9 + 12	8308	8308	8308	11077		
	10385	10385	10385	13846		
9 + 9 + 9 + 15	7714	7714	7714	12857		
	9643	9643	9643	16071		
9 + 9 + 9 + 18	7200	7200	7200	14400		
	9000	9000	9000	18000		
9 + 9 + 12 + 12	7714	7714	10286	10286		
	9643	9643	12857	12857		
9 + 9 + 12 + 15	7200	7200	9600	12000		
	9000	9000	12000	15000		
9 + 12 + 12 + 12	7200	9600	9600	9600		
	9000	12000	12000	12000		

DIMENSIONS: MXZ-4C36NA

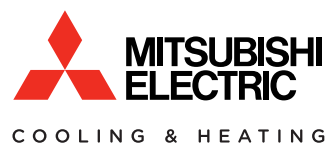
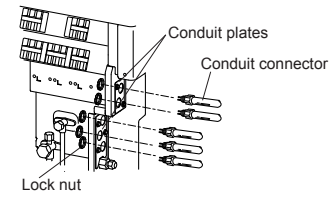
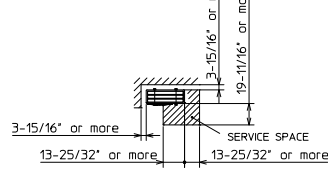
Unit: inch (mm)



1.FREE SPACE



2.SERVICE SPACE



1340 Satellite Boulevard
 Suwanee, GA 30024
 Toll Free: 800-433-4822
 www.mehvac.com

FORM# MXZ-4C36NA for Multiple Indoor Unit Styles - 201505

Specifications are subject to change without notice.
 © 2015 Mitsubishi Electric US, Inc.