

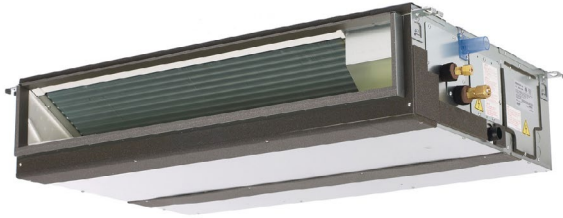
PEAD-A09AA7 9,000 BTU/H HORIZONTAL MID STATIC DUCTED



Job Name:

System Reference:

Date:



GENERAL FEATURES

- Unobtrusive ceiling-concealed design for short-run ductwork
- Wide ranging external static pressure (0.14-0.60 in. WG)
- Built-in condensate lift mechanism (up to 27'-9/16")
- Auto fan speed mode
- Optional FB Series filter boxes for easy access and service
- Ideal for residential homes, retail shopping centers, larger classrooms, office complexes, conference rooms, ballrooms, fitness centers, and more
- Multiple control options available:
 - kumo cloud® smart device app for remote access
 - Third-party interface options
 - Wired or wireless controllers

| Specifications | | System | |
|---------------------------------|---|---------------------|---|
| Unit Type | | PEAD-A09AA7 | |
| Cooling Capacity ^{1,3} | BTU/H | 9,000 | |
| Heating Capacity ^{2,3} | BTU/H | 10,000 | |
| Electrical | Voltage, Phase, Frequency | 208/230, 1, 60 | |
| | Guaranteed Voltage Range | V AC | 198- 253V |
| | Voltage: Indoor - Outdoor, S1-S2 | V AC | 208/230 |
| | Voltage: Indoor - Outdoor, S2-S3 | V DC | 24 |
| | Short-circuit Current Rating [SCCR] | kA | 5 |
| Indoor Unit | MCA | A | 1.45 |
| | Fan Motor Full Load Amperage | A | 1.16 |
| | Fan Motor Output | W | 85 |
| | Airflow Rate at Cooling, Dry | CFM | 282-318-353 |
| | Airflow Rate at Cooling, Wet | CFM | 254-286-318 |
| | Airflow Rate at Heating, Dry | CFM | 282-318-353 |
| | Sound Pressure Level [Cooling] | dB[A] | 24-26-28 |
| | Sound Pressure Level [Heating] | dB[A] | 24-26-28 |
| | External Static Pressure | in.WG | 0.14-0.2-0.28-0.4-0.6 |
| | Drain Pipe Size | In. [mm] | 1-1/4 [32] |
| | Condensate Lift Mechanism, Maximum Distance | In. [mm] | 279/16 [700] |
| | Coating on Heat Exchanger | | — |
| | External Finish Color | | Galvanized |
| | Unit Dimensions | W x D x H: In. [mm] | 35-7/16 x 28-7/8 x 9-7/8 [900 x 732 x 250] |
| | Package Dimensions | W x D x H: In. [mm] | 45-5/16 x 34-11/16 x 13-7/16 [1150 x 880 x 341] |
| Unit Weight | Lbs. [kg] | 58 [26] | |
| Package Weight | Lbs. [kg] | 69 [31] | |
| Refrigerant | Type | R410A | |
| Piping | Gas Pipe Size O.D. [Flared] | In.[mm] | 3/8 [9.52] |
| | Liquid Pipe Size O.D. [Flared] | In.[mm] | 1/4 [6.35] |

NOTES:

Conditions

¹Cooling (Indoor // Outdoor) °F 80 DB, 67 WB // 95 DB, 75 WB
²Heating at 47°F (Indoor // Outdoor) °F 70 DB, 60 WB // 47 DB, 43 WB

³Capacity varies based on the number of indoor units operating and the model of the Multi-zone Outdoor Unit. For reference to connected capacity charts, please refer Multi-zone Outdoor Unit Operational Performance.:

INDOOR UNIT ACCESSORIES: PEAD-A09AA7

| | | |
|----------------------------|---|-------------------|
| Control Interface | 3-Pin Connector | PAC-715AD |
| | BACnet® and Modbus Interface | PAC-UKPRC001-CN-1 |
| | CN24 Relay Kit | CN24RELAY-KIT-CM3 |
| | Connector cable for remote display | PAC-SA88HA-EP |
| | IT Extender | PAC-WHS01IE-E |
| | kumo station® for kumo cloud® | PAC-WHS01HC-E |
| | Lockdown bracket for remote controller | RCMKP1CB |
| | Remote Operation Adapter† | PAC-SF40RM-E |
| | Thermostat Interface | PAC-US444CN-1 |
| | USNAP Adapter | PAC-WHS01UP-E |
| | Wireless Interface for kumo cloud® | PAC-USWHS002-WF-2 |
| Remote Sensor | Flush Mount Temperature Sensor | PAC-USSEN001-FM-1 |
| | Remote Temperature Sensor | PAC-SE41TS-E |
| | Wireless temperature and humidity sensor for kumo cloud® | PAC-USWHS003-TH-1 |
| Wired Remote Controller | Airzone ZBS Wired Blueface Principal Controller White | AZZBSBLUEFACECB |
| | Airzone ZBS Wired Lite Controller White | AZZBSLITECB |
| | Airzone ZBS Wired Think Controller White | AZZBSTHINKCB |
| | Airzone ZBS Wireless Lite Controller White | AZZBSLITERB |
| | Airzone ZBS Wireless Think Controller White | AZZBSTHINKRB |
| | Deluxe Wired MA Remote Controller† | PAR-40MAAU |
| | Simple MA Remote Controller† | PAC-YT53CRAU-J |
| | Touch MA Controller† | PAR-CT01MAU-SB |
| Wireless Remote Controller | kumo touch™ RedLINK™ Wireless Controller | MHK2 |
| | Wireless MA Receiver | PAR-FA32MA-W |
| | Wireless MA Remote Controller | PAR-FL32MA-E |
| Condensate | Blue Diamond (Advanced) Mini Condensate Pump w/ Reservoir & Sensor (208/230V) [recommended] | X87-721 |
| | Blue Diamond (MegaBlue Advanced) Condensate Pump w/ Reservoir & Sensor | X87-835 |
| | Blue Diamond Sensor Extension Cable — 15 Ft. | C13-103 |
| Control Wire | 20/2PR, 1PR shielded + 1PR plenum wire for Airzone, 100 ft reel | CW2042S2-100 |
| | 20/2PR, shielded + 1PR plenum wire for Airzone, 500 ft reel | CW2042S2-500 |
| Disconnect Switch | (30A/600V/UL) [fits 2" X 4" utility box] - Black | TAZ-MS303 |
| | (30A/600V/UL) [fits 2" X 4" utility box] - White | TAZ-MS303W |
| Filter Box | Filter Box with MERV 13 Filter | FBM2-2-A |
| Lineset | 15' x 1/4" x 15' / 3/8" Lineset (Twin-Tube Insulation) | MLS143812T-15 |
| | 30' x 1/4" x 30' / 3/8" Lineset (Twin-Tube Insulation) | MLS143812T-30 |
| | 50' x 1/4" x 50' / 3/8" Lineset (Twin-Tube Insulation) | MLS143812T-50 |
| | 65' x 1/4" x 65' / 3/8" Lineset (Twin-Tube Insulation) | MLS143812T-65 |

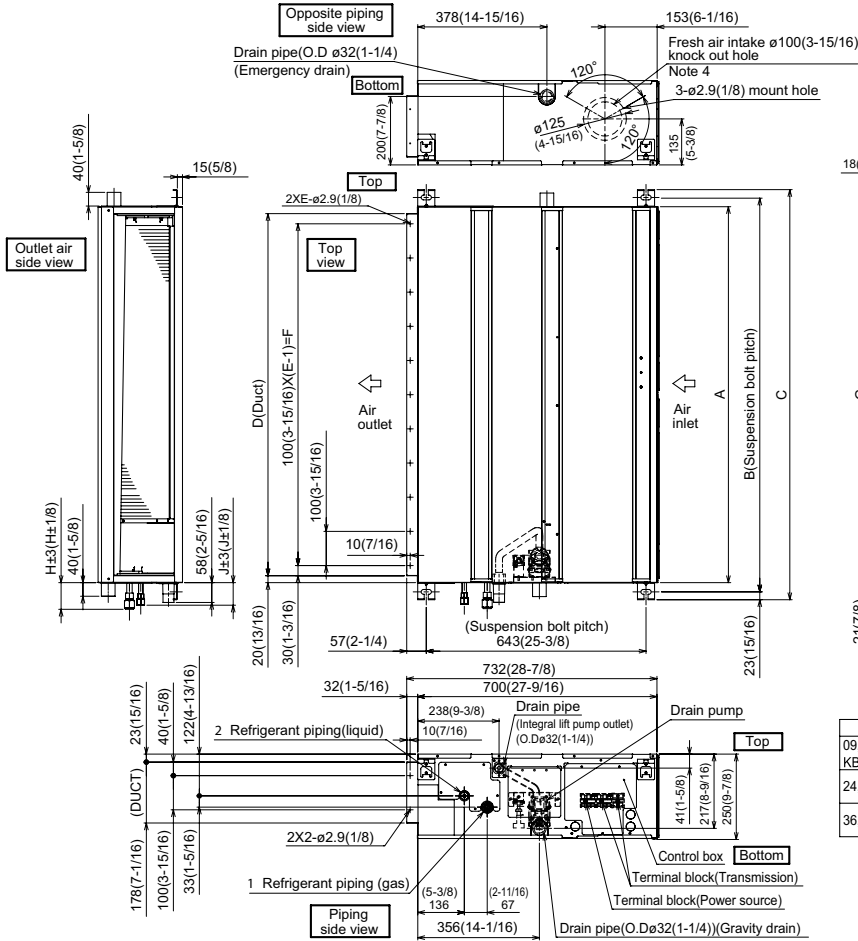
NOTES:

†Requires MAC-334IF-E

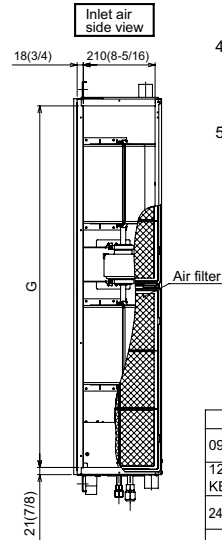
•Allows indoor units to connect to an MA Controller:

- Deluxe MA Remote Controller
- Simple MA Controller
- Touch MA Controller

INDOOR UNIT DIMENSIONS: PEAD-A09AA7



- Note 1. Use an M10 screw for the suspension bolt (field supply).
2. Keep the service space for maintenance at the bottom.
3. This drawing is for 24·30·36·42 KBTU/H models, which have 2 fans.
4. If the inlet duct is used, remove the air filter (supplied with the unit), then install the filter (field supply) at the suction side.
5. Heat air to 0°C (32°F) or higher when taking fresh air with a fresh air intake.



Unit:mm(in.)

| Model | J | 1 Gas pipe | 2 Liquid pipe |
|-------------------|---------------|-----------------|----------------|
| 09 KBTU/H | 62 (2-1/2) | ø9.52 (3/8) | ø6.35 (1/4) |
| 12, 15, 18 KBTU/H | 62 (2-1/2) | ø12.7 (1/2) | ø6.35 (1/4) |
| 24, 30 KBTU/H | 66 (2-5/8) | ø15.88 (5/8) | ø9.52 (3/8) |
| 36, 42 KBTU/H | | | |

Unit:mm(in.)

| Model | A | B | C | D | E | F | G | H |
|-----------------------|-------------------|-------------------|-------------------|-------------------|----|-------------------|--------------------|---------------|
| 09, 12, 15, 18 KBTU/H | 900 (35-7/16) | 954 (37-9/16) | 1000 (39-3/8) | 860 (33-7/8) | 9 | 800 (31-1/2) | 858 (33-13/16) | 72 (2-7/8) |
| 24, 30 KBTU/H | 1100 (43-5/16) | 1154 (45-7/16) | 1200 (47-1/4) | 1060 (41-3/4) | 11 | 1000 (39-3/8) | 1058 (41-11/16) | 78 (3-1/8) |
| 36, 42 KBTU/H | 1400 (55-1/8) | 1454 (57-1/4) | 1500 (59-1/16) | 1360 (53-9/16) | 14 | 1300 (51-3/16) | 1358 (53-1/2) | |

1340 Satellite Boulevard Suwanee, GA 30024
Toll Free: 800-433-4822 www.mehvac.com



FORM# PEAD-A09AA7 - 202104