

PLA-A24EA7

24,000 BTU/H 3' X 3' CEILING CASSETTE



Job Name:

System Reference:

Date:



GENERAL FEATURES

- Space-efficient ductless installation
- Equipped with 3D i-see Sensor® for enhanced comfort and energy efficiency
- Airflow settings for high and low ceiling applications
- Individual vane settings for direct/indirect airflow control or variable airflow patterns
- Knockouts for outside-air intake and branch-duct run
- Filter indicator signal
- Easy-to-clean, washable filter (optional high-efficiency filter available - requires multi-function casement)
- Built-in condensate lift mechanism
- Ideal for retail shops, classrooms, office spaces, conference centers, building lobbies, and more
- Multiple control options available:
 - kumo cloud® smart device app for remote access
 - Third-party interface options
 - Wired or wireless controllers

Specifications			System
Unit Type			PLA-A24EA7
Cooling Capacity ^{1,3}	BTU/H		24,000
Heating Capacity ^{2,3}	BTU/H		26,000
Electrical	Voltage, Phase, Frequency		208/230, 1, 60
	Guaranteed Voltage Range	V AC	198- 253V
	Voltage: Indoor - Outdoor, S1-S2	V AC	208/230
	Voltage: Indoor - Outdoor, S2-S3	V DC	24
	Short-circuit Current Rating [SCCR]	kA	5
Indoor Unit	MCA	A	1.0
	Fan Motor Full Load Amperage	A	0.49
	Fan Motor Output	W	120
	Airflow Rate at Cooling, Dry	CFM	530-640-710-810
	Airflow Rate at Cooling, Wet	CFM	490-600-670-770
	Airflow Rate at Heating, Dry	CFM	530-640-710-810
	Sound Pressure Level [Cooling]	dB[A]	28-30-33-36
	Sound Pressure Level [Heating]	dB[A]	28-30-33-36
	Drain Pipe Size	In. [mm]	1-1/4 [32]
	Condensate Lift Mechanism, Maximum Distance	In. [mm]	33-7/16 [849]
	Coating on Heat Exchanger		—
	External Finish Color		White Munsell 6.4Y 8.9/0.4
	Unit Dimensions	W x D x H: In. [mm]	33-1/16 // 37-13/32 x 33-1/16 // 37-13/32 x 11-3/4 // 1-9/16 [840 // 950 x 840 // 950 x 298 // 40]
	Package Dimensions	W x D x H: In. [mm]	35-9/16 // 39-6/16 x 34-5/16 // 38-3/16 x 16-9/16 // 4-12/16 [903 // 1000 x 871 // 970 x 421 // 121]
	Unit Weight	Lbs. [kg]	56 // 11 [25 // 5]
	Package Weight	Lbs. [kg]	68 [31]
Refrigerant	Type		R410A
Piping	Gas Pipe Size O.D. [Flared]	In. [mm]	5/8 [15.88]
	Liquid Pipe Size O.D. [Flared]	In. [mm]	3/8 [9.52]

NOTES:

Conditions

¹Cooling (Indoor // Outdoor)

°F 80 DB, 67 WB // 95 DB, 75 WB

²Heating at 47°F (Indoor // Outdoor)

°F 70 DB, 60 WB // 47 DB, 43 WB

³Capacity varies based on the number of indoor units operating and the model of the Multi-zone Outdoor Unit. For reference to connected capacity charts, please refer Multi-zone Outdoor Unit Operational Performance.:

INDOOR UNIT ACCESSORIES: PLA-A24EA7

Control Interface	3-Pin Connector	PAC-715AD
	BACnet® and Modbus Interface	PAC-UKPRC001-CN-1
	CN24 Relay Kit	CN24RELAY-KIT-CM3
	IT Extender	PAC-WHS01IE-E
	kumo station® for kumo cloud®	PAC-WHS01HC-E
	Lockdown bracket for remote controller	RCMKP1CB
	Remote Operation Adapter†	PAC-SF40RM-E
	Thermostat Interface	PAC-US444CN-1
	USNAP Adapter	PAC-WHS01UP-E
	Wireless Interface for kumo cloud®	PAC-USWHS002-WF-2
Remote Sensor	Flush Mount Temperature Sensor	PAC-USSEN001-FM-1
	Remote Temperature Sensor	PAC-SE41TS-E
	Wireless temperature and humidity sensor for kumo cloud®	PAC-USWHS003-TH-1
Wired Remote Controller	Deluxe Wired MA Remote Controller†	PAR-40MAAU
	Simple MA Remote Controller†	PAC-YT53CRAU-J
	Touch MA Controller†	PAR-CT01MAU-SB
Wireless Remote Controller	kumo touch™ RedLINK™ Wireless Controller	MHK2
	Wireless Remote Controller	PAR-SL100A-E
	Wireless Signal Receiver Panel	PAR-SR4LU-E
Casement	Multi-function Casement	PAC-SJ41TM-E
Condensate	Blue Diamond (Advanced) Mini Condensate Pump w/ Reservoir & Sensor (208/230V) [recommended]	X87-721
	Blue Diamond (MegaBlue Advanced) Condensate Pump w/ Reservoir & Sensor	X87-835
	Blue Diamond Sensor Extension Cable — 15 Ft.	C13-103
Disconnect Switch	(30A/600V/UL) [fits 2" X 4" utility box] - Black	TAZ-MS303
	(30A/600V/UL) [fits 2" X 4" utility box] - White	TAZ-MS303W
Filter	High Efficiency Filter Element	PAC-SH59KF-E
Lineset	10' x 3/8" x 10' x 5/8" Lineset (Twin-Tube Insulation)	MPLS385812T-10
	100' x 3/8" x 100' x 5/8" Lineset (Twin-Tube Insulation)	MPLS385812T-100
	15' x 3/8" x 15' x 5/8" Lineset (Twin-Tube Insulation)	MPLS385812T-15
	30' x 3/8" x 30' x 5/8" Lineset (Twin-Tube Insulation)	MPLS385812T-30
	50' x 3/8" x 50' x 5/8" Lineset (Twin-Tube Insulation)	MPLS385812T-50
	65' x 3/8" x 65' x 5/8" Lineset (Twin-Tube Insulation)	MPLS385812T-65
Shutter Plate	Shutter Plate	PAC-SJ37SP-E
Space Panel	Architectural Surround for Ceiling Recessed Units	PLFY-ITP1
	Space Panel	PAC-SJ38AS-E

NOTES:

†Requires MAC-3341F-E

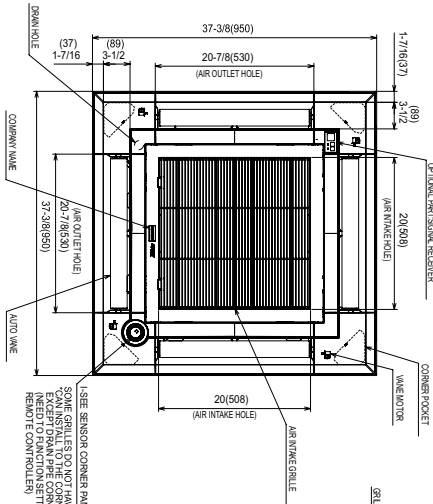
•Allows indoor units to connect to an MA Controller:

Deluxe MA Remote Controller
Simple MA Controller
Touch MA Controller

INDOOR UNIT DIMENSIONS: PLA-A24EA7

Unit: inch (mm)

MODELS	①	②	A	B	C	D	E	F
12/18/24/30/36/42 KBTUH								
17/18 KBTUH	REFRIGERANT PIPES 3/8"	REFRIGERANT PIPE 1/2"	9-12	10-316	3/8"	3/8 x 5/8	10-176(265)	137-136(4500)
24/30/36/42 KBTUH	FLARED CONNECTION 1/2"	FLARED CONNECTION 1/2"	(241)	(284)			ONLESS	ONLESS
	REFRIGERANT PIPES 3/8"	REFRIGERANT PIPE 1/2"	11-116	13-116	3/8"	3/8 x 5/8	12-183	177-134(4500)
	FLARED CONNECTION 3/8"	FLARED CONNECTION 1/2"	(281)	(288)	(793)		ONLESS	ONLESS



NOT TO EXCEED THE SHIELDING DISTANCE OF 10 CM (4 INCHES) FROM THE SURFACE OF THE SHIELDING MATERIAL. FOR THE SHIELDING DISTANCE, AS NEEDED, FOR THE SUSPENSION DUCT, USE 100 CM OR 39.37 INCH.

4. (PROHIBITED AT THE LOCAL SITE)
DO NOT PLUMP THE USE OF 2x6 (2x4 IN 1941) 32 PC (100#) SLATS TO BE MAX 3/8" (3/16" FROM THE CEILING, SLATS ARE MAX 3/8" (3/16" FROM THE CEILING) FOR PURPOSE OF THE SHIELDING DISTANCE. THE SHIELDING DISTANCE IS MAX 3/8" (3/16" FROM THE CEILING) FOR THE CONTROL POWER WIRES CONNECTION.

5. THE SHIELDING DISTANCE IS NOT TO BE ADJUSTED WITH THE SHIELDING DISTANCE.

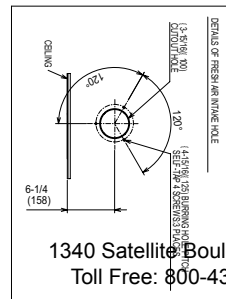
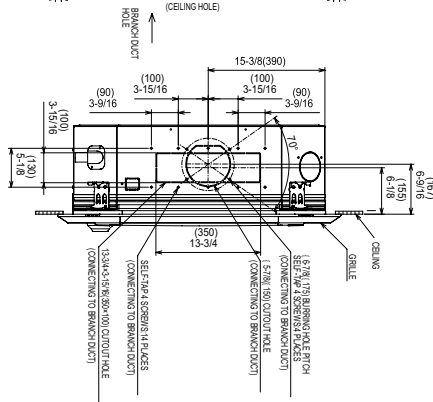
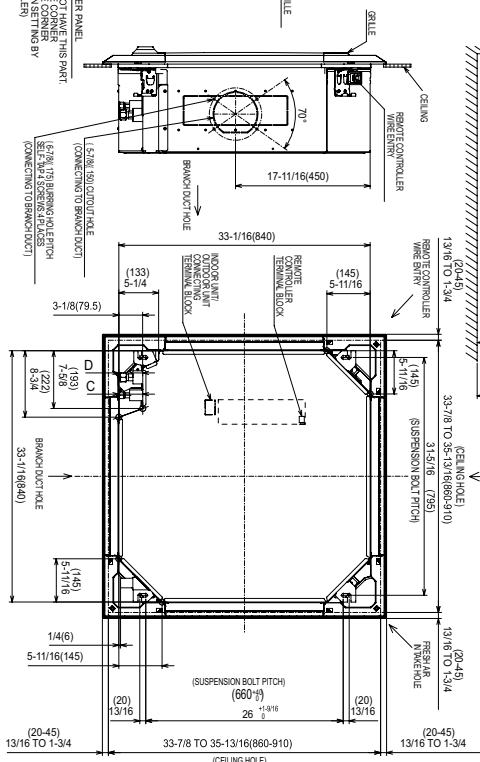
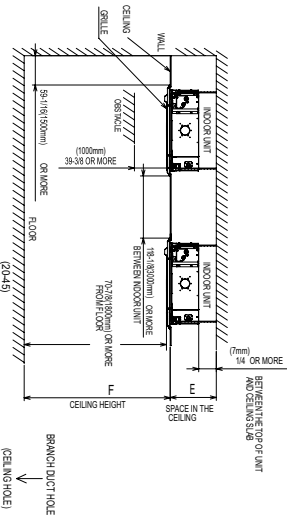
6. WHEN INSTALLING THE SHIELDING DISTANCE, THE SHIELDING DISTANCE IS NOT TO BE ADJUSTED WITH THE SHIELDING DISTANCE.

7. RECOMMEND A 1/2" OR MORE SPACE BETWEEN TRANSDUCER AND CEILING FOR THE INSTALLATION OF THE SHIELDING DISTANCE.

8. IT BECOMES THE CAUSE OF DISCREPANCY ON PROTECT DRIPPING.

9. IT BECOMES THE CAUSE OF DISCREPANCY ON PROTECT DRIPPING.

10. FOR THE INSTALLATION OF THE OPTIMUM HIGH EFFICIENCY FILTER OR THERMAL/FUNCTIONAL COMPONENT, REFER TO SPECIAL DRAWING.



1340 Satellite Boulevard Suwanee, GA 30024
Toll Free: 800-433-4822 www.mehvac.com

