

PKA-A18HA7 & PUZ-A18NKA7(-BS)
18,000 BTU/H WALL-MOUNTED INDOOR UNIT
18,000 BTU/H HEAT PUMP UNIVERSAL OUTDOOR



Job Name:

System Reference:

Date:



Indoor Unit.....PKA-A18HA7

Outdoor Unit

Standard Model.....PUZ-A18NKA7

Seacoast Model.....PUZ-A18NKA7-BS



INDOOR UNIT FEATURES

- Sleek, compact design
- Simple installation
- Vane setting for air flow direction control
- Auto fan speed mode
- Ideal for spaces such as server rooms, daycare centers, classrooms, churches, small offices, and more
- Multiple control options available:
 - kumo cloud® smart device app for remote access
 - Third-party interface options
 - Wired or wireless controllers

OUTDOOR UNIT FEATURES

- Variable speed INVERTER-driven compressor
- Power receiver pre-charged with refrigerant volume for piping length up to 70 ft
- Low ambient cooling down to 0°F providing 100% capacity
- 24-hour continuous operation (cooling mode)
- High pressure protection
- Fast restart
- Superior energy and operational efficiency

SPECIFICATIONS: PKA-A18HA7 & PUZ-A18NKA7(-BS)

| | | | |
|---|--|---------------------|---|
| Cooling at 95°F ¹ | Maximum Capacity | BTU/H | 18,000 |
| | Rated Capacity | BTU/H | 18,000 |
| | Minimum Capacity | BTU/H | 8,000 |
| | Maximum Power Input | W | 1,820 |
| | Rated Power Input | W | 1,820 |
| | Moisture Removal | Pints/h | 5.2 |
| | Sensible Heat Factor | | 0.68 |
| Heating at 47°F ² | Maximum Capacity | BTU/H | 22,000 |
| | Rated Capacity | BTU/H | 19,000 |
| | Minimum Capacity | BTU/H | 7,700 |
| | Maximum Power Input | W | 1,800 |
| | Rated Power Input | W | 1,300 |
| | Power Factor | % | 340.0/340.0 |
| Heating at 17°F ³ | Maximum Capacity | BTU/H | 13,900 |
| | Rated Capacity | BTU/H | 11,300 |
| | Maximum Power Input | W | 1,430 |
| | Rated Power Input | W | 1,340 |
| Efficiency | SEER | | 18.5 |
| | EER ¹ | | 9.9 |
| | HSPF [IV] | | 10.2 |
| | COP at 47°F ² | | 4.28 |
| | COP at 17°F at Maximum Capacity ³ | | 2.85 |
| | ENERGY STAR® Certified | | No |
| Electrical | Voltage, Phase, Frequency | | 208/230, 1, 60 |
| | Guaranteed Voltage Range | V AC | 198 - 253 |
| | Voltage: Indoor - Outdoor, S1-S2 | V AC | 208/230 |
| | Voltage: Indoor - Outdoor, S2-S3 | V DC | 24 |
| | Short-circuit Current Rating [SCCR] | kA | 5 |
| | Recommended Fuse/Breaker Size (Outdoor) | A | 15 |
| | Recommended Wire Size [Indoor - Outdoor] | AWG | 14 |
| | Power Supply | | Indoor unit is powered by the outdoor unit |
| Indoor Unit | MCA | A | 1.0 |
| | Fan Motor Full Load Amperage | A | 0.33 |
| | Fan Motor Output | W | 30 |
| | Fan Motor Type | | DC Motor |
| | Airflow Rate at Cooling, Dry | CFM | 320–370–425 |
| | Airflow Rate at Cooling, Wet | CFM | 290–335–380 |
| | Airflow Rate at Heating, Dry | CFM | 320–370–425 |
| | Sound Pressure Level [Cooling] | dB[A] | 36–40–43 |
| | Sound Pressure Level [Heating] | dB[A] | 36–40–43 |
| | Drain Pipe Size | In. [mm] | 5/8 [16] |
| | Coating on Heat Exchanger | | — |
| | External Finish Color | | White Munsell 1.0Y 9.2/0.2 |
| | Unit Dimensions | W x D x H: In. [mm] | 35-3/8 x 9-13/16 x 11-5/8 [898 x 249 x 295] |
| | Package Dimensions | W x D x H: In. [mm] | 39-3/8 x 15-3/4 x 13-3/8 [1000 x 400 x 340] |
| | Unit Weight | Lbs. [kg] | 29 [13] |
| Package Weight | Lbs. [kg] | 33 [15] | |
| Indoor Unit Operating Temperature Range | Cooling Intake Air Temp [Maximum / Minimum]* | °F | 90 DB, 72 WB / 66 DB, 61 WB |
| | Heating Intake Air Temp [Maximum / Minimum] | °F | 77 DB / 59 DB |

NOTES:

AHRI Rated Conditions

(Rated data is determined at a fixed compressor speed)

¹Cooling (Indoor // Outdoor)

°F 80 DB, 67 WB // 95 DB, 75 WB

²Heating at 47°F (Indoor // Outdoor)

°F 70 DB, 60 WB // 47 DB, 43 WB

³Heating at 17°F (Indoor // Outdoor)

°F 70 DB, 60 WB // 17 DB, 15 WB

Conditions

⁴Heating at 5°F (Indoor // Outdoor)

°F 70 DB, 60 WB // 5 DB, 4 WB

⁵Heating at -4°F (Indoor // Outdoor)

°F 70 DB, 60 WB // -4 DB, -5 WB

⁶Heating at -5°F (Indoor // Outdoor)

°F 70 DB, 60 WB // -5 DB, -6 WB

⁷Heating at -13°F (Indoor // Outdoor)

°F 70 DB, 60 WB // -13 DB, -14 WB

*Outdoor Unit Operating Temperature Range (Cooling Air Temp (Maximum / Minimum)):

- Wind baffles required to operate below 23°F DB in cooling mode.
- Heat pump system with wind baffle: 0°F - 115°F.
- Refer to wind baffle documentation for further information.

**Outdoor Unit Operating Temperature Range (Cooling Thermal Lock-out / Re-start Temperatures; Heating Thermal Lock-out / Re-start Temperatures):

- System cuts out in heating mode to avoid thermistor error and automatically restarts at these temperatures.

SEACOAST PROTECTION (-BS MODELS)

- External Outer Panel: Phosphate coating + Acrylic-Enamel coating
- Fan Motor Support: Epoxy resin coating (at edge face)
- Separator Assembly Valve Bed: Epoxy resin coating (at edge face)
- Blue Fin treatment is an anti-corrosion treatment that is applied to the condenser coil to protect it against airborne contaminants.

SPECIFICATIONS: PKA-A18HA7 & PUZ-A18NKA7(-BS)

| | | | | |
|--|--|---------------------------------------|---|-----------------------------|
| Outdoor Unit | MCA | A | 11.0 | |
| | MOCP | A | 28 | |
| | Fan Motor Full Load Amperage | A | 0.5 | |
| | Fan Motor Output | W | 46 | |
| | Airflow Rate | CFM | 1590/1590 | |
| | Refrigerant Control | | LEV | |
| | Defrost Method | | Reverse Cycle | |
| | Coating on Heat Exchanger | | Blue Fin Coating (BS Model only) | |
| | Sound Pressure Level, Cooling ¹ | dB(A) | 44 | |
| | Sound Pressure Level, Heating ² | dB(A) | 46 | |
| | Compressor Type | | INVERTER-driven twin rotary | |
| | Compressor Model | | SNB130FQCMC-L1 | |
| | Compressor Rated Load Amps | A | 7 | |
| | Compressor Locked Rotor Amps | A | 12.0 | |
| | Compressor Oil Type // Charge | oz. | FV50S // 16 | |
| | External Finish Color | | Ivory Munsell 3Y 7.8/1.1 | |
| | Base Pan Heater | | N/A | |
| | Unit Dimensions | W x D x H: In. [mm] | 31-13/16 (2+7/16) x 11-13/16 x 24-13/16 [809 (+62) x 300 x 630] | |
| | Package Dimensions | W x D x H: In. [mm] | 37-1/16 x 16-3/16 x 27-7/16 [941 x 411 x 697] | |
| | Unit Weight | Lbs. [kg] | 100 [45] | |
| | Package Weight | Lbs. [kg] | 112 [51] | |
| | Outdoor Unit Operating Temperature Range | Cooling Air Temp [Maximum / Minimum]* | °F | 115 DB / 0 DB |
| | | Heating Air Temp [Maximum / Minimum] | °F | 70 DB, 59 WB / 12 DB, 14 WB |
| Heating Thermal Lock-out / Re-start Temperatures** | | °F | 8 / 12 | |
| Refrigerant | Type | | R410A | |
| | Charge | Lbs, oz | 4, 14.0 | |
| | Chargeless Piping Length | Ft. [m] | 70.0 [21.0] | |
| | Additional Refrigerant Charge Per Additional Piping Length | oz./Ft. [g/m] | 0.2 [19] | |
| Piping | Gas Pipe Size O.D. [Flared] | In.[mm] | 1/2 [12.7] | |
| | Liquid Pipe Size O.D. [Flared] | In.[mm] | 1/4 [6.35] | |
| | Maximum Piping Length | Ft. [m] | 100 [30] | |
| | Maximum Height Difference | Ft. [m] | 100 [30] | |
| | Maximum Number of Bends | | 15 | |

NOTES:

AHRI Rated Conditions
 (Rated data is determined at a fixed compressor speed)

| | | |
|--|----|------------------------------|
| ¹ Cooling (Indoor // Outdoor) | °F | 80 DB, 67 WB // 95 DB, 75 WB |
| ² Heating at 47°F (Indoor // Outdoor) | °F | 70 DB, 60 WB // 47 DB, 43 WB |
| ³ Heating at 17°F (Indoor // Outdoor) | °F | 70 DB, 60 WB // 17 DB, 15 WB |

Conditions

| | | |
|---|----|--------------------------------|
| ⁴ Heating at 5°F (Indoor // Outdoor) | °F | 70 DB, 60 WB // 5 DB, 4 WB |
| ⁵ Heating at -4°F (Indoor // Outdoor) | °F | 70 DB, 60 WB // -4 DB, -5 WB |
| ⁶ Heating at -5°F (Indoor // Outdoor) | °F | 70 DB, 60 WB // -5 DB, -6 WB |
| ⁷ Heating at -13°F (Indoor // Outdoor) | °F | 70 DB, 60 WB // -13 DB, -14 WB |

*Outdoor Unit Operating Temperature Range (Cooling Air Temp (Maximum / Minimum)):

- Wind baffles required to operate below 23°F DB in cooling mode.
- Heat pump system with wind baffle: 0°F - 115°F.
- Refer to wind baffle documentation for further information.

**Outdoor Unit Operating Temperature Range (Cooling Thermal Lock-out / Re-start Temperatures; Heating Thermal Lock-out / Re-start Temperatures):

- System cuts out in heating mode to avoid thermistor error and automatically restarts at these temperatures.

SEACOAST PROTECTION (-BS MODELS)

- External Outer Panel: Phosphate coating + Acrylic-Enamel coating
- Fan Motor Support: Epoxy resin coating (at edge face)
- Separator Assembly Valve Bed: Epoxy resin coating (at edge face)
- Blue Fin treatment is an anti-corrosion treatment that is applied to the condenser coil to protect it against airborne contaminants.

INDOOR UNIT ACCESSORIES: PKA-A18HA7

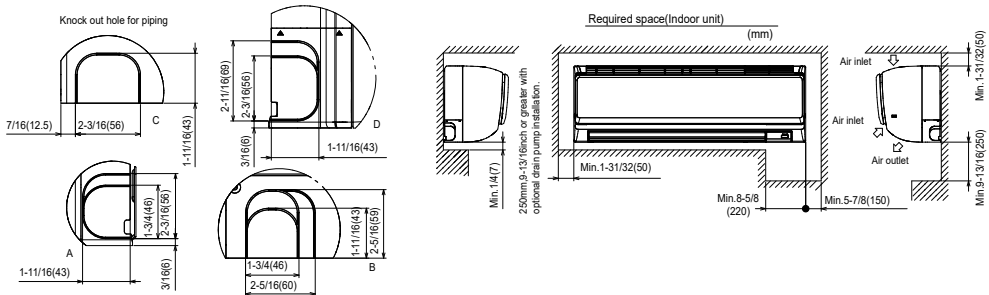
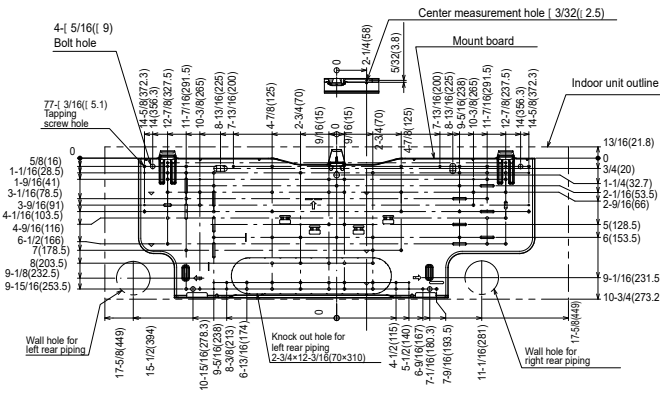
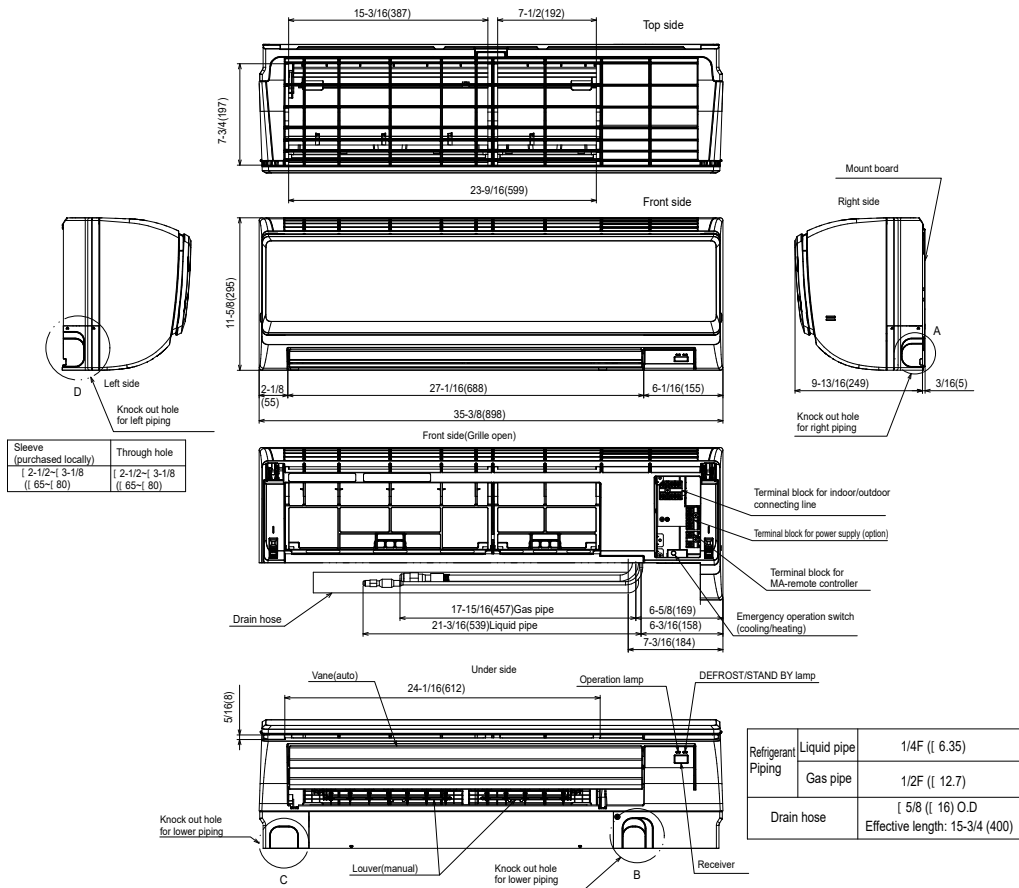
| | | |
|----------------------------|---|--------------------|
| Control Interface | 3-Pin Connector | PAC-715AD |
| | BACnet® and Modbus® Interface | PAC-UKPRC001-CN-1 |
| | IT Extender | PAC-WHS01IE-E |
| | kumo station® for kumo cloud® | PAC-WHS01HC-E |
| | Lockdown bracket for remote controller | RCMKP1CB |
| | Thermostat Interface | PAC-US444CN-1 |
| | USNAP Adapter | PAC-WHS01UP-E |
| | Wireless Interface for kumo cloud® | PAC-USWHS002-WF-2 |
| Remote Sensor | Flush Mount Temperature Sensor | PAC-USSEEN001-FM-1 |
| | Remote Temperature Sensor | PAC-SE41TS-E |
| | Wireless temperature and humidity sensor for kumo cloud® | PAC-USWHS003-TH-1 |
| Wired Remote Controller | Deluxe Wired MA Remote Controller† | PAR-40MAAU |
| | Simple MA Remote Controller† | PAC-YT53CRAU-J |
| | Touch MA Controller† | PAR-CT01MAU-SB |
| Wireless Remote Controller | kumo touch™ RedLINK™ Wireless Controller | MHK2 |
| | Wireless MA Controller | PAR-FA32MA-W |
| | Wireless MA Remote Controller | PAR-FL32MA-E |
| Condensate | Blue Diamond (Advanced) Mini Condensate Pump w/ Reservoir & Sensor (208/230V) [recommended] | X87-721 |
| | Blue Diamond (MicroBlue) Mini Condensate Pump (110/208/230V) up to 18,000 BTU/H | X85-003 |
| | Blue Diamond Sensor Extension Cable — 15 Ft. | C13-103 |
| | Drain Pan Level Sensor/Control | SS610E |
| | Fascia Kit for MicroBlue Pump, mounts the MicroBlue and sensor directly beneath indoor unit | T18-016 |
| | Sauermann Condensate Pump | SI30-230 |
| Disconnect Switch | (30A/600V/UL) [fits 2" X 4" utility box] - Black | TAZ-MS303 |
| | (30A/600V/UL) [fits 2" X 4" utility box] - White | TAZ-MS303W |
| Lineset | 100' x 1/4" x 100' / 1/2" Lineset (Twin-Tube Insulation) | MLS141212T-100 |
| | 15' x 1/4" x 15' / 1/2" Lineset (Twin-Tube Insulation) | MLS141212T-15 |
| | 30' x 1/4" x 30' / 1/2" Lineset (Twin-Tube Insulation) | MLS141212T-30 |
| | 50' x 1/4" x 50' / 1/2" Lineset (Twin-Tube Insulation) | MLS141212T-50 |
| | 65' x 1/4" x 65' / 1/2" Lineset (Twin-Tube Insulation) | MLS141212T-65 |

OUTDOOR UNIT ACCESSORIES: PUZ-A18NKA7(-BS)

| | | |
|-----------------------|--|--------------|
| Air Outlet Guide | Air Outlet Guide | PAC-SJ07SG-E |
| Centralized Drain Pan | Centralized Drain Pan | PAC-SG63DP-E |
| | Drain Pan | PAC-SG64DP-E |
| Control/Service Tool | Control/Service Tool | PAC-SK52ST |
| | M- & P-Series Maintenance Tool Cable Set | M21EC0397 |
| | USB/UART Conversion Cable (Required for all laptop connection) | M21EC1397 |
| Drain Socket | Drain Socket | MAC-871DS |
| Hail Guards | Hail Guard | HG-A5 |
| M-NET Converter | M-NET Converter | PAC-SJ96MA-E |
| Mini-Split Wire | 14 Gauge, 4 wire MiniSplit Cable—250 ft. roll | S144-250 |
| | 14 Gauge, 4 wire MiniSplit Cable—50 ft. roll | S144-50 |
| | 16 Gauge, 4 wire MiniSplit Cable—250 ft. roll | S164-250 |
| | 16 Gauge, 4 wire MiniSplit Cable—50 ft. roll | S164-50 |
| Mounting Pad | Condensing Unit Mounting Pad: 16" x 36" x 3" | ULTRILITE1 |
| Stand | 18" Single Fan Stand | QSMS1801M |
| | 24" Single Fan Stand | QSMS2401M |
| | Condenser Wall Bracket | QSWB2000M-1 |
| | Condenser Wall Bracket -Stainless Steel Finish | QSWBSS |
| | Outdoor Unit Stand — 12" High | QSMS1201M |
| Wind Baffle | Front Wind Baffle | WB-PA4 |
| | Rear Wind Baffle | WB-RE4 |
| | Side Advanced Wind Baffle | WB-SD4 |

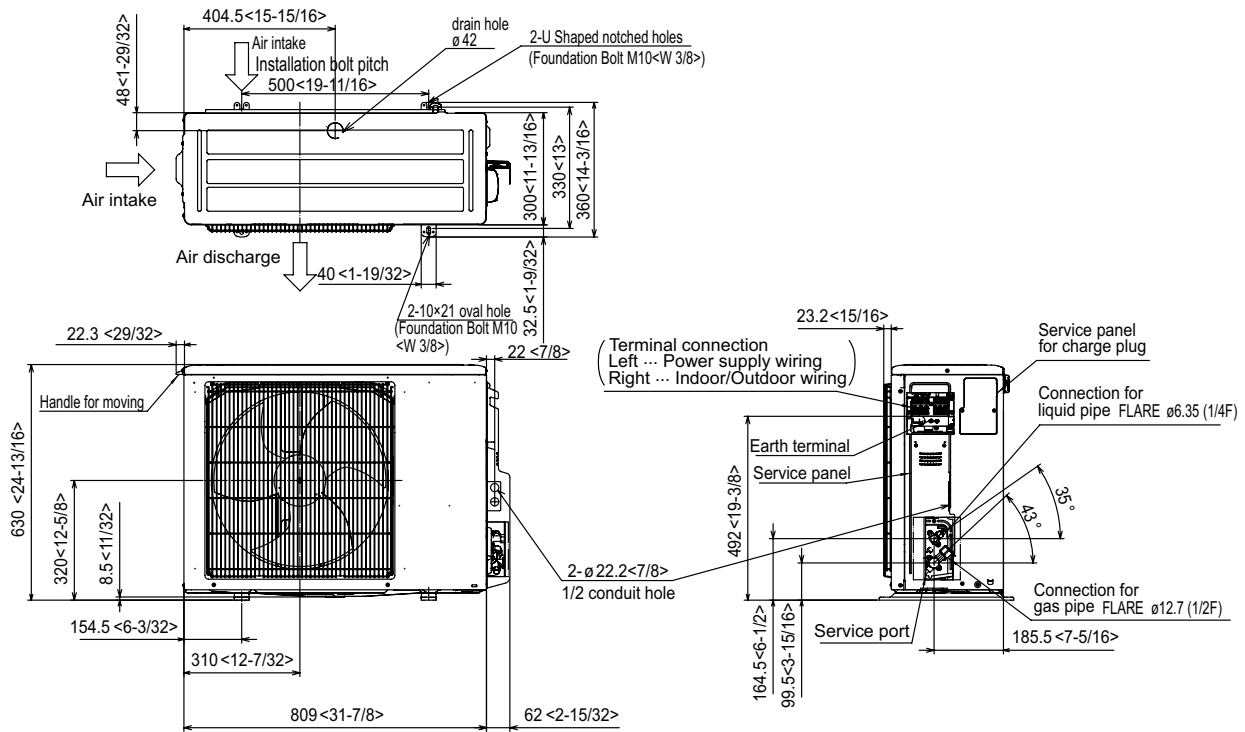
INDOOR UNIT DIMENSIONS: PKA-A18HA7

Unit: inch (mm)

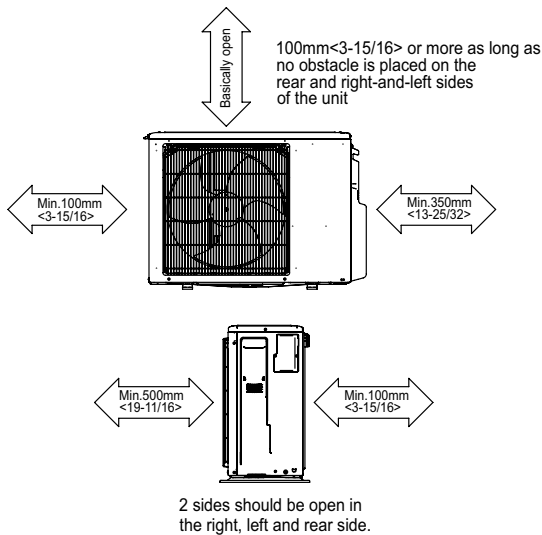


OUTDOOR UNIT DIMENSIONS: PUZ-A18NKA7(-BS)

Unit: mm<in>



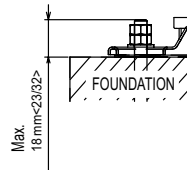
Free space around the outdoor unit (basic example)



FOUNDATION BOLTS

Please secure the unit firmly with 4 foundation (M10<W3/8>) bolts. (Bolts, washers and nut must be purchased locally).

<Foundation bolt height>



PIPING-WIRING DIRECTION

Piping and wiring connection can be made from the rear direction only.