

INSTALLATION INSTRUCTIONS FOR HORIZONTAL VENT TERMINATION KITS FOR 90 PLUS FURNACES

KIT NUMBERS RXGY-D02, RXGY-D02A, RXGY-D03, RXGY-D03A

These kits contain parts to retrofit present and new installations of 90 plus furnaces. There are two kits, one for inputs of 45,000 thru 75,000 BTUH and another for inputs of 90,000 thru 120,000 BTUH. The following parts are included.

Kit No. RXGY-D02 (US)

2" Tee Assy With 1/2" PVC Drain Conn.	Part No. 68-23476-01
1/2" PVC - 5" Dia. Trap	68-23474-01
4 - 2" PVC 1/4 Med. Bend Elbows	68-22989-01
2" To 1 1/2" PVC Coupling With 1 1/2" Pipe Assy.	68-23475-01
Wind Deflector Vane	68-23473-01
Vent Template.	92-23480-01
Support Straps. Qty. 2	68-23478-01

Kit No. RXGY-D03 (US)

3" Tee Assy. With 1/2" PVC Drain Conn.	Part No. 68-23477-01
1/2" PVC - 5" Dia. Trap	68-23474-01
4 2" PVC 1/4 Med. Bend Elbows	68-22989-01
Wind Deflector Vane	68-23473-01
Vent Template.	92-23480-01
Support Straps. Qty. 2	68-23478-01

RXGY-D02A PARTS LIST (CANADA)

2" Tee W/1/2" PVC Drain Conn.	68-23476-01
1/2" PVC trap, 5" diam.	68-23474-01
Wind Deflector Vane	68-23473-01
Vent template	92-23480-01

RXGY-D03A PARTS LIST (CANADA)

3" Tee Assy. With 1/2" PVC Drain Conn.	Part No. 68-23477-01
1/2" PVC trap, 5" diam.	68-23474-01
Wind Deflector Vane	68-23473-01
Vent template	92-23480-01

NOTE: The RXGY-D02A and RXGY-D03A kits for Canadian installations contains only unique inlet-air components. Additional inlet air side pipe/fittings must be purchased in the field. ALL FIELD SUPPLIED OUTLET AIR (VENT) PIPE/FITTINGS MUST BE IPEX BRAND ULC S636 MATERIAL.

Follow the furnace Installation and Operation Instructions to install the exhaust and intake pipes from the furnace to the outside wall. The kits contain a drain tee assembly and trap. Install them in the intake air pipe as shown in figure 1. Attach the trap to the bottom of the tee with PVC solvent. Connect the other end of the trap to a suitable drain such as the furnace condensate drain line. Make the connection downstream of the drain trap on the furnace.

Before starting the installation, refer to Detail A in Figure 2. The template supplied in the kit gives the location of the exhaust termination relative to the intake termination. Maintain this relationship for all installations. Use the template for new installations to locate the holes in the outside wall for exhaust and intake pipes. Use the template to orientate the exhaust and intake pipe termination openings for field retrofits and alternate installation applications where terminations are elevated due to anticipated snow levels.

45,000 thru 75,000 BTUH Models

The standard horizontal exhaust termination requires a reduction from 2" to 1 1/2" PVC pipe immediately on the outside wall using the 2" x 1 1/2" reducer coupling and pipe assembly provided. The 2" x 1 1/2" coupling prevents pushing the termination inward. See Figures 2 and 3.

90,000 thru 120,000 BTUH Models

The standard horizontal exhaust termination is a 2" PVC pipe extending outward 12" from the wall. Make reduction from 3" to 2" pipe before passing thru the wall. Install 2" coupling at outside wall to prevent pushing the termination inward. See Figures 2 and 3.

The standard intake termination for all models is a 2" coupling with a wind deflector vane attached. Install 2" coupling at outside wall to prevent pushing the termination inward. Cut a 2 1/4" length of 2" PVC pipe and connect this and another 2" coupling to the coupling at the wall. The other coupling must terminate 4" from the wall. On models with 3" intake pipe from furnace to outside wall, reduce to 2" pipe inside the wall. See Figures 2 and 3.

For field retrofit applications, cut off the existing exhaust and intake terminations. Install standard exhaust terminations as described in above paragraph and Figure 3. The intake may be on either side of the exhaust termination. Use the 2" elbows provided and 2" pipe to relocate the intake terminal which will be one of the elbows. Refer to Figures 2 and 4 and the template provided to position the intake terminal with respect to the exhaust terminal. Install wind deflector vane in elbow in vertical position. Use pipe support strap provided to secure the 2" pipe to the wall. Pipe should be parallel to wall. See Figures 2 and 4. Use the 2" elbows provided and 2" pipe to relocate the intake termination. The intake terminal for this installation will be an elbow. Install wind deflection vane in the elbow in a vertical position. Use pipe support strap provided to secure the 2" pipe to the wall. Pipe should be parallel to the wall. See Figures 2 and 4.

The terminations may be raised up to 24" above the wall penetrations if required for anticipated snow levels. See Figures 2 and 5. This is accomplished with the 2" elbows provided and 2" pipe. The elbows serve as terminations except the exhaust which will require a 2" pipe extending from the elbow for models with inputs of 90,000 to 120,000 BTUH. The pipe must terminate 12" from the wall. Models with inputs of 45,000 to 75,000 BTUH require 1 1/2" pipe (2" to 1 1/2" coupling and 1 1/2" pipe provided). Install wind deflector vane in the inlet elbow. Use pipe straps provided to secure the pipes to the wall, keeping them parallel to the wall. **NOTE:** The 120,000 BTUH models of the new 34" tall 90 Plus series, with excessively long runs, must use Kit No. RXGY-D04/D04A.

The vane shown in the intake terminations must always be in the vertical position and must be secured in place with PVC primer and cement. also, use PVC primer and cement which conforms to ASTM D2564 to make all connections. Use pipe straps provided, and stainless steel screws, to hold the extension pipes to the wall, as required.

Any alterations to this kit not authorized not authorized by these instructions or the use of any components or accessories not design certified by us may result in improper, furnace operation. We, the manufacturer, cannot and will not be responsible for injury or damage caused by the use of such components or accessories.

TYPICAL CONDENSATE TRAP INSTALLATION INTAKE TERMINATION

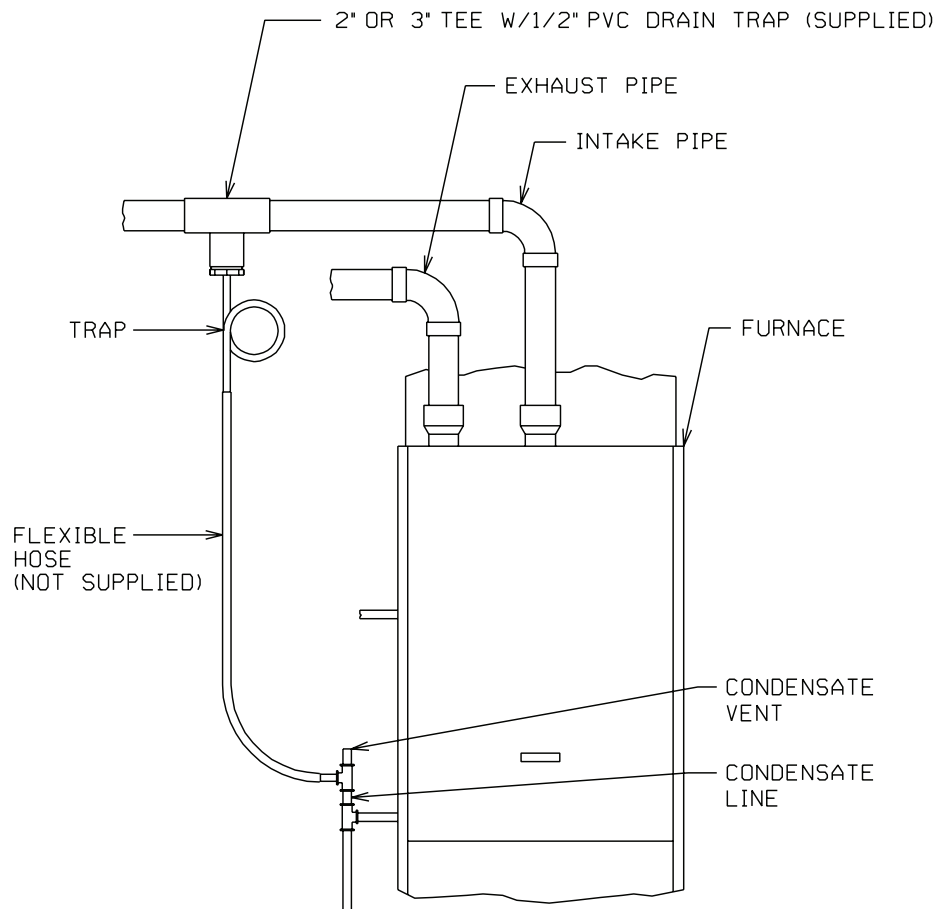
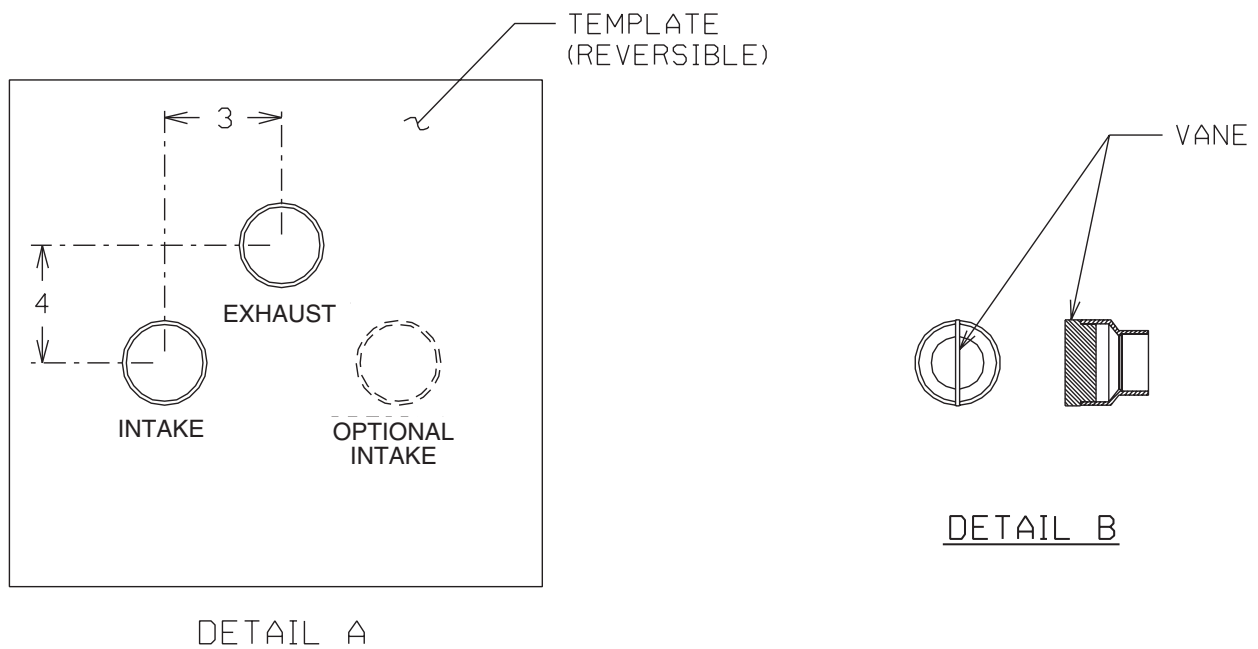


FIGURE 1



EXHAUST/INTAKE RELATIONSHIP

FIGURE 2

STANDARD HORIZONTAL VENT TERMINATION NEW INSTALLATIONS

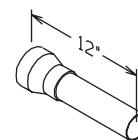
2" COUPLING
MODELS WITH INPUTS OF
90,000 TO 120,000 BTUH

2" COUPLING

SEE DETAIL A
FIG. 1

EXHAUST VENT
A.) 2" PVC FOR MODELS WITH INPUTS OF
90,000 TO 120,000 BTUH
B.) REDUCE TO 1½" PVC FOR MODELS WITH
INPUTS OF 45,000 TO 75,000 BTUH
IMMEDIATELY OUTSIDE OF WALL (2" TO 1½"
REDUCER AND 1½" PVC PIPE SUPPLIED). SEE DETAIL.

INTAKE VENT
2" PVC COUPLING
WITH VANE IN
VERTICAL POSITION.
SEE DETAIL B ON FIG. 1



EXHAUST VENT FOR
MODELS WITH INPUT OF
45,000-75,000 BTUH
DETAIL

FIGURE 3

ALTERNATE - RETROFIT VENT TERMINATION

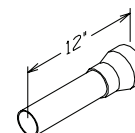
SEE DETAIL A
FIG. 1

2" COUPLING
MODELS WITH INPUTS OF
90,000 TO 120,000 BTUH

PIPE SUPPORT
STRAP

EXHAUST VENT
A.) 2" PVC FOR MODELS WITH INPUTS
OF 90,000 TO 120,000 BTUH
B.) REDUCE TO 1½" PVC FOR MODELS
WITH INPUTS OF 45,000 TO 75,000 BTUH
IMMEDIATELY OUTSIDE WALL (2" TO 1½"
REDUCER AND 1½" PVC PIPE SUPPLIED).
SEE DETAIL.

INTAKE VENT
2" PVC ELBOW WITH VANE
IN VERTICAL POSITION (ELBOW
AND VANE SUPPLIED).
SEE DETAIL B ON FIG. 1



EXHAUST VENT FOR
MODELS WITH INPUTS OF
45,000 TO 75,000 BTUH
DETAIL

FIGURE 4

ALTERNATE HORIZONTAL VENT TERMINATION

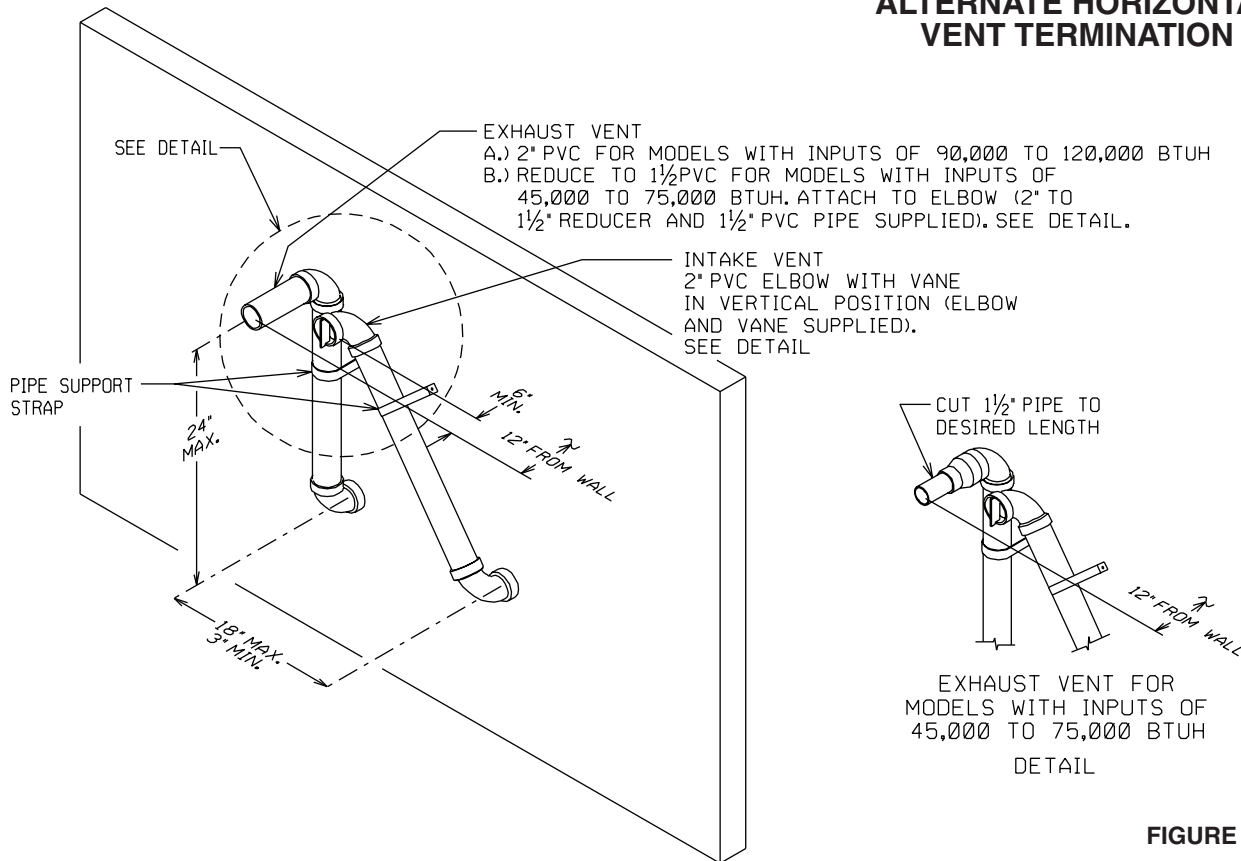


FIGURE 5

***NOTE:** THE 120,000 BTU MODEL OF THE NEW 34" 90 PLUS SERIES FURNACES, WITH EXCESSIVELY LONG RUNS, MUST USE KIT NO. RXGY-D04/D04A. THIS KIT PROVIDES 2 1/2" PIPE & ELBOWS.