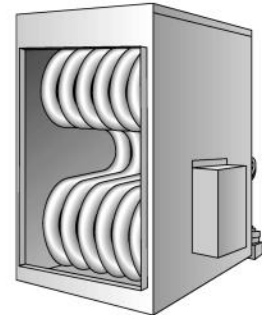
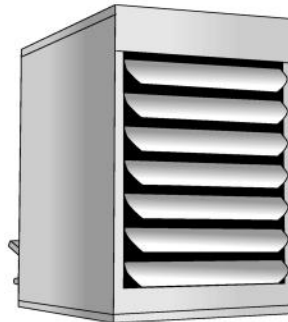


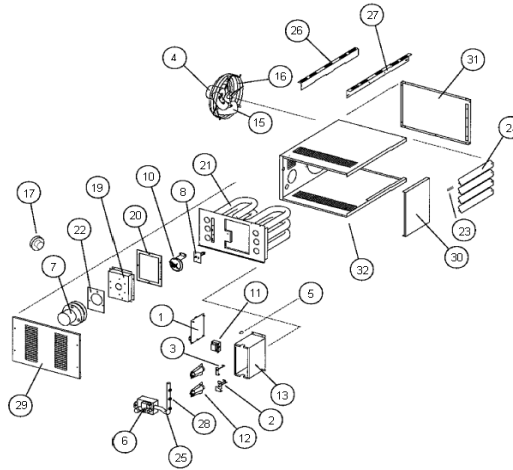
Unit Heater

Accessories & Replacement Parts



Contents	Page
CUH Unit Heater.....	2
FSA Unit Heater	4
SEP Unit Heater	
SEP 60 – 145.....	6
SEP 175 – 290.....	10
SEP 300 – 400.....	14
HED Duct Furnace	
HED 75 – 150	18
HED 200 – 300	20
FOA Unit Heater.....	22
UHRS Unit Heater	26
UHCM Unit Heater.....	27
FOA Venting Guidelines	28
SEP, HED, FSA, UHCM, UHRS Venting Guidelines.....	29
SEP, FSA, FOA Conversion Kits – LP and NG.....	30-31
UHRS, UHCM Conversion Kits – LP and NG	32

CUH



CUH UNIT HEATER

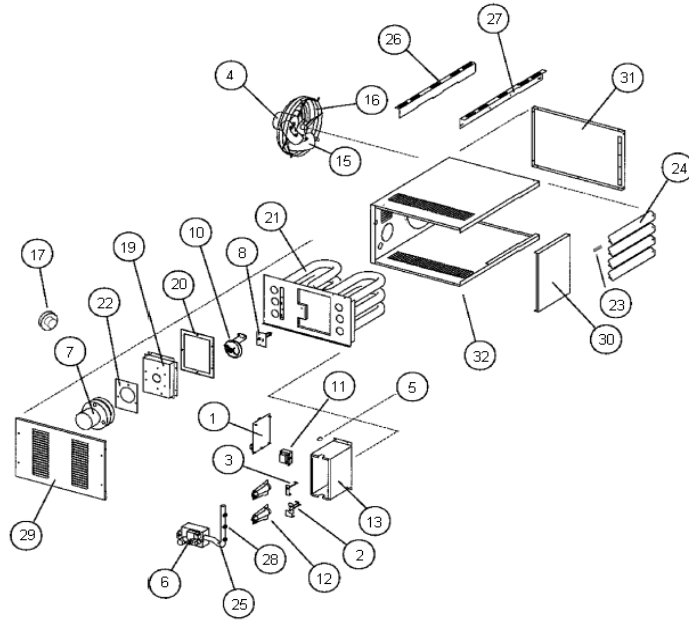
DRAWING NUMBER	DESCRIPTION	PART NUMBER	CUH30					CUH45					CUH60		CUH75			
			1	2	3	4	5	1	2	3	4	5	1	2	1	2		
1	CONTROL BOARD	176777500 76722700	X					X				X			X		X	
2	ELECTRODE/SPARK IGNITOR	176738700 76714900	X					X				X			X			X
3	ELECTRODE/FLAME SENSOR	76738800 76715000	X					X				X			X			X
4	FAN MOTOR (BLOWER MOTOR)	76791000 176700242		X					X					X				X
5	FLAME ROLLOUT SWITCH	176740200 176739900				X				X				2			2	
6	GAS VALVE (LP)	76717500		X					X				X				X	
6	GAS VALVE (NAT)	76714600		X					X				X				X	
28	ORIFICE (LP)	176717200 76724000		2					3				4				5	
28	ORIFICE (NAT)	176712200 76723700				2						3		4				5
Not Shown	IGNITION LEAD (WIRE, CABLE)	76715100		X					X				X				X	
Not Shown	Wiring Harness	176722900				X						X		X			X	
7	INDUCED DRAFT MOTOR ASSEMBLY(includes motor, housing, & blower wheel)	76739200		X					X				X				X	
8	LIMIT SWITCH	76739700		X					X				X				X	
10	PRESSURE SWITCH	176777300 76777400															X	
11	TRANSFORMER	76715500		X					X				X				X	
12	BURNER	76739500		2					3				4				5	
13	BURNER BOX	176773700 176773800		X					X				X				X	

CUH UNIT HEATER

DRAWING NUMBER	DESCRIPTION	PART NUMBER	CUH30					CUH45					CUH60		CUH75	
			1	2	3	4	5	1	2	3	4	5	1	2	1	2
15	FAN BLADE	176739100						X								
		176739600		X												
		176740000										X				
		176701184														X
16	FAN GUARD	176740100										X			X	
17	FLUE ADAPTER	176737800									X				X	
		176735000		X			X									
19	FLUE BOX	176740400		X			X									
		176741200									X					
		176741900													X	
20	FLUE BOX GASKET	176739300		X			X									
		176740300									X				X	
21	HEAT EXCHANGER	176700314		X												
		176781500					X									
		176784000									X					
		176768700													X	
22	INDUCED DRAFT GASKET	176708800		X			X			X			X			
23	LOUVER SPRING	76713500		4				4		6			6			
24	LOUVER VANE (BEIGE)	176741100		4				4		6			6			
25	MANIFOLD * For these models, you also need to order tapered thread orifices. (All new manifolds have tapered threads and will not fit with older orifices having straight threads).	176773900		X*	X											
		176774000					X*	X								
		176774100								X*	X					
		176774200											X*	X		
26	MOUNTING BRACKET, BACK	176750900		X			X			X			X			
27	MOUNTING BRACKET, FRONT	176750800		X			X			X			X			
29	PANEL, ACCESS	176740500		X			X									
		176758900								X			X			
30	PANEL, FRONT	176750700		X			X									
		176758800								X			X			
31	PANEL, SIDE	176750600		X			X									
		176758100								X			X			
32	WRAPPER, CABINET	176750400		X			X									
		176758700								X			X			

** Temporarily Unavailable

FSA



FSA UNIT HEATER

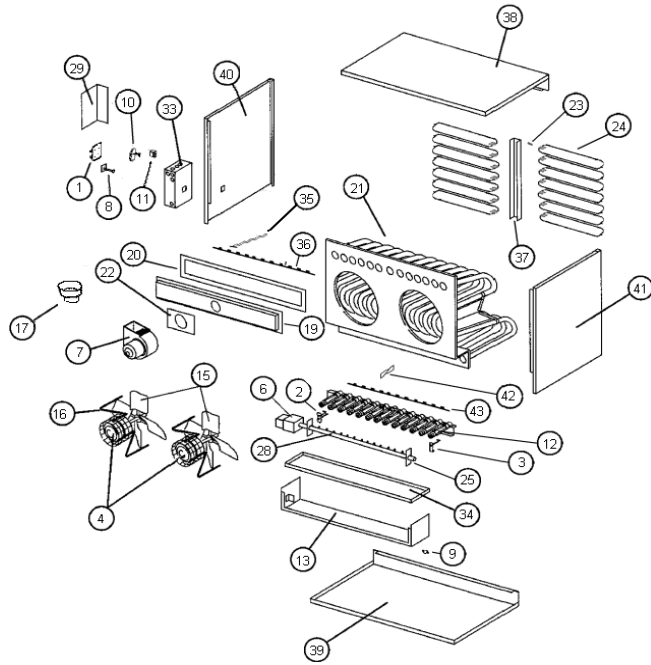
DRAWING NUMBER	DESCRIPTION	PART NUMBER	FSA30	FSA45	FSA60	FSA75
1	CONTROL BOARD					
		76722700			X	
2	ELECTRODE/SPARK IGNITER					
		76714900			X	
3	ELECTRODE/FLAME SENSOR					
		76715000			X	
4	FAN MOTOR (BLOWER MOTOR)					
		76791000	X	X		
		176700242			X	X
5	FLAME ROLLOUT SWITCH					
		176740200			2	2
		176739900	X	X		
6	GAS VALVE (LP)					
		76717500			X	
6	GAS VALVE (NAT)					
		76714600			X	
28	ORIFICE (LP)					
		76724000	2	3	4	5
28	ORIFICE (NAT)					
		76723700	2	3	4	5
Not Shown	IGNITION LEAD					
		76715100			X	
7	INDUCED DRAFT MOTOR ASSEMBLY (includes motor, housing, & blower wheel)					
		76739200			X	
8	LIMIT SWITCH					
		76739700			X	
10	PRESSURE SWITCH					
		176777300				X
		176777400	X	X	X	
11	TRANSFORMER					
		76715500			X	
12	BURNER					
		76739500	2	3	4	5
13	BURNER BOX					
		176773700	X	X		
		176773800			X	X

FSA UNIT HEATER

DRAWING NUMBER	DESCRIPTION	PART NUMBER	FSA30	FSA45	FSA60	FSA75
15	FAN BLADE					
		176739100		X		
		176739600	X			
		176740000			X	
		176701184				X
16	FAN GUARD					
		176740100			X	X
17	FLUE ADAPTER					
		176737800			X	X
		176735000	X	X		
19	FLUE BOX					
		176740400	X	X		
		176741200			X	
		176741900				X
20	FLUE BOX GASKET					
		176739300	X	X		
		176740300			X	X
21	HEAT EXCHANGER					
		176700314	X			
		176781500		X		
		176784000			X	
		176768700				X
22	INDUCED DRAFT GASKET					
		176708800	X	X	X	X
23	LOUVER SPRING					
		76713500	4	4	6	6
24	LOUVER VANE (BEIGE)					
		176741100	4	4	6	6
25	MANIFOLD					
		176773900	X			
		176774000		X		
		176774100			X	
		176774200				X
26	MOUNTING BRACKET, BACK					
		176750900			X	
27	MOUNTING BRACKET, FRONT					
		176750800			X	
29	PANEL, ACCESS					
		176740500	X	X		
		176758900			X	X
30	PANEL, FRONT					
		176750700	X	X		
		176758800			X	X
31	PANEL, SIDE					
		176750600	X	X		
		176758100			X	X
32	WRAPPER, CABINET					
		176750400	X	X		
		176758700			X	X
Not Shown	FLAME SENSOR WIRE					
		176738500			X	
Not Shown	WIRE HARNESS					
		176722900			X	X

* Temporarily Unavailable

SEP



SEP UNIT HEATER

SEP 60 - 145

DRAWING NUMBER	DESCRIPTION	PART NUMBER	SEP 60					SEP 90					SEP 100					SEP 115					SEP 145									
	ALUMINIZED STEEL HEAT EXCHANGER		1	2	3	4	5	1	2	3	4	5						1	2	3	4	5	1	2	3	4	5	1	2	3	4	5
	STAINLESS STEEL HEAT EXCHANGER					0	1				0	1									0	1				0	1				0	1
1	CONTROL BOARD																															
		10000240	X					X										X					X					X				
		176777500			X					X										X										X		
		76722700				X					X	X									X											X
2	ELECTRODE/SPARK IGNITER																															
		76714900			X					X					X					X					X					X		
3	ELECTRODE/FLAME SENSOR																															
		76715000			X					X					X					X					X					X		
4	FAN MOTOR (BLOWER MOTOR)																															
		76714500			X					X					X					X					X					X		
6	GAS VALVE (LP)																															
		76717500			X					X					X					X					X					X		
		176717600																														
6	GAS VALVE (NAT)																															
		76714600			X					X					X					X					X					X		
		76714800																														
28	ORIFICE (NAT)																															
	Straight thread	176712300																		4							5					
	Tapered thread	76723000																			4										5	
	Straight thread	176712200			4					6																						
	Tapered thread	76723700				4					6																					
	Straight thread	176712400																														
	Tapered thread	76723400										4																				
	Tapered thread	76723600*																														
28	ORIFICE (LP)																															
	Straight thread	176717200			4					6																						
	Tapered thread	76724000				4					6																					
	Tapered thread	176723500										4																				
	Straight thread	76717300																		4						5						
	Tapered thread	76723100																			4						5					
	Straight thread	176717400																														
	Tapered thread	176723300																														

* Temporarily Unavailable

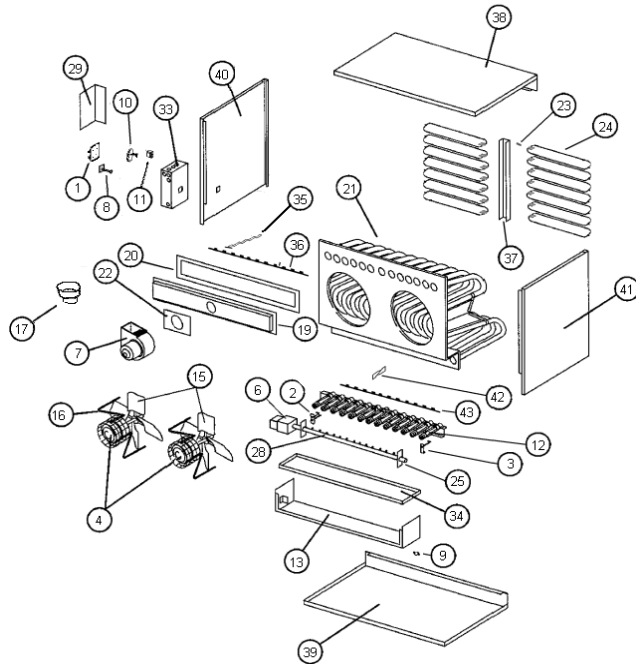
SEP UNIT HEATER

SEP 60 - 145

DRAWING NUMBER	DESCRIPTION	PART NUMBER	SEP 60					SEP 90					SEP 100					SEP 115					SEP 145							
			1	2	3	4	5	1	2	3	4	5	1	2	3	4	5	1	2	3	4	5	1	2	3	4	5			
	ALUMINIZED STEEL HEAT EXCHANGER																													
	STAINLESS STEEL HEAT EXCHANGER					0	1					0	1										0	1					0	1
29	CONTROL BOX COVER																													
		176712600				X					X					X					X					X				
33	CONTROL BOX																													
		176712500				X					X					X					X					X				
34	DRIP SHIELD																													
		176712700				X					X																			
		176712800											X								X					X				
		176712900																												
		176713000																												
35	FLUE BAFFLE																													
		176710400											4								4					5				
36	FLUE BAFFLE BRACKET																													
		176710500											X								X					X				
		176710600																												
37	LOUVER BRACKET																													
		176714100																												
38	PANEL, TOP																													
		176701000					X																							
		176700900											X								X									
		176701100																												
		176700800																												
39	PANEL, BOTTOM																													
		176701500					X																							
		176701300											X								X					X				
		176701400																												
		176701200																												
40	PANEL, LEFT SIDE (viewed from rear)																													
		176701900				X					X																			
		176702100											X								X					X				
		176702000																												
41	PANEL, RIGHT SIDE (viewed from rear)																													
		176701600				X					X																			
		176701800											X								X					X				
		176701800																												
42	TURBULATOR FOR NOX																													
		176717800											4								4					5				
43	TURBULATOR RETAINER																													
		176717900											X								X					X				
Not Shown	FAN TIMER																													
		100002477	X							X								X								X				
Not Shown	GAS PRESSURE SWITCH																													
		76717700				X					X		X								X					X				
Not Shown	IGNITION WIRE																													
		176727300*	X							X								X						X						
		76715100				X					X		X								X					X				
		76715200																												
Not Shown	FLAME SENSOR WIRE																													
		100000547	X							X								X						X						
		100000548																												
		176738500					X					X	X							X					X					
		176738600																												
Not Shown	WIRING HARNESS																													
		176722900					X					X	X									X			X					
		176717000																												
		176722800																												

* Temporarily Unavailable

SEP



SEP UNIT HEATER

SEP 175 - 290

DRAWING NUMBER	DESCRIPTION	PART NUMBER	SEP 175					SEP 200			SEP 230					SEP 250		SEP 290					
			1	2	3	4	5	1	2	3	1	2	3	4	5			1	2	3	4	5	
	ALUMINIZED STEEL HEAT EXCHANGER		1	2	3	4	5	1	2	3	1	2	3	4	5			1	2	3	4	5	
	STAINLESS STEEL HEAT EXCHANGER					0	1	1	2	3					0	1						0	1
1	CONTROL BOARD																						
		100000240		X							X	X						X					
		176777500			X			X				X								X			
		76722700				X			X					X	X								X
2	ELECTRODE/SPARK IGNITER																						
		76714900			X			X		X		X			X			X					X
3	ELECTRODE/FLAME SENSOR																						
		76715000			X			X		X		X			X			X					X
4	FAN MOTOR (BLOWER MOTOR)																						
		76714500			X			X		X		2			2			2					
6	GAS VALVE (LP)																						
		76717500			X			X															
		176717600										X			X								X
6	GAS VALVE (NAT)																						
		76714600			X			X															
		76714800										X			X								X
28	ORIFICE (NAT)																						
	Straight thread	176712300			6							8									10		
	Tapered thread	76723000				6								8									10
	Straight thread	176712200																					
	Tapered thread	76723700																					
	Straight thread	176712400						6															
	Tapered thread	76723400													10								
	Tapered thread	76723600*								6													
28	ORIFICE (LP)																						
	Straight thread	176717200																					
	Tapered thread	76724000																					
	Tapered thread	176723500													10								
	Straight thread	76717300			6							8									10		
	Tapered thread	76723100				6								8									10
	Straight thread	176717400						6															
	Tapered thread	176723300								6													

* Temporarily Unavailable

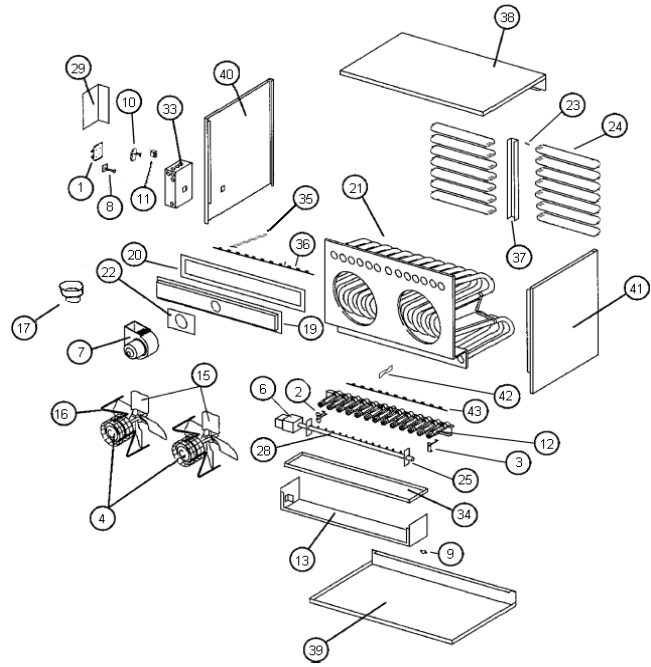
SEP UNIT HEATER

SEP 175 - 290

DRAWING NUMBER	DESCRIPTION	PART NUMBER	SEP 175					SEP 200			SEP 230					SEP 250		SEP 290						
			1	2	3	4	5	1	2	3	1	2	3	4	5	1	2	1	2	3	4	5		
	ALUMINIZED STEEL HEAT EXCHANGER																							
	STAINLESS STEEL HEAT EXCHANGER					0	1	1	2	3					0	1							0	1
7	INDUCED DRAFT MOTOR ASSEMBLY (includes motor, housing, & blower wheel)																							
		76746100																						
		76714300A		X				X				X				X						X		
		76738400																						
		76714200																						
8	LIMIT SWITCH												X									X		
		176716600												X									X	
		76716400						X				X												
		176716700	X								X					X	X							
		176716500			X																			
9	AUXILIARY LIMIT (ROLLOUT)												X			X						X		
		176717100											X			X						X		
10	PRESSURE SWITCH																							
		176776900		X				X			X											X		
		176777000														X								
		176777100																						
		176777200																						
		176777300																						
11	TRANSFORMER																							
		76715500		X				X			X					X						X		
12	BURNER																							
		76711200																						
		76711300		6				6			8					10						10		
15	FAN BLADE																							
		176710700																						
		176776400		X				X			X					X						X		
16	FAN GUARD																							
		176711000																						
		176711100		X				X			2					2						2		
17	FLUE ADAPTER																							
		1 76735000																						
		76708500																						
		76708600		X				X			X					X						X		
		76708700*																						
19	FLUE BOX																							
		176709100																						
		176709000																						
		176718900*																						
		176709200																						
		176719100																						
		176709300																						
		176721300	X																					
		176709400		X																				
		176709500*						X																
		176736600									X					X								
		176709600										X												
		176736700															X							
		176709700																				X		
		176709800																						
		176709900																						

* Temporarily Unavailable

SEP



SEP UNIT HEATER

SEP 300 - 400

DRAWING NUMBER	DESCRIPTION	PART NUMBER	SEP 300	SEP 345						SEP 400			
				1	2	3	4	5	6	1	2	3	4
	ALUMINIZED STEEL HEAT EXCHANGER			1	2	3	4	5	6	1	2	3	4
	STAINLESS STEEL HEAT EXCHANGER							0	1	1	2	3	4
1	CONTROL BOARD												
		10000240			X								
		176777500					X				X		
		76722700	X						X				X
2	ELECTRODE/SPARK IGNITER												
		76714900	X				X					X	
3	ELECTRODE/FLAME SENSOR												
		76715000	X				X					X	
4	FAN MOTOR (BLOWER MOTOR)												
		76714500	2				2					2	
6	GAS VALVE (LP)												
		76717500											
		176717600	X				X					X	
6	GAS VALVE (NAT)												
		76714600											
		76714800	X				X					X	
28	ORIFICE (NAT)												
	Straight thread	176712300					12						
	Tapered thread	76723000							12				
	Straight thread	176712200											
	Tapered thread	76723700											
	Straight thread	176712400										12	
	Tapered thread	76723400		12									
	Tapered thread	76723600*											12
28	ORIFICE (LP)												
	Straight thread	176717200											
	Tapered thread	76724000											
	Tapered thread	176723500		12									
	Straight thread	76717300					12						
	Tapered thread	76723100							12				
	Straight thread	176717400										12	
	Tapered thread	176723300											12

* Temporarily Unavailable

SEP UNIT HEATER

SEP 300 - 400

DRAWING NUMBER	DESCRIPTION	PART NUMBER	SEP 300	SEP 345						SEP 400					
				1	2	3	4	5	6	1	2	3	4		
	ALUMINIZED STEEL HEAT EXCHANGER														
	STAINLESS STEEL HEAT EXCHANGER							0	1			1	2	3	4
7	INDUCED DRAFT MOTOR ASSEMBLY (includes motor, housing, & blower wheel)														
		76746100													
		76714300A	X												
		76738400					X						X		
		76714200													
8	LIMIT SWITCH														
		176716600					X								
		76716400													
		176716700	X										X		
		176716500													
9	AUXILIARY LIMIT (ROLLOUT)														
		176717100	X				X						X		
10	PRESSURE SWITCH														
		176776900	X				X								
		176777000											X		
		176777100													
		176777200													
		176777300													
11	TRANSFORMER														
		76715500	X				X						X		
12	BURNER														
		76711200													
		76711300	12				12						12		
15	FAN BLADE														
		176710700													
		176776400	X				X						X		
16	FAN GUARD														
		176711000													
		176711100	2				2						2		
17	FLUE ADAPTER														
		1 76735000													
		76708500													
		76708600	X		X										
		76708700*					X						X		
19	FLUE BOX														
		176709100													
		176709000													
		176718900*													
		176709200													
		176719100													
		176709300													
		176721300													
		176709400													
		176709500*													
		176736600													
		176709600													
		176736700													
		176709700	X												
		176709800					X								
		176709900											X		

* Temporarily Unavailable

SEP UNIT HEATER

SEP 300 - 400

DRAWING NUMBER	DESCRIPTION	PART NUMBER	SEP 300	SEP 345						SEP 400				
				1	2	3	4	5	6	1	2	3	4	
	ALUMINIZED STEEL HEAT EXCHANGER													
	STAINLESS STEEL HEAT EXCHANGER							0	1		1	2	3	4
20	FLUE BOX GASKET													
		176710000												
		176710100												
		176710200												
		176710300	X			X					X			
22	INDUCED DRAFT MOTOR GASKET													
		176708800												
		176708900**	X			X					X			
Not Shown	SILICONE TUBING													
		176742001	X			X					X			
21	HEAT EXCHANGER (ALUMINIZED)													
		176707300												
		176707400												
		176707500												
		176707600												
		176707700												
		176707800												
		176707900												
		176708000	X			X					X			
21	HEAT EXCHANGER (STAINLESS)													
		176711400												
		176711500												
		176711600												
		176711700												
		176708100												
		176708200												
		176711900												
		176708300	X						X		X			
23	LOUVER SPRING													
		76713500	14			14					14			
24	LOUVER VANE, BEIGE													
		176713100												
		176713200												
		176713300												
		176713400	14			14					14			
25	MANIFOLD													
	* For these models, you also need to order tapered thread orifices. (All new manifolds have tapered threads and will not fit with older orifices having straight threads).	176724800												
		176724700												
		176724400												
		176724500												
		176724600												
		176724100												
		176724200												
		176724300	X			X *				X		X *		X

** Temporarily Unavailable

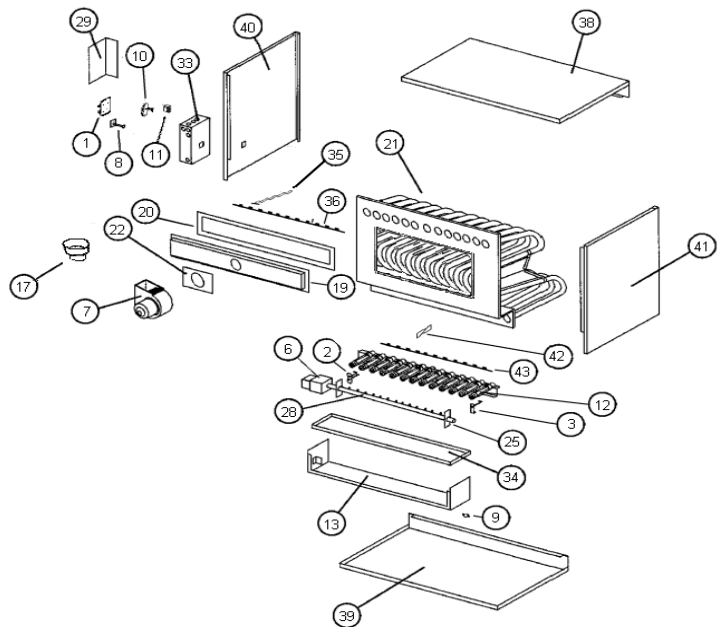
SEP UNIT HEATER

SEP 300 - 400

DRAWING NUMBER	DESCRIPTION	PART NUMBER	SEP 300	SEP 345						SEP 400				
				1	2	3	4	5	6	1	2	3	4	
	ALUMINIZED STEEL HEAT EXCHANGER													
	STAINLESS STEEL HEAT EXCHANGER							0	1		1	2	3	4
29	CONTROL BOX COVER													
		176712600	X				X					X		
33	CONTROL BOX													
		176712500	X				X					X		
34	DRIP SHIELD													
		176712700												
		176712800												
		176712900												
		176713000	X				X					X		
35	FLUE BAFFLE													
		176710400	12				12					12		
36	FLUE BAFFLE BRACKET													
		176710500												
		176710600	X				X					X		
37	LOUVER BRACKET													
		176714100	X				X					X		
38	PANEL, TOP													
		176701000												
		176700900												
		176701100												
		176700800	X				X					X		
39	PANEL, BOTTOM													
		176701500												
		176701300												
		176701400												
		176701200	X				X					X		
40	PANEL, LEFT SIDE (viewed from rear)													
		176701900												
		176702100												
		176702000	X				X					X		
41	PANEL, RIGHT SIDE (viewed from rear)													
		176701600												
		176701800												
		176701800	X				X					X		
42	TURBULATOR FOR NOX													
		176717800	12				12					12		
43	TURBULATOR RETAINER													
		176717900	2				2					2		
Not Shown	FAN TIMER													
		100002477				X								
Not Shown	GAS PRESSURE SWITCH													
		76717700												
Not Shown	IGNITION WIRE													
		176727300*				X								
		76715100												
		76715200	X				X					X		
Not Shown	FLAME SENSOR WIRE													
		100000547												
		100000548				X								
		176738500												
		176738600	X							X				X
Not Shown	WIRING HARNESS													
		176722900												
		176717000					X					X		
		176722800	X							X				X

* Temporarily Unavailable

HED



HED DUCT FURNACE HED 75 - 150

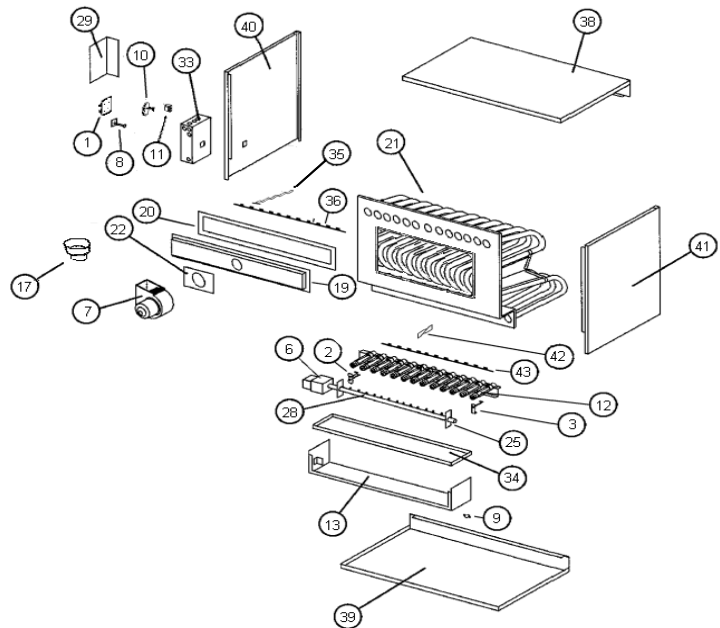
DRAWING NUMBER	DESCRIPTION	PART NUMBER	HED75			HED100			HED125			HED150		
			1	2	3	1	2	3	1	2	3	1	2	3
1	CONTROL BOARD													
		100000240	X			X			X			X		
		176777500		X			X			X			X	
		76722700			X			X			X			X
2	ELECTRODE/SPARK IGNITER													
		76714900		X			X			X			X	
3	ELECTRODE/FLAME SENSOR													
		76715000		X			X			X			X	
6	GAS VALVE (NAT)													
		76714600		X			X			X			X	
		76714800												
28	ORIFICE (NAT)													
	Straight thread	176719400		6										
	Tapered thread	176723900			6									
	Straight thread	176719500					4			5			6	
	Tapered thread	76723400						4			5			6
7	INDUCED DRAFT MOTOR ASSEMBLY (includes motor, housing, & blower wheel)													
		76746100		X			X			X			X	
		76714300A												
8	LIMIT SWITCH													
		176716600		X										
		76716400												
		176716700												
		176716500					X			X			X	
9	AUXILIARY LIMIT													
		176717100												
10	PRESSURE SWITCH													
		176777100		X										
		176722500					X						X	
		176722600								X				
		176776900												
11	TRANSFORMER													
		76715500		X			X			X			X	
12	BURNER													
		76711300					4			5			6	
		76711200		6										
17	FLUE ADAPTER													
		76708500		X			X			X			X	
		76708600												

HED DUCT FURNACE HED 75 - 150

DRAWING NUMBER	DESCRIPTION	PART NUMBER	HED75			HED100			HED125			HED150		
			1	2	3	1	2	3	1	2	3	1	2	3
19	FLUE BOX	176718900**					X							
		176712100		X										
		176718800							X					
		176721400												
		176721500**												
		176719100											X	
		176721300												
20	FLUE BOX GASKET	176710000		X										
		176710100					X			X				
		176710200											X	
		176710300												
21	HEAT EXCHANGER (ALUM)	176719700		X										
		176719800					X							
		176719900								X				
		176720000											X	
		176720100												
		176720200												
		176720300												
21	HEAT EXCHANGER (STAINLESS)	176720400		X										
		176720500					X							
		176720600								X				
		176720700											X	
		176720800												
		176720900												
		176721000												
22	INDUCED DRAFT GASKET	176708800		X			X			X			X	
		176708900**												
25	MANIFOLD	176724700		X *	X									
	* For these models, you also need to order tapered thread orifices. (All new manifolds have tapered threads and will not fit with older orifices having straight threads).	176724400					X *	X						
		176724500								X *	X			
		176724600											X *	X
		176724100												
		176724200												
		176724300												
29	CONTROL BOX COVER	176712600		X			X			X			X	
33	CONTROL BOX	176712500		X			X			X			X	
38	PANEL, TOP	176701000		X										
		176700900					X			X				
		176701100											X	
		176700800												
39	PANEL, BOTTOM	176701500		X										
		176701300					X			X				
		176701400											X	
		176701200												
40	PANEL, LEFT SIDE (as viewed from rear)	176701900		X										
		176702100					X			X			X	
		176702000												
41	PANEL, RIGHT SIDE (as viewed from rear)	176701600		X										
		176701800					X			X			X	
Not Shown	FAN TIMER	100002477		X			X			X			X	
Not Shown	IGNITION WIRE	176727300		X			X			X			X	
		76715100			X			X			X			X
		76715200												
Not Shown	FLAME SENSOR WIRE	100000547		X			X			X			X	
		100000548												
		176738500			X			X			X			X
		176738600												

** Temporarily Unavailable

HED



HED DUCT FURNACE HED 200 - 300

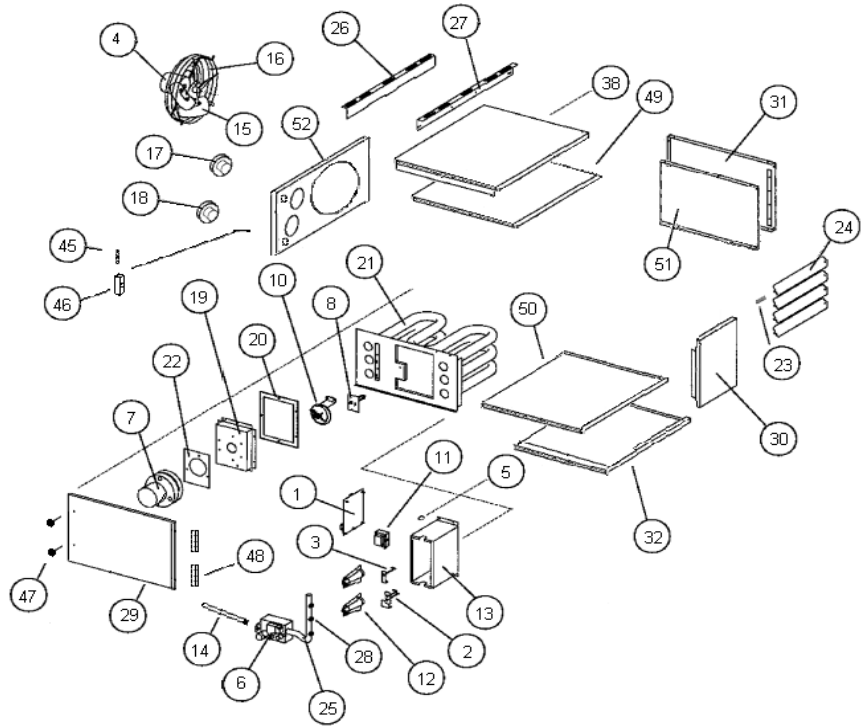
DRAWING NUMBER	DESCRIPTION	PART NUMBER	HED200			HED250			HED300		
			1	2	3	1	2	3	1	2	3
1	CONTROL BOARD										
		100000240	X			X			X		
		176777500		X			X			X	
		76722700			X			X			X
2	ELECTRODE/SPARK IGNITER										
		76714900		X			X			X	
3	ELECTRODE/FLAME SENSOR										
		76715000		X			X			X	
6	GAS VALVE (NAT)										
		76714600									
		76714800		X			X			X	
28	ORIFICE (NAT)										
	Straight thread	176719400									
	Tapered thread	176723900									
	Straight thread	176719500		8			10			12	
	Tapered thread	76723400			8			10			12
7	INDUCED DRAFT MOTOR ASSEMBLY (includes motor, housing, & blower wheel)										
		76746100									
		76714300A		X			X			X	
8	LIMIT SWITCH										
		176716600									
		76716400								X	
		176716700					X				
		176716500		X							
9	AUXILIARY LIMIT										
		176717100		X			X			X	
10	PRESSURE SWITCH										
		176777100									
		176722500									
		176722600									
		176776900		X			X			X	
11	TRANSFORMER										
		76715500		X			X			X	
12	BURNER										
		76711300		8			10			12	
		76711200									
17	FLUE ADAPTER										
		76708500									
		76708600		X			X			X	

HED DUCT FURNACE HED 200 - 300

DRAWING NUMBER	DESCRIPTION	PART NUMBER	HED200			HED250			HED300		
			1	2	3	1	2	3	1	2	3
19	FLUE BOX	176718900**									
		176712100									
		176718800									
		176721400					X				
		176721500**								X	
		176719100									
		176721300		X							
20	FLUE BOX GASKET	176710000									
		176710100									
		176710200									
		176710300		X			X			X	
21	HEAT EXCHANGER (ALUM)	176719700									
		176719800									
		176719900									
		176720000									
		176720100		X							
		176720200					X				
		176720300								X	
21	HEAT EXCHANGER (STAINLESS)	176720400									
		176720500									
		176720600									
		176720700									
		176720800		X							
		176720900					X				
		176721000								X	
22	INDUCED DRAFT GASKET	176708800									
		176708900**		X			X			X	
25	MANIFOLD	176724700									
	* For these models, you also need to order tapered thread orifices. (All new manifolds have tapered threads and will not fit with older orifices having straight threads).	176724400									
		176724500									
		176724600									
		176724100		X*	X						
		176724200					X*	X			
		176724300								X*	X
29	CONTROL BOX COVER	176712600		X			X			X	
33	CONTROL BOX	176712500		X			X			X	
38	PANEL, TOP	176701000									
		176700900									
		176701100									
		176700800		X			X			X	
39	PANEL, BOTTOM	176701500									
		176701300									
		176701400									
		176701200		X			X			X	
40	PANEL, LEFT SIDE (as viewed from rear)	176701900									
		176702100									
		176702000		X			X			X	
41	PANEL, RIGHT SIDE (as viewed from rear)	176701600									
		176701800									
Not Shown	FAN TIMER	100002477	X				X			X	
Not Shown	IGNITION WIRE	176727300	X				X			X	
		76715100									
		76715200		X			X			X	
Not Shown	FLAME SENSOR WIRE	100000547									
		100000548	X				X			X	
		176738500									
		176738600			X			X			X

** Temporarily Unavailable

FOA



FOA UNIT HEATER

DRAWING NUMBER	DESCRIPTION	PART NUMBER	FOA 45	FOA 60	FOA 75	FOA 100	FOA 125	FOA 150	FOA 200	FOA 250	FOA 300
1	CONTROL BOARD										
		76722700					X				
	WIRE HARNESS 6-PIN										
		176722900					X				
45	24V TERMINAL BOARD										
		176700060					X				
	DOOR SWITCH										
		76729900A					X				
2	ELECTRODE/SPARK IGNITER										
		176700050					X				
	WIRE, IGNITION cable										
		76715100					X				
3	ELECTRODE/FLAME SENSOR										
		176700051					X				
	WIRE, FLAME SENSE										
		176738500					X				
4	FAN MOTOR (BLOWER MOTOR)										
		76791000	X								
		176700242		X	X	X	X			X	2
		76714500						X	X		
5	FLAME ROLLOUT SWITCH										
		176739900	1								
		176740200		2	2	1	1				
6	GAS VALVE (LP)										
		76717500				X					
		176700264									X
6	GAS VALVE (NAT)										
		76714600				X					
		176700265									X
28	ORIFICE (LP)										
		76724000	3	4	5						
		176723500				4	5	6		10	
		76723100							7		11

FOA UNIT HEATER

DRAWING NUMBER	DESCRIPTION	PART NUMBER	FOA 45	FOA 60	FOA 75	FOA 100	FOA 125	FOA 150	FOA 200	FOA 250	FOA 300
28	ORIFICE (NAT)	76723700	3	4							
		176700281			5						
		76723400				4	5				
		176700263						6			11
		76723600*							7		
		76723400								10	
7	INDUCED DRAFT MOTOR ASSEMBLY (includes motor, housing, & blower wheel)	76739200	X	X	X						
		76714300A				X	X	X	X	X	X
8	LIMIT SWITCH	76739700	X	X	X						
		76716400				X	X	X	X		X
		176716500								X	
10	PRESSURE SWITCH	176777400	X	X							
		76777300			X						
		176722600				X					
		176700096					X				
		176776900						X	X		
		76777000								X	
		176700236									X
46	ELECTRICAL BOX	176700056						X			
Not Shown	ELECTRICAL BOX COVER	176700057						X			
11	TRANSFORMER	76715500						X			
12	BURNER INSHOT	76739500	3	4	5						
		76711300				4	5	6	7	10	11
13	BURNER BOX	176773700	X								
		176773800		X	X						
Not Shown	BURNER SUPPORT PLATE	176700272				X	X				
		176700237						X	X		
		176700239								X	X
Not Shown	BURNER BOX TOP	176700085	X								
		176700086		X							
		176700087			X						
15	FAN BLADE	176739100	X								
		176740000		X							
		176701184			X						
		176776400				X	X			X	X
		176700250						X	X		
16	FAN GUARD	176740100			X						
		176700059				X	X				
		176700249						X	X		
		176711100								X	2

* Temporarily Unavailable

FOA UNIT HEATER

DRAWING NUMBER	DESCRIPTION	PART NUMBER	FOA 45	FOA 60	FOA 75	FOA 100	FOA 125	FOA 150	FOA 200	FOA 250	FOA 300
17	INLET AIR ADAPTER	176700279	X								
		176700231						X			
Not Shown	INLET AIR ADAPTER GASKET	176700063	X								
		176700062						X			
18	FLUE ADAPTER	176735000	X								
		176737800		X	X						
		76708600				X	X	X	X	X	
		76708700*									X
19	FLUE BOX	176700102	X								
		176700103		X							
		176700104			X						
		176700033				X					
		176700034					X				
		176700247						X			
		176700248							X		
		176700258								X	
		176700259									X
20	FLUE BOX GASKET	176739300	X								
		176740300		X	X						
		176700058				X	X				
		176700253						X	X		
		176700254								X	X
21	HEAT EXCHANGER ASSEMBLY	176700067	X								
		176700069		X							
		176700053				X					
		176700054					X				
		176700232						X			
		176700233							X		
		176700234								X	
		176700235									X
22	INDUCED DRAFT GASKET	176739300	X								
		176708800		X	X						
		176708900*				X	X	X	X	X	X
54	INDUCED DRAFT MOTOR PLATE	176700105	X	X	X						
53	GASKET INDUCED DRAFT MOTOR PLATE	176700106	X	X	X						
23	LOUVER SPRING	76713500	4	6	6	6	6	8	8	12	12
24	LOUVER VANE (BEIGE)	176741100	4	6	6						
		176713100				6	6	8	8	12	12
25	MANIFOLD	176774000	X								
		176774100		X							
		176774200			X						
		176700046				X					
		176700280					X				
		176700261								X	
		176700262									X
14	MANIFOLD CONNECTION	176700048	X	X	X						
		176700040				X	X	X	X		
		176700230								X	X

* Temporarily Unavailable

FOA UNIT HEATER

DRAWING NUMBER	DESCRIPTION	PART NUMBER	FOA 45	FOA 60	FOA 75	FOA 100	FOA 125	FOA 150	FOA 200	FOA 250	FOA 300
Not Shown	MANIFOLD GROMMET	176700047	X	X	X	X	X	X	X		
		176700278								X	X
26	MOUNTING BRACKET, BACK	176750900	X	X	X						
27	MOUNTING BRACKET, FRONT	176750800	X	X	X						
30	FRONT PANEL	176700079	X								
		176700031		X	X						
		176700037				X	X				
		176700244						X	X		
		176700256								X	X
38	TOP PANEL	176700098	X	X	X						
		176700035				X	X	X	X	X	X
32	BOTTOM PANEL	176700099	X	X	X						
		176700229				X	X	X	X		
		176700241								X	X
50	TOP / BOTTOM INSULATING PANEL	176700070	X	X	X						
		176700282				X	X	X	X	X	X
31	SIDE PANEL	176700080	X								
		176700073		X	X						
		176700038				X	X				
		176700245						X	X		
		176700260								X	X
51	SIDE INSULATING PANEL	176700081	X								
		176700071		X	X						
		176700043				X	X				
		176700246						X	X		
		176700284								X	X
52	FAN PANEL	176700097	X								
		176700101		X	X						
		176700036				X	X				
		176700243						X	X		
29	ACCESS DOOR	176700076	X								
		176700075		X	X						
		176700074				X	X				
		176700285						X	X		
		176700286								X	X
Not Shown	SIGHT GLASS	176700042					X				

UHRS

UHRS UNIT HEATER

DESCRIPTION	PART NUMBER	UHRS30	UHRS45	UHRS60	UHRS75	UHRS90	UHRS105
CONTROL BOARD	176701586	X	X	X	X	X	X
WIRING HARNESS	176792900	X	X				
	176793000			X	X		
	176793100					X	X
WIRING HARNESS, TRANSFORMER	176702200	X	X	X	X	X	X
ELECTRODE/FLAME SENSOR	176701611	X					
ELECTRODE/SPARK IGNITER	176701587	X					
FAN MOTOR (BLOWER MOTOR)	176701588	1	1				
	176701612			1	1		
	176701590					1	1
FLAME ROLLOUT SWITCH	176700252	X					
	176701591		X			X	X
	176701592			X	X		
GAS VALVE (LP)	176701593	X	X	X	X	X	X
GAS VALVE (NAT)	176701594	X	X	X	X	X	X
ORIFICE (LP)	176701595	2	3	4	5	7	7
ORIFICE (NAT)	176701596	2	3	4	5	7	7
IGNITION LEAD	176701597	X	X	X	X	X	X
INDUCED DRAFT MOTOR ASSEMBLY (includes motor, housing, & blower wheel)	176701598	X*	X*	X	X	X	X
	176795005 *After Ser # 7120K10000	X*	X*				
LIMIT SWITCH	176701599	X	X	X			
	176701630				X		X
	176795004					X	
PRESSURE SWITCH	176701601	X	X	X			X
	176701602				X		
	176701603					X	
TRANSFORMER	176701604	X	X	X	X	X	X
FAN BLADE	176701605	1	1				
	176701606			1	1		
	176701607					1	1
FAN GUARD	176701608**	1	1				
	176701609**			1	1		
	176701610**					1	1
LOUVER SPRING	176701613	X	X	X	X	X	X
LOUVER VANE	176793400	3	3	5	5	7	7
MOUNTING BRACKET	176700255	2	2	2	2	2	2
POWER/THERMO TERMINAL	176792800	X	X	X	X	X	X
BURNER	176727400	X					
	176727500		X				
	176727600			X			
	176727700				X		
	176727800					X	
	176727900						X
MANIFOLD	176728900	X					
	176728800		X				
	176729100			X			
	176729000				X		
	176729300					X	
	176729200						X
ALUMINIZED STEEL HEAT EXCHANGER	176730200	X					
	176730300		X				
	176730400			X			
	176730500				X		
	176730600					X	
	176730700						X

** Temporarily Unavailable

UHCM

UHCM UNIT HEATER

DESCRIPTION	PART NUMBER	UHCM 125	UHCM 150	UHCM 175	UHCM 200	UHCM 250	UHCM 300	UHCM 350	UHCM 400
CONTROL BOARD	176701586	X	X	X	X	X	X	X	X
WIRING HARNESS	176793500	X	X	X	X				
	176793600					X	X	X	X
ELECTRODE/SPARK IGNITER	176701615	X	X	X	X	X	X	X	X
ELECTRODE/FLAME SENSOR	176701616	X	X	X	X	X	X	X	X
IGNITION LEAD	176793700	X	X	X	X	X	X	X	X
FAN MOTOR (BLOWER MOTOR)	176701617	1	1			2	2		
	176701618			1	1			2	2
GAS VALVE (LP)	176701593	X	X	X	X				
	176701620					X	X	X	X
GAS VALVE (NAT)	176701594	X	X	X	X				
	176701622					X	X	X	X
ORIFICE (LP)	176701623	5	6	7	8				
	176701624					5	6	7	8
ORIFICE (NAT)	176701625	5	6	7	8				
	176701626					10	12	14	16
INDUCED DRAFT MOTOR ASSEMBLY (includes motor, housing, & blower wheel)	176701627	X	X	X	X				
	176701628					X	X	X	X
FLAME ROLLOUT SWITCH	176700251	X	X	X	X	X	X	X	X
LIMIT SWITCH	176701599	X	X	X					
	176701630				X				
	176701631					X	X	X	X
PRESSURE SWITCH	176701632	X							
	176701633		X	X					
	176701634				X	X			
	176701635						X		
	176701636							X	
176701637								X	
TRANSFORMER	176701604	X	X	X	X	X	X	X	X
FAN BLADE	176701648	1	1	1	1	2	2	2	2
	176701639			1	1			2	2
FLUE ADAPTER	176701585			X	X	X	X		
	176701647							X	X
LOUVER SPRING	176701613	X	X	X	X	X	X	X	X
LOUVER VANE	176794000	9	9			18	18		
	176794100			9	9				
	176794200							18	18
POWER/THERMO TERMINAL	176792800	X	X	X	X	X	X	X	X

UHCM

UHCM UNIT HEATER

DESCRIPTION	PART NUMBER	UHCM 125	UHCM 150	UHCM 175	UHCM 200	UHCM 250	UHCM 300	UHCM 350	UHCM 400
BURNER	176728000	X							
	176728100		X						
	176728200			X					
	176728300				X				
	176728400					X			
	176728500						X		
	176728600							X	
	176728700								X
MANIFOLD	176729500	X							
	176729400		X						
	176729700			X					
	176729600				X				
	176730100					X			
	176730000						X		
	176729900							X	
	176729800								X
ALUMINIZED STEEL HEAT EXCHANGER	176730800	X							
	176731000		X						
	176731200			X					
	176731400				X				
	176731600					X			
	176731800						X		
	176732000							X	
	176732200								X
Stainless Steel Heat Exchanger	176730900	X							
	176731100		X						
	176731300			X					
	176731500				X				
	176731700					X			
	176731900						X		
	176732100							X	
	176732300								X

FOA - VENTING GUIDELINES

	Model Size (1000s BTUH)	Termination Type	Flue		Inlet air		Approved Caps	
			Material	Size	Material	Size	Flue	Inlet air
			FOA Horizontal Commercial Applications	45	Two pipe	Single wall	3"	Single wall
Cat. III	Cat. III							
Concentric	Single wall	* 3"		Single wall	* 3"	Concentric vent kit (4"/7")		
	Cat. III							
60, 75	Two pipe	Single wall		4"	Single wall	4"	Tee	Tee
		Cat. III					Cat. III	
Concentric	Single wall	4"	Single wall	4"	Concentric vent kit (4"/7")			
	Cat. III							
100, 125	Two pipe	Single wall	5"	Single wall	4"	Tee	Tee	
		Cat. III				Cat. III		
Concentric	Not available							
150,200,250	Two pipe	Single wall	5"	Single wall	4"	Tee	Tee	
		Cat. III				Cat. III		
Concentric	Single wall	5"	Single wall	** 4"	Concentric vent kit (5"/8")			
	Cat. III				Not Available			
300	Two pipe	Single wall	6"	Single wall	4"	Tee	Tee	
		Cat. III				Cat. III		
Concentric	Not available							

	Model Size (1000s BTUH)	Termination Type	Flue		Inlet air		Approved Caps	
			Material	Size	Material	Size	Flue	Inlet air
			FOA Vertical Commercial Applications	45	Two Pipe	Single wall	3"	Single wall
Double Wall (B-1)								
Concentric	Single wall	* 3"		Single wall	* 3"	Concentric vent kit (4"/7")		
	Double Wall (B-1)							
60, 75	Two Pipe	Single wall		4"	Single wall	4"	Any UL approved caps	
		Double Wall (B-1)						
Concentric	Single wall	4"	Single wall	4"	Concentric vent kit (4"/7")			
	Double Wall (B-1)							
100, 125	Two Pipe	Single wall	5"	Single wall	4"	Any UL approved caps		
		Double Wall (B-1)						
Concentric	Single wall	5"	Single wall	** 4"	Concentric vent kit (5"/8")			
	Double Wall (B-1)							
150,200,250	Two Pipe	Single wall	5"	Single wall	4"	Any UL approved caps		
		Double Wall (B-1)						
Concentric	not available							
300	Two Pipe	Single wall	6"	Single wall	4"	Any UL approved caps		
		Double Wall (B-1)						
Concentric	not available							

	Model Size (1000s BTUH)	Termination Type	Flue		Inlet air		Approved Caps	
			Material	Size	Material	Size	Flue	Inlet air
			FOA Horizontal Residential Applications	45	Two pipe	Cat. III	* 3"	Single wall
60, 75	Two pipe	Cat. III	4"	Single wall	4"	Cat. III	Tee	
100, 125	Two pipe	Cat. III	5"	Single wall	4"	Cat. III	Tee	

	Model Size (1000s BTUH)	Termination Type	Flue		Inlet air		Approved Caps	
			Material	Size	Material	Size	Flue	Inlet air
			FOA Vertical Residential Applications	45	Two Pipe	Double Wall (B-1)	3"	Single wall
Concentric	Double Wall (B-1)	* 3"			Single wall	* 3"	Concentric vent kit (4"/7")	
60, 75	Two Pipe	Double Wall (B-1)	4"	Single wall	4"	Any UL approved caps		
		Concentric	Double Wall (B-1)	4"	Single wall	4"	Concentric vent kit (4"/7")	
100, 125	Two Pipe	Double Wall (B-1)	5"	Single wall	4"	Any UL approved caps		
		Concentric	Double Wall (B-1)	5"	Single wall	** 4"	Concentric vent kit (5"/8")	

* Field supplied 3" to 4" increaser required for connection to concentric adapter

** Field supplied 4" to 5" increaser required for connection to concentric adapter

Note: Vent cap (for two pipe venting systems) 2 required per system

SEP, UHCM, HED - VENTING GUIDELINES

SEP, UHCM & HED Commercial Applications Only *	Model Size (1000s BTUH)	Horizontal Venting			Vertical Venting		
		Material	Size	Approved Caps	Material	Size	Approved Caps
75 - 150	Single wall	4"	Tee	Single wall	4"	Any UL approved caps	
	Cat. III		Cat. III	Double Wall (B-1)			
175 - 300	Single wall	5"	Tee	Single wall	5"	Any UL approved caps	
	Cat. III		Cat. III	Double Wall (B-1)			
345 - 400	Single wall	6"	Tee	Single wall	6"	Any UL approved caps	
	Cat. III		Cat. III	Double Wall (B-1)			

* SEP and HED unit heaters are not approved for residential applications.

FSA, UHRS - VENTING GUIDELINES

FSA, UHRS Commercial Applications	Model Size (1000s BTUH)	Horizontal Venting			Vertical Venting		
		Material	Size	Approved Caps	Material	Size	Approved Caps
30, 45	Single wall	3"	Tee	Single wall	3"	Any UL approved caps	
	Cat. III		Cat. III	Double Wall (B-1)			
60, 75	Single wall	4"	Tee	Single wall	4"	Any UL approved caps	
	Cat. III		Cat. III	Double Wall (B-1)			

FSA, UHRS Residential Applications	Model Size (1000s BTUH)	Horizontal Venting			Vertical Venting		
		Material	Size	Approved Caps	Material	Size	Approved Caps
30, 45	Cat. III	3"	Cat. III	Double Wall (B-1)	3"	Any UL approved caps	
60, 75	Cat. III	4"	Cat. III	Double Wall (B-1)	4"	Any UL approved caps	

LP FUEL CONVERSION KITS

LP Conversion Kit Part # (not available for SEP 60, 90)	Used On Models	Includes	Ship Weight
165296401	SEP 100	1 Honeywell Spring Kit, 1 Spring Kit, 6 #52 Tapered Orifices, 1 LP Pressure Switch, 1 A-Nipple LP Pressure Switch, 1 Elbow-LP Pressure Switch, 1 B-Nipple LP Pressure Switch, 6 Turbulators	2 lbs.
165295202	SEP 115, 145 & 175	1 393691 Honeywell Spring Kit, 1 92-0836 White Rogers Spring Kit, 6 #52 Tapered Orifices (Part # 76723100), 1 LP Pressure Switch, 1 A-Nipple LP Pressure Switch, 1 Elbow-LP Pressure Switch, 1 B-Nipple LP Pressure Switch, 6 Turbulators, 6 Turbulator Clips	2 lbs.
165295203*	SEP 230, 290 & 345	1 LP Gas Valve (Part # 76717600), 12 #52 Tapered Orifices (Part # 76723100), 12 Turbulators, 12 Turbulator Clips	3 lbs.
165295205	SEP-200	1 393691 Honeywell Spring Kit, 1 92-0836 White Rogers Spring Kit, 6 .068 Tapered Orifices (Part # 76723300)	2 lbs.
165296403*	SEP-250, 300	1 LP Gas Valve (Part # 76717600), 12 #53 Tapered Orifices (Part # 76723500), 12 Turbulators, 12 Turbulator Clips	3 lbs.
165295206	SEP-400	1 LP Gas Valve (Part # 76717600), 12 Tapered Orifices (Part # 76723300)	2 lbs.
165295204*	CUH/FSA (all models)	1 393691 Honeywell Spring Kit (Part # 76757900), 1 92-0836 White Rogers Spring Kit (Part # 76757900), 1 Robert Shaw Spring Kit (Part #76768500), 5 #56 Tapered Orifices (Part # 76724000)	2 lbs.
165296405	FOA 45, 60 & 75	5 #56 Orifices (Part # 76724000), 1 White Rogers Spring Kit (Part # 76759100)	2 lbs.
165336303*	FOA 100, 125, 150, 250	10 #53 Orifices (Part #76723500), 1 Honeywell Spring Kit (Part # 76759100)	2 lbs.
165336304	FOA 200 & 300	11 # 52 Orifices (Part # 76723100), 1 Honeywell Spring Kit (Part #76759100)	2 lbs.

* Temporarily Unavailable

LP Kits are not designed for and should not be used on HED duct furnaces.

LP & NG Kits have tapered thread orifices and will not fit older models with straight threads.

NG FUEL CONVERSION KITS & MOUNTING BRACKETS

NG Conversion Kit Part # (not available for SEP 90, 100, 250, 300, and CUH units)	Used On Models	Includes	Ship Weight
Kit not yet available. Components are listed at right.	SEP 100	6 Tapered Orifices (Part # 76723400), 1 Natural Gas Valve (Part # 76714600)	TBD
160000001	SEP 115, 145, 175	6 Tapered Orifices (Part # 76723000), 1 Natural Gas Valve (Part # 76714600)	2 lbs.
160000002*	SEP 200	7 Tapered Orifices (Part # 76723600), 1 Natural Gas Valve (Part # 76714600)	2 lbs.
160000003	SEP 230, 290, 345	12 Tapered Orifices (Part # 76723000), 1 Natural Gas Valve (Part # 76714800)	2 lbs.
Kit not yet available. Components are listed at right.	SEP 250, 300	12 Tapered Orifices (Part # 76723400), 1 Natural Gas Valve (Part # 76714800)	TBD
160000004	SEP 400	12 Tapered Orifices (Part # 76723300), 1 Natural Gas Valve (Part # 76714800)	2 lbs.

* Temporarily Unavailable

LP & NG Kits have tapered thread orifices and will not fit older models with straight threads.

Description	Part #	Used On Models	Ship Weight
Mounting Bracket Kit	100001381	SEP 230 thru SEP400 and HED	9 lbs.

UHRS & UHCM

FUEL CONVERSION KITS

LP Kits

Description	Kit Part #	Altitudes		Used On Models
		US	CANADA	
LP Conversion Kit	176701643	0 - 5,000ft	0 - 7,500ft	UHRS (All Models)
LP High Altitude Conversion Kit	176795200	5,000 - 8,000ft	n/a	
LP High Altitude Conversion Kit	176795300	8,000 - 10,000ft	0 - 7,500ft	
LP High Altitude Conversion Kit	176795400	n/a	7,501 - 9,500ft	
LP Conversion Kit	176701641	0 - 5,000ft	0 - 7,500ft	UHCM 125 - 200
LP High Altitude Conversion Kit	176795500	5,000 - 9,000ft	7,501 - 9,500ft	
LP High Altitude Conversion Kit	176795600	9,001 - 10,000ft	n/a	
LP Conversion Kit	176794300	0 - 3,000ft	0 - 4,500ft	UHCM 250- 400
LP High Altitude Conversion Kit	176794400	3,001 - 5,000ft	4,501 - 7,500ft	
LP High Altitude Conversion Kit	176794500	5,001 - 7,000ft	7,501 - 9000ft	
LP High Altitude Conversion Kit	176794600	7,001 - 9,000	n/a	
LP High Altitude Conversion Kit	176794700	9,001 - 10,000	n/a	

Natural Gas Kits

Description	Kit Part #	Altitudes		Used On Models
		US	CANADA	
NG Conversion Kit	176701644	0 - 5,000ft	0 - 7,500ft	UHRS (All Models)
NG High Altitude Conversion Kit	176795700	5,000 - 7,000ft	7,501 - 9,500ft	
NG High Altitude Conversion Kit	176795800	7,000 - 10,000ft	n/a	
NG Conversion Kit	176701645			UHCM 125 - 200
NG High Altitude Conversion Kit	176795900	4,000 - 8,000	6,501 - 7,500ft	
NG High Altitude Conversion Kit	176796000	8,000 - 10,000	n/a	
NG Conversion Kit	176794800	0 - 5,000ft	0 - 7,500ft	UHCM 250 - 400
NG High Altitude Conversion Kit	176794900	5,000 - 8,000	7,501 - 9,500ft	
NG High Altitude Conversion Kit	176795100	8,000 - 10,000	n/a	

