

Job Name/Location:

Tag #:

Date:

For:	File	Resubmit
	Approval	Other_____

PO No.:

Architect: \_\_\_\_\_ GC: \_\_\_\_\_

Engr: \_\_\_\_\_ Mech: \_\_\_\_\_

Rep: \_\_\_\_\_  
(Company) (Project Manager)



## LC248HV

Single Zone 3x3 Four-Way Ceiling Cassette

Outdoor Unit (ODU) - LUU249HV, Indoor Unit (IDU) - LCN248HV

### Performance:

#### Cooling:

Cooling Capacity (Min~Rated~Max) (Btu/h)	9,600 ~ 24,000 ~ 28,000
SEER	20
EER	12.6

SEER - Seasonal Energy Efficiency Ratio      EER - Energy Efficiency Ratio

#### Heating:

Heating Capacity (Min~Rated~Max) (Btu/h)	10,800 ~ 27,000 ~ 30,000
HSPF	10.5
Max. Heating @ Indoor 70°F DB	
Outdoor 17°F DB	26,000
Outdoor 5°F DB	23,600
Outdoor -4°F DB	20,760

HSPF - Heating Seasonal Performance Factor

### Electrical:

Power Supply (V/Hz/Ø)	208-230/60/1
MOP (A)	30
MCA (A)	20
Cooling Rated Amps (A)	15.7
Heating Rated Amps (A)	15.7
Compressor (A)	13.5
Fan Motor (IDU + ODU) (A)	0.6 + 1.6
Cooling Power Input (kW)	1.9
Heating Power Input (kW)	2.3

MOP - Maximum Overcurrent Protection      MCA - Minimum Circuit Ampacity

### Piping:

Liquid (in., O.D.)	3/8
Vapor (in., O.D.)	5/8
Additional Refrigerant (oz./ft.)	0.43
Min. / Max. Pipe Length (ft.) <sup>2</sup>	6.6 / 164
Piping Length (no add'l refriger., ft.)	24.6
Max. Elevation (ft.)	98.4

### Features:

- Inverter (Variable Speed Compressor)
- Internal Condensate Pump
- Swirl Wind
- Jet Cool
- Auto Restart
- Auto Changeover
- Ultra-quiet Turbo Fan
- Night Quiet Operation
- Optional Wi-Fi Control

### Included Accessories:

- Wireless Remote Controller - PQWRHQ0FDB

### Required Accessories:

- Grille Kit - PT-MCHWO

### Optional Accessories:

- |   |   |
|---|---|
| <input type="checkbox"/> Simple Controller - PREMT00U           | <input type="checkbox"/> ACP 5 BACnet Gateway - PACP5A000   |
| <input type="checkbox"/> Premium Controller - PREMTA000         | <input type="checkbox"/> Ventilation Kit + Flange <sup>3</sup> - PTVK410 + PTVK420                  |
| <input type="checkbox"/> MultiSITE™ CRC1 - PREMTBVC0            | <input type="checkbox"/> Flange - PTVK430   |
| <input type="checkbox"/> MultiSITE CRC1+ - PREMTBVC1            | <input type="checkbox"/> Auto Elevation Kit - PTEGMO  |
| <input type="checkbox"/> MultiSITE Comm. Mgr. - PBACNBTR0A      | <input type="checkbox"/> Wi-Fi Module - PWFMD200  |
| <input type="checkbox"/> PI-485 - PMNFP14A1                     | <input type="checkbox"/> Drain Pan Heater - PQSH1200  |
| <input type="checkbox"/> Dry Contact - PDRYCB300                | <input type="checkbox"/> Low Ambient Wind Baffle (Cooling operation to -4°F) - ZLABGP04A Requires 1 |
| <input type="checkbox"/> LonWorks® Gateway - PLNWK100           |   |
| <input type="checkbox"/> AC Smart 5 BACnet® Gateway - PACS5A000 |   |

### Operating Range:

#### Outdoor Unit:

Cooling (°F DB)	5 ~ 118
Heating (°F WB)	-4 ~ +64

#### Indoor Unit:

Cooling (°F WB)	57 ~ 77
Heating (°F DB)	59 ~ 81

### System Data:

Refrigerant Type	R410A
Refrigerant Control	EEV
Refrigerant Charge (lbs.)	4.41
IDU Sound Pressure (H/M/L) (±1 dB[A]) <sup>3</sup>	38 / 36 / 34
ODU Sound Pressure (Cooling / Heating) (±1 dB[A]) <sup>3</sup>	48 / 52
ODU Net / Shipping Weight (lbs.)	130.0 / 143.3
IDU Net / Shipping Weight (lbs.)	47.2 / 57.3
Grille Net / Shipping Weight (lbs.)	14 / 21
Heat Exchanger Coating	GoldFin™

### Fan:

ODU Type	Propeller
IDU Type	Cross Flow
Fan Speeds (Fan/Cool/Heat)	4 / 5 / 4
Quantity (ODU + IDU)	1 + 1
Motor/Drive	Brushless Digitally Controlled/Direct
ODU Air Flow Rate (CFM)	2,048
IDU Air Flow (CFM H/M/L)	600 / 530 / 459
Dehumidification (pts./hr.)	4.5

### Notes:

1. Acceptable operating voltage: 187V-253V.
2. Piping lengths are equivalent.
3. Must comply with applicable codes for fire isolation dampers.
4. Sound Pressure levels are tested in an anechoic chamber under ISO Standard 3745.
5. All communication / connection (power) cable from the outdoor unit to the indoor unit is field supplied and must be a minimum of four-conductor, 14 AWG, stranded, shielded or unshielded (if shielded, it must be grounded to the chassis of the outdoor unit only), and must comply with applicable local and national codes.
6. This unit comes with a dry helium charge.
7. This data is rated 0 ft. above sea level, with 24.6 ft. of refrigerant line and a 0 ft. level difference between outdoor and indoor units.
8. Power wiring cable size must comply with the applicable local and national code.
9. Must follow installation instructions in the applicable LG installation manual.

BACnet® is a registered trademark of ASHRAE. LonWorks® is a trademark of Echelon Corporation.



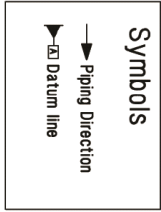
**LC248HV**  
 Single Zone 3x3 Four-Way Ceiling Cassette  
 Outdoor Unit (ODU) - LUU249HV, Indoor Unit (IDU) - LCN248HV



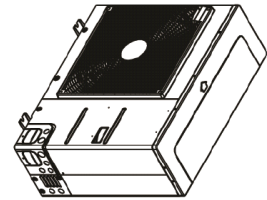
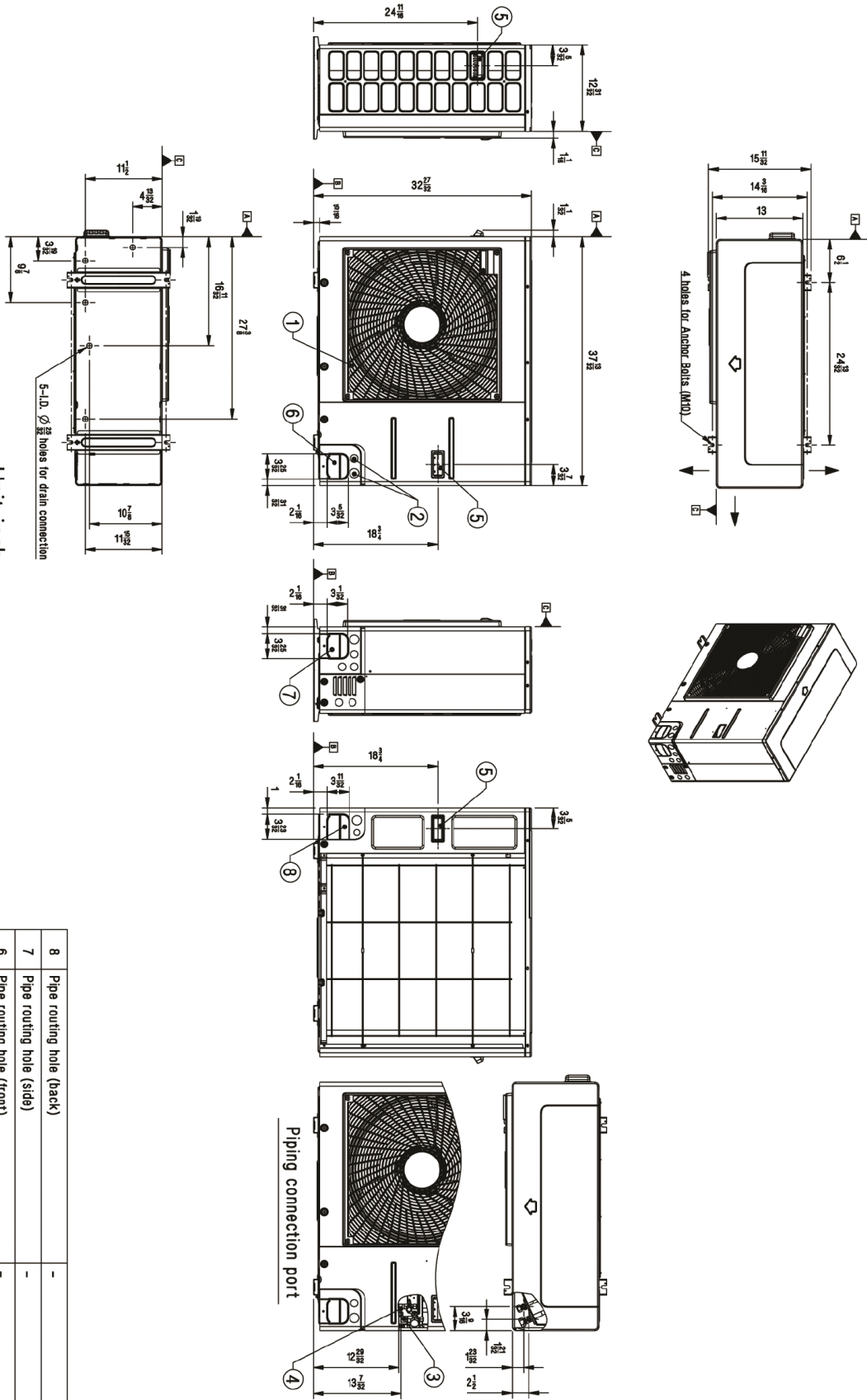
Tag No.: \_\_\_\_\_

Date: \_\_\_\_\_

PO No.: \_\_\_\_\_



Unit: inch



No.	Part Name	Description
1	Air Outlet	-
2	Power and communication cable Hole	-
3	Gas Pipe Connection	Flare joint
4	Liquid Pipe Connection	Flare joint
5	Handle	-
6	Pipe routing hole (front)	-
7	Pipe routing hole (side)	-
8	Pipe routing hole (back)	-

**LC248HV**  
 Single Zone 3x3 Four-Way Ceiling Cassette  
 Outdoor Unit (ODU) - LUU249HV, Indoor Unit (IDU) - LCN248HV



Tag No.: \_\_\_\_\_

Date: \_\_\_\_\_

PO No.: \_\_\_\_\_

