

PRINTING INSTRUCTIONS: MAKE EXACTLY 6.000 IN X 7.500 IN. WHITE BACKGROUND WITH BLACK PRINTING.

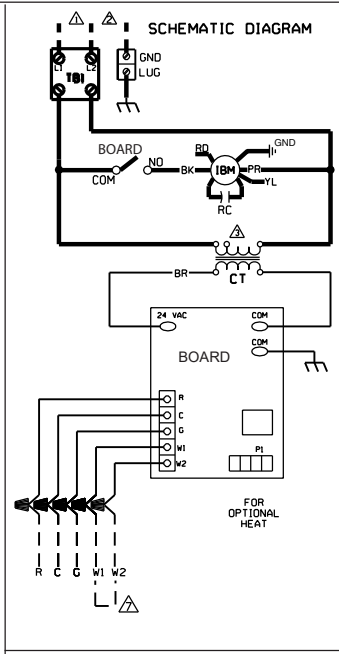
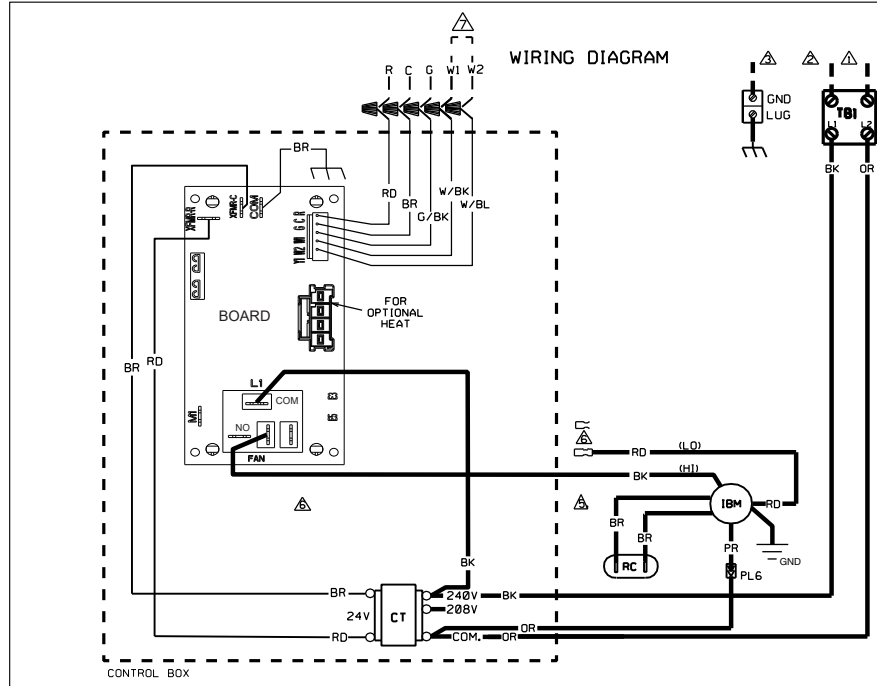
MATERIAL:ADS-4574-02, PRESSURE SENSITIVE, ADHESIVE BACKED MATERIAL.

REVISIONS

05	REVISED CONTROL BOARD FOR CLARITY.	JHB	Y-0655S074 2/22/2017
06	REVISED BTD TO BOARD, ADDED BOARD TO COMP. CODES, CORRECTED NOTES, ADDED NEW BOARD TO DIAGRAM.	JHB	Y-0655S163 10/17/2017
07	UPDATED PLUG FOR OPTIONAL HEATER ON BOARD, ADDED GROUND ON INDOOR BLOWER MOTOR, ADDED GND ON COMPONENT CODE BOX AND UPDATED DRAWING FORMAT.	VYM	108918 12/6/2022

NO REVISION TO DESIGN, MATERIAL, TOOLING, OR PROCESS IS ACCEPTABLE WITHOUT PRIOR APPROVAL FROM RHEEM THROUGH AN AUTHORIZED CHANGE NOTICE. A REVISED ENGINEERING SPECIFICATION AND A RESAMPLING OF PARTS. THE SUPPLIER IS RESPONSIBLE FOR NOTIFYING RHEEM R & D AND PURCHASING DEPARTMENTS IN WRITING OF ANY CHANGES AFFECTING PRODUCT QUALITY, PERFORMANCE, RELIABILITY, PACKAGING, DELIVERY OR WORKMANSHIP. *ANY DOCUMENTS REFERRED TO ON THIS DRAWING ARE INCLUDED IN THE SPECIFICATIONS FOR THIS COMPONENT*.

NOTE: THE DOTTED BOX NEAR THE DRAWING NUMBER REPRESENTS A .25 X .25 2D DATA MATRIX. SEE ADS-104669-01 FOR DATA MATRIX SPECS.



WIRE COLOR CODE

BK.....BLACK	G.....GREEN	PR.....PURPLE
BR.....BROWN	GY.....GRAY	R.....RED
BL.....BLUE	O.....ORANGE	W.....WHITE
	Y.....YELLOW	

- NOTES**
- △ CONNECT SUPPLY WIRING TO 208/240V, 60HZ. SINGLE PHASE.
 - △ SUPPLY WIRE MUST BE RATED AT 75° C MIN. SEE INSTRUCTIONS FOR SIZE.
 - △ FOR USE WITH COOPER CONDUCTORS ONLY.
 - △ CONTROL WIRING TO THERMOSTAT.
 - △ THE WIRING DIAGRAM ABOVE SHOWS THE HIGH CONNECTIONS.
 - △ FOR LOW SPEED BLOWER:
 - REMOVE (BK) WIRE FROM NO TERMINAL OF BOARD.
 - MOVE INSULATED CAP FROM (RD) WIRE TO (BK) WIRE.
 - ATTACH (RD) WIRE TO BOARD NO TERMINAL.
 - △ WHEN USING 13KW AND HIGHER JUMP W1 AND W2 TOGETHER FOR MAXIMUM TEMPERATURE RISE.
 - △ FOR 208V APPLICATIONS MOVE BK WIRES FROM 240V TAP TO 208V TAP ON CT. SWAP YL & PR WIRES AT PL6.

COMPONENT CODES

BOARD	BLOWER CONTROL
CB	CIRCUIT BREAKER
CT	CONTROL TRANSFORMER
GND	GROUND
IBM	INDOOR BLOWER MOTOR
OPT	OPTIONAL
PL	POLARIZED PLUG
RC	RUN CAPACITOR

- WIRING INFORMATION**
- LINE VOLTAGE
 -FACTORY STANDARD _____
 -FACTORY OPTION - - - - -
 -FIELD INSTALLED - - - - -
- LOW VOLTAGE
 -FACTORY STANDARD _____
 -FACTORY OPTION - - - - -
 -FIELD INSTALLED - - - - -
- REPLACEMENT WIRE
 -MUST BE THE SAME SIZE AND TYPE OF INSULATION AS ORIGINAL (105C. MIN.)
- WARNING
 -CABINET MUST BE PERMANENTLY GROUNDED AND CONFORM TO I.E.C., N.E.C., C.E.C., NATIONAL WIRING REGULATIONS, AND LOCAL CODE AS APPLICABLE.

ELECTRICAL WIRING DIAGRAM

**ELECTRIC AIR HANDLER
PSC MOTOR
208/240 VOLT**

DR. BY **JHB** DWG. NO. **90-102702-01** REV. **07**

- WIRING INFORMATION**
- LINE VOLTAGE
 -FACTORY STANDARD _____
 -FACTORY OPTION - - - - -
 -FIELD INSTALLED - - - - -
- LOW VOLTAGE
 -FACTORY STANDARD _____
 -FACTORY OPTION - - - - -
 -FIELD INSTALLED - - - - -
- REPLACEMENT WIRE
 -MUST BE THE SAME SIZE AND TYPE OF INSULATION AS ORIGINAL (105C. MIN.)
- WARNING
 -CABINET MUST BE PERMANENTLY GROUNDED AND CONFORM TO I.E.C., N.E.C., C.E.C., NATIONAL WIRING REGULATIONS, AND LOCAL CODE AS APPLICABLE.

- NOTES**
- △ CONNECT SUPPLY WIRING TO 208/240V, 60HZ. SINGLE PHASE.
 - △ SUPPLY WIRE MUST BE RATED AT 75° C MIN. SEE INSTRUCTIONS FOR SIZE.
 - △ FOR USE WITH COOPER CONDUCTORS ONLY.
 - △ CONTROL WIRING TO THERMOSTAT.
 - △ THE WIRING DIAGRAM ABOVE SHOWS THE HIGH CONNECTIONS.
 - △ FOR LOW SPEED BLOWER:
 - REMOVE (BK) WIRE FROM NO TERMINAL OF BOARD.
 - MOVE INSULATED CAP FROM (RD) WIRE TO (BK) WIRE.
 - ATTACH (RD) WIRE TO BOARD NO TERMINAL.
 - △ WHEN USING 13KW AND HIGHER JUMP W1 AND W2 TOGETHER FOR MAXIMUM TEMPERATURE RISE.
 - △ FOR 208V APPLICATIONS MOVE BK WIRES FROM 240V TAP TO 208V TAP ON CT. SWAP YL & PR WIRES AT PL6.

COMPONENT CODES

BOARD	BLOWER CONTROL
CB	CIRCUIT BREAKER
CT	CONTROL TRANSFORMER
GND	GROUND
IBM	INDOOR BLOWER MOTOR
OPT	OPTIONAL
PL	POLARIZED PLUG
RC	RUN CAPACITOR

WIRE COLOR CODE

BK.....BLACK	G.....GREEN	PR.....PURPLE
BR.....BROWN	GY.....GRAY	R.....RED
BL.....BLUE	O.....ORANGE	W.....WHITE
	Y.....YELLOW	

ELECTRICAL WIRING DIAGRAM

**ELECTRIC AIR HANDLER
PSC MOTOR
208/240 VOLT**

APPROVED:	CHECKED:	ORIGINAL RELEASE NO.:
MODELED BY: JHB	DATE: 6/26/2007	H-1005S130
PART NO.:	90-102702-01	REV: 07